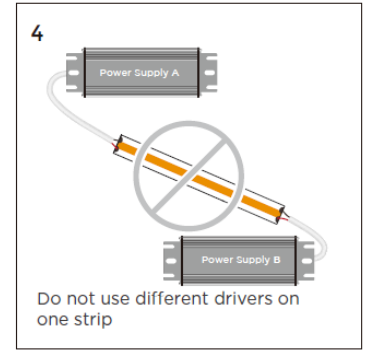
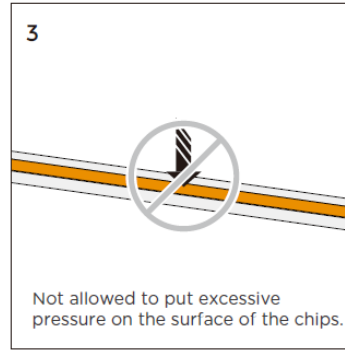
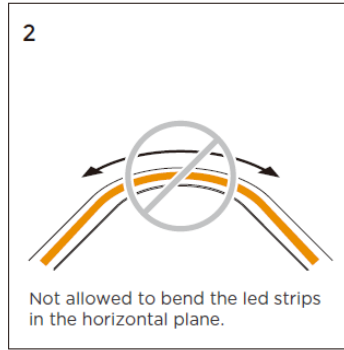
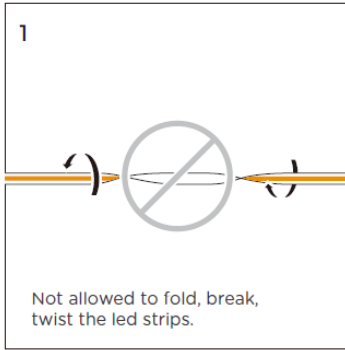
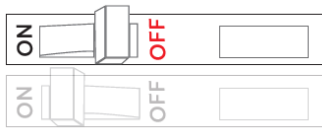


APPLICATION NOTE:



Switch off the power switch before installation:



Safety warning

Installation must comply with national standards and local electrical codes.

This product must be installed and maintained by a person with a qualified electrician's licence.

Installation may only be carried out using a Class 2 DC constant voltage driver.

The LED light strip connected to the driver must comply with the rated output power, do not exceed the specified output power.

Use connection cables with a minimum temperature of 80°C and certified for external connection to electrical equipment.

Improper electrical installation can cause the cables to overheat and cause fires; therefore, use appropriate wiring between the driver, the device and the controller.

Use appropriate wiring between the driver, the device and the controller, and choose cables with voltage and current ratings.

This product is not vulcanisation-proof and damage caused by vulcanisation will not be compensated as a material defect. It is the responsibility of the user to provide adequate protection against vulcanisation damaging components (IP20/IP62/IP65 included).

Ambient Temperature: - 2 0 °C ~ 50 °C.

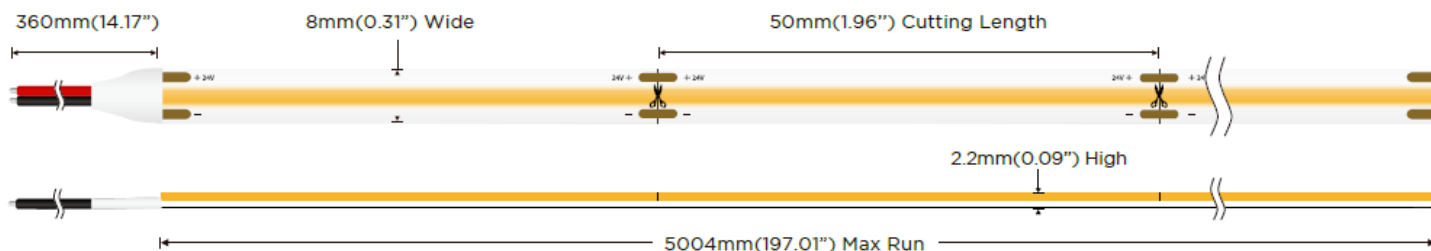
Do not install the LED strip in environments that are too hot (e.g. near heat-generating equipment) or that do not dissipate heat well (e.g. in enclosed and confined spaces).

Do not use the product in environments with high levels of sulphur, chlorine, bromine or volatile organic compounds VOC, as this may reduce the product's lifetime.

INSTALLATION:

Check that all components (LED strip, drivers, controllers, amplifiers and accessories) are compatible before installation;

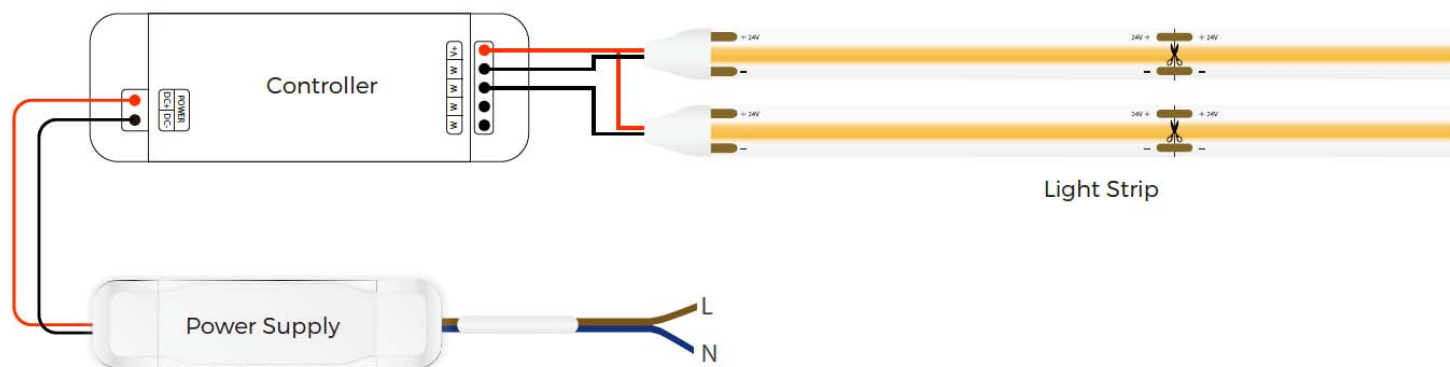
Configure and test the LED strip prior to installation to ensure all components function correctly.



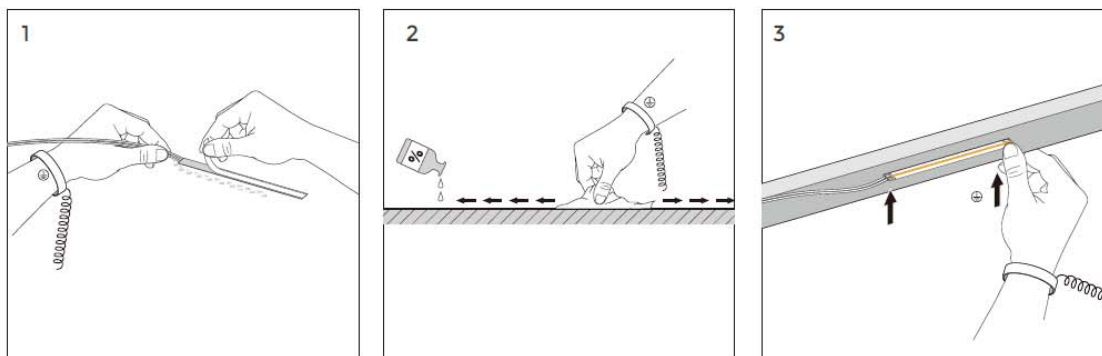
Quick checklist for selecting a ballast for a light strip:

	5W	10W	15W	20W	30W	50W	75W	100W	150W	200W	250W	350W
DC	12W	24W	24W	36W	50W	75W	100W	150W	200W	300W	350W	500W
12V	0.5A	2A	2A	3A	4.2A	6.25A	8.3A	12.5A	16.6A	25A	29A	41A
DC	12W	24W	24W	36W	50W	75W	100W	150W	200W	300W	350W	500W
24V	0.25A	1A	1A	1.5A	2.1A	3.1A	4.2A	6.25A	8.3A	12.5A	14.5A	20.8A

CONNECTION DIAGRAM:

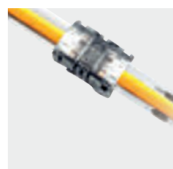


INSTALLATION DIAGRAM:



Clean the environment part to be attached with a cloth, as shown in Figure 1, and then tear off the 3M tape on the back of the light belt, and finally stick the light belt on the clean place.

Connector | Connettore strip-strip o cavo-strip Cob 8mm



TR C-W400003
(cables not included)

connector: 2 poles
protection: IP20

suitable for: Ribbon Cob