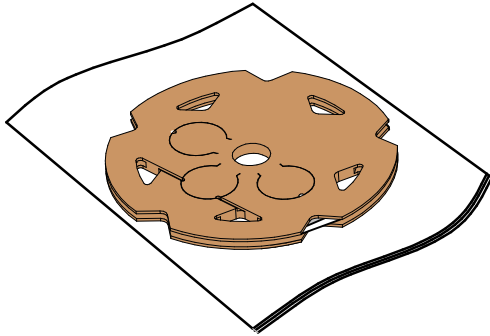


Code	Length	Type
C00463WHADI	1m	2200K
C00463WHMDI	1m	2700K
C00463WHWDI	1m	3000K
C00463WHTDI	1m	3500K
C00463WHNDI	1m	4000K

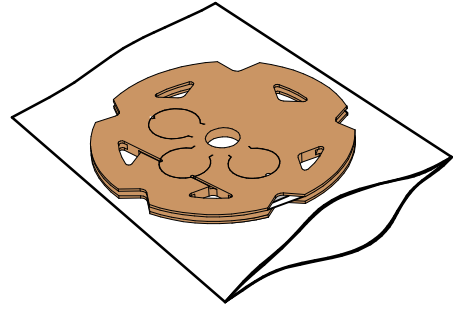
Code	Length	Type
C00464WHADI	5m	2200K
C00464WHMDI	5m	2700K
C00464WHWDI	5m	3000K
C00464WHTDI	5m	3500K
C00464WHNDI	5m	4000K

Code	Length	Type
C00465WHADI	10m	2200K
C00465WHMDI	10m	2700K
C00465WHWDI	10m	3000K
C00465WHTDI	10m	3500K
C00465WHNDI	10m	4000K

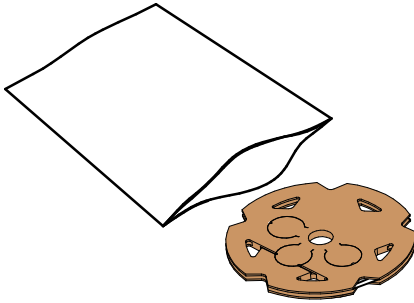
1



2



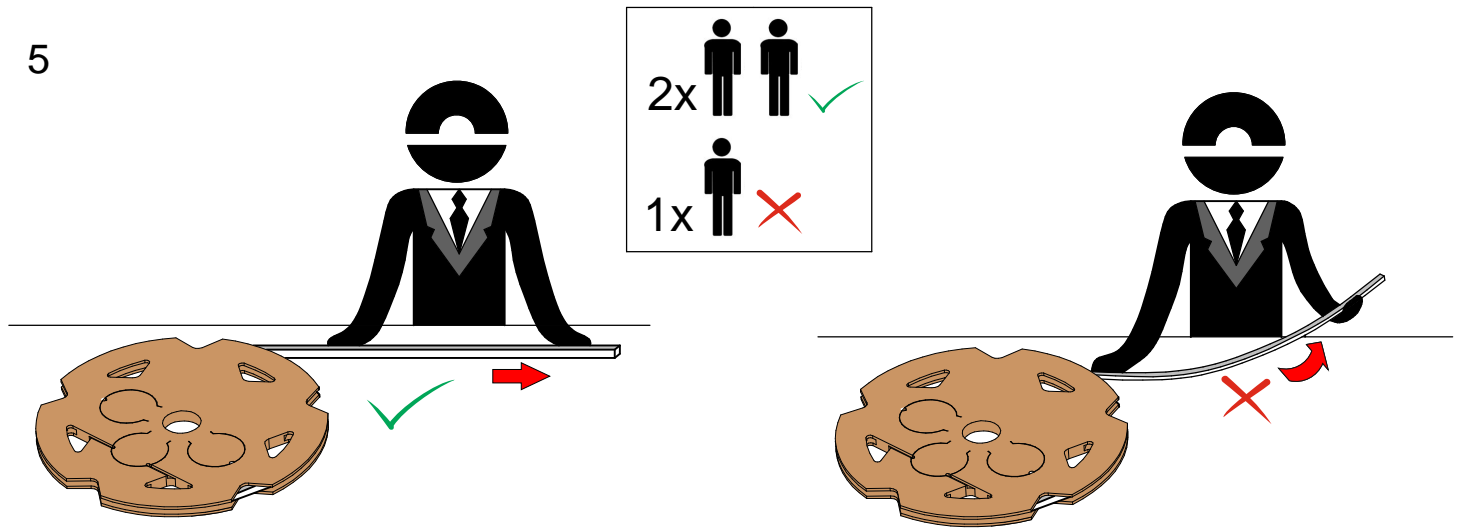
3



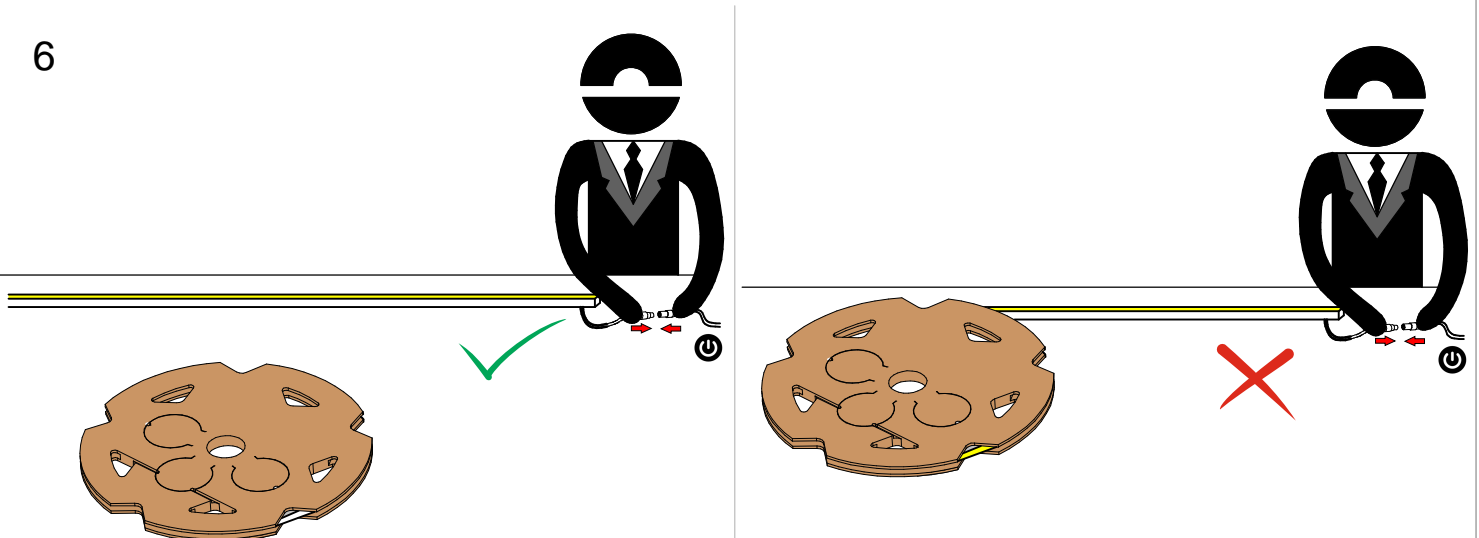
4

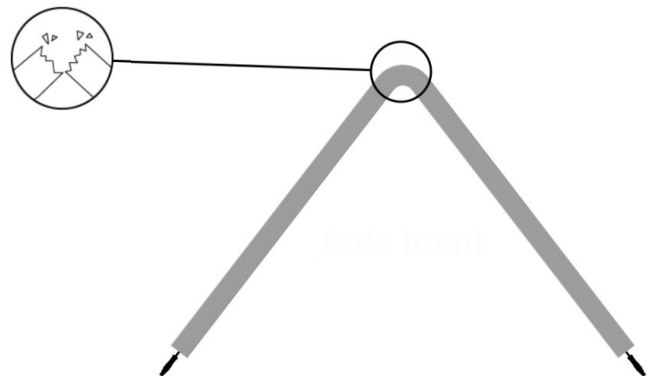
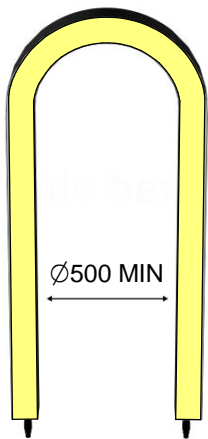
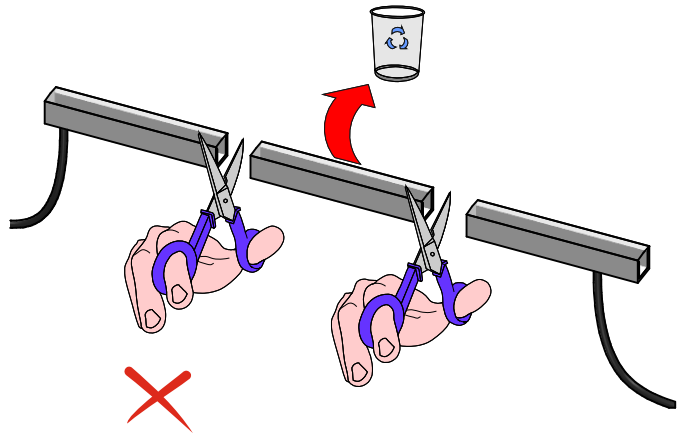
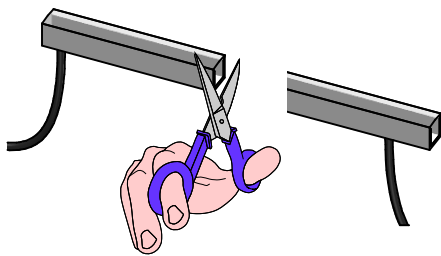
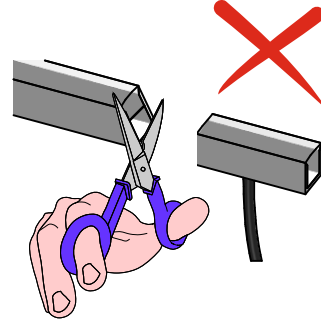
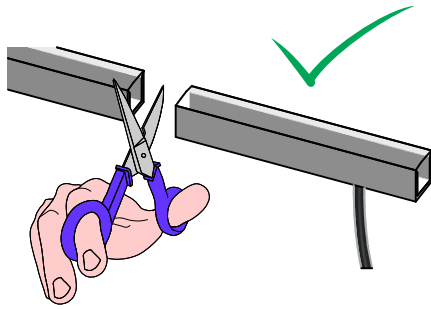


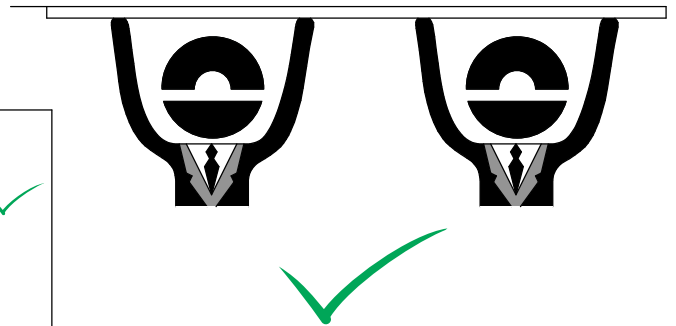
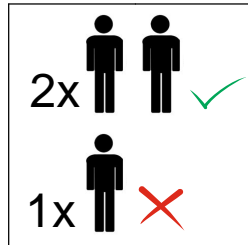
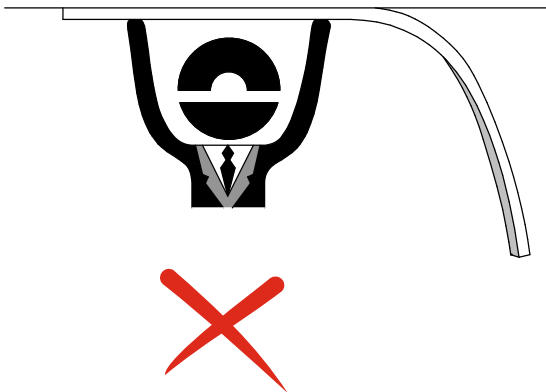
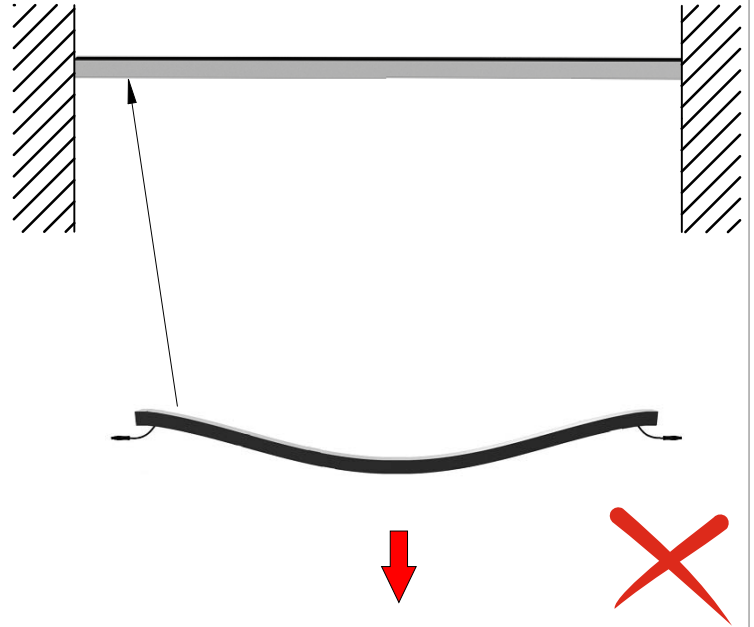
5



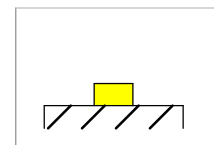
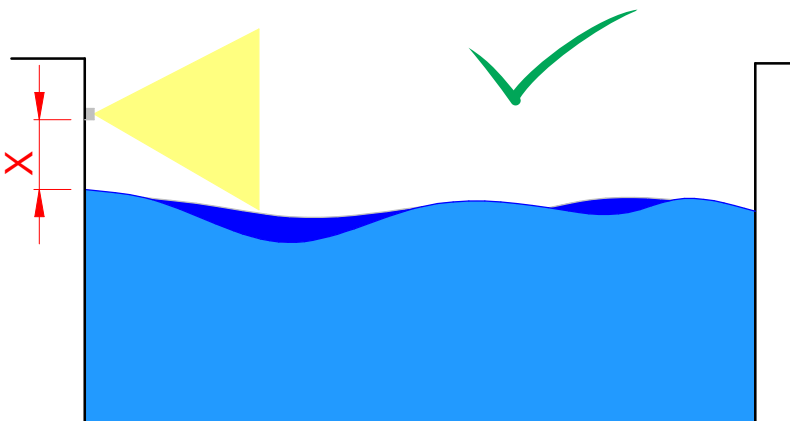
6







$X > 500 \text{ mm}$

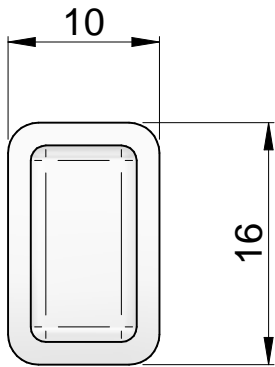
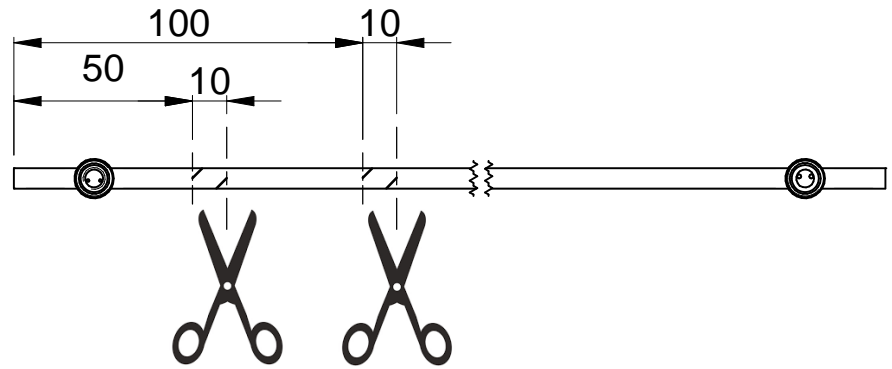
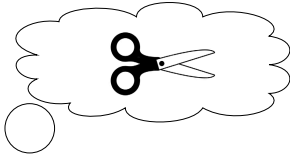


- Garantire il drenaggio dell'acqua per installazioni a pavimento

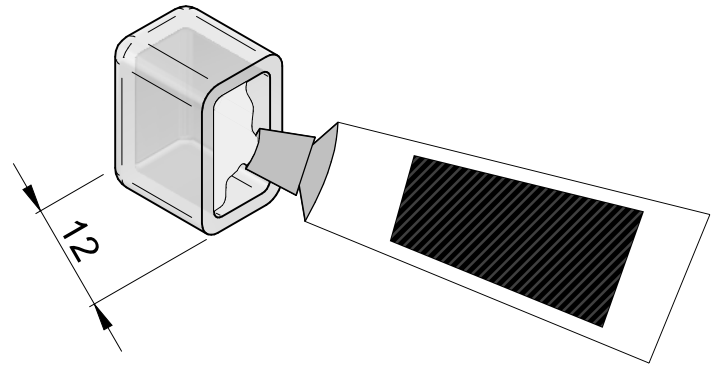
-Ensuring water drainage for floor installations

-Sicherstellung des Wasserabflusses für Bodeninstallationen

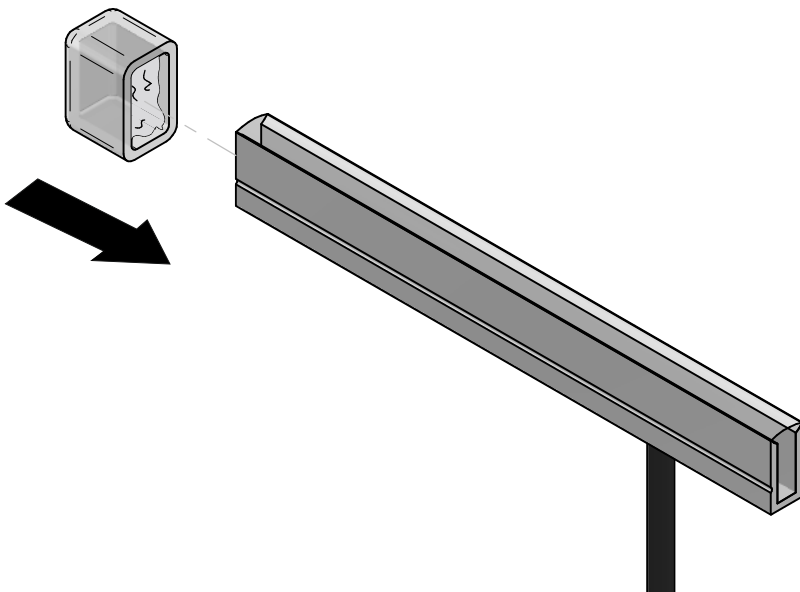
-Assurer l'évacuation de l'eau pour les installations au sol



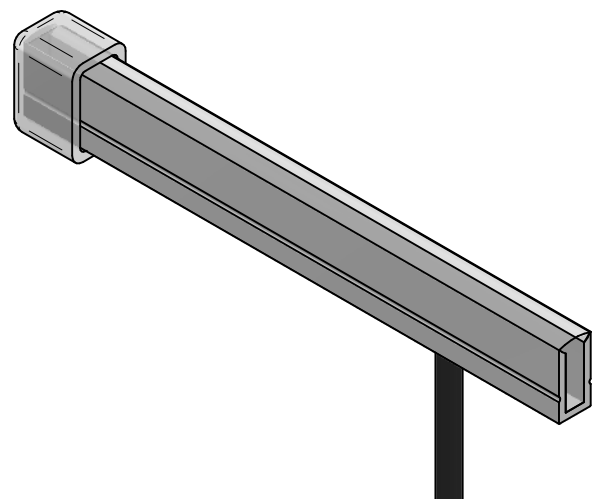
1



2



3

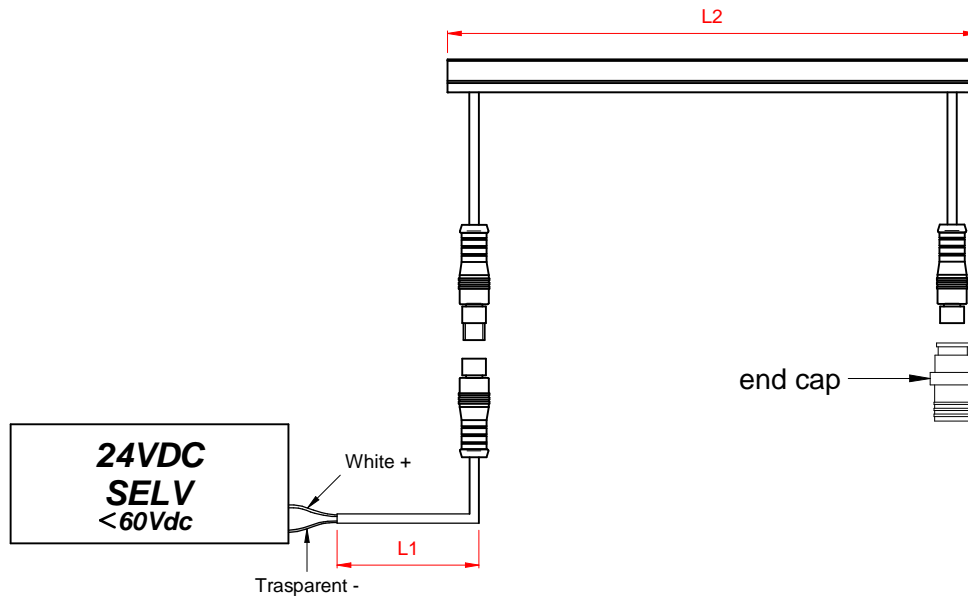


Single color

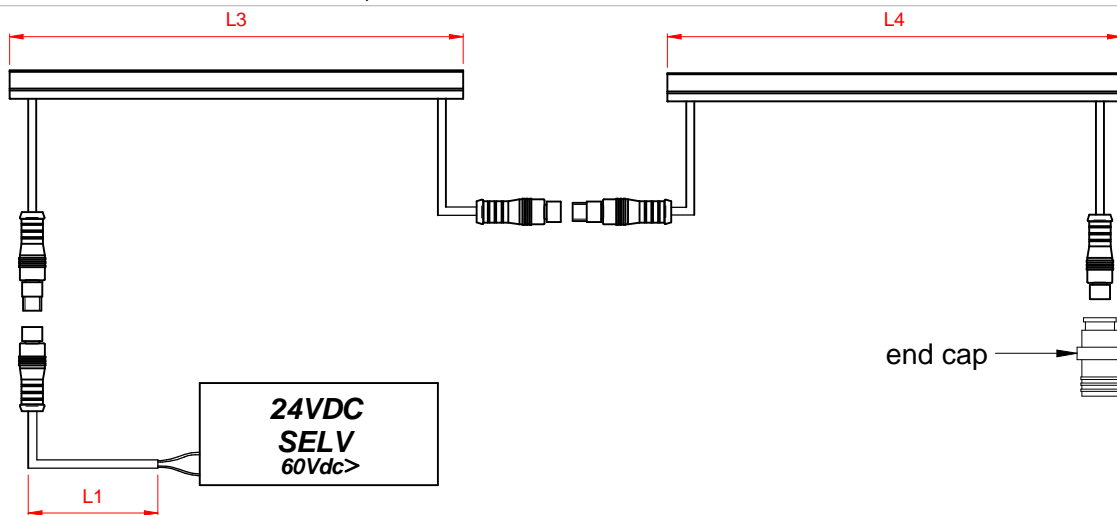
	Xmm	L1 max	L2 max
	0,75	20m	10m
	1,5	30m	10m
	2,5	30m	10m

$L2 = L3 + L4$

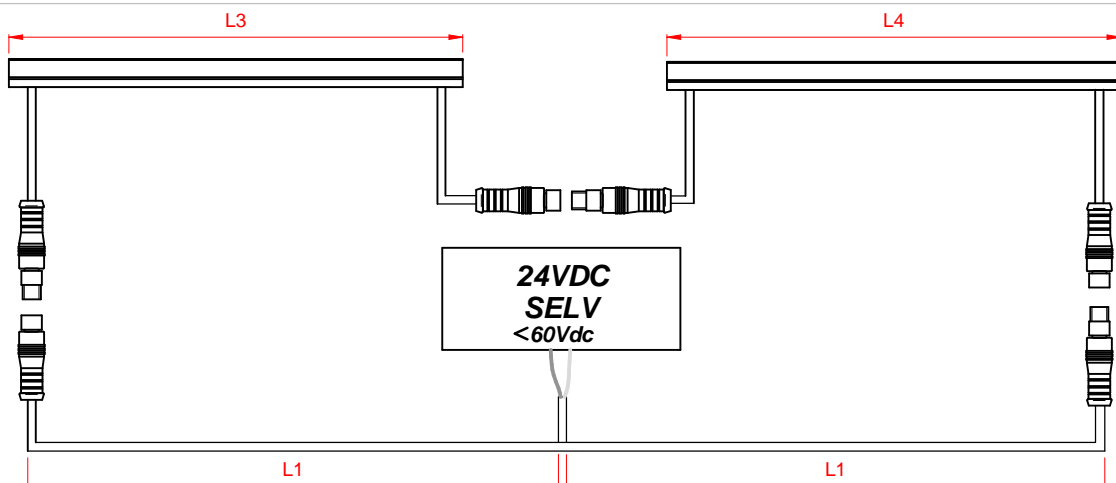
A



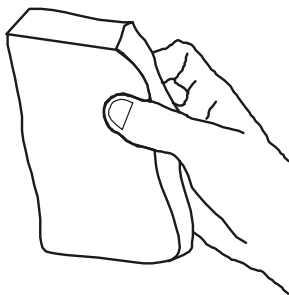
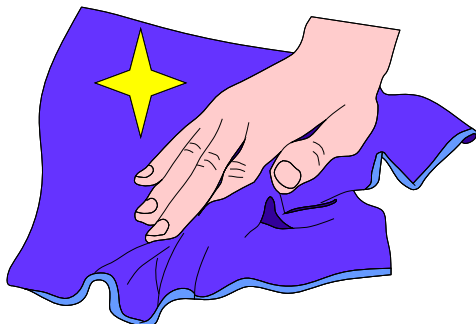
B



C



ISTRUZIONI PER IL LAVAGGIO DELL'APPARECCHIO D'ILLUMINAZIONE
LUMINAIRE CARE INSTRUCTIONS
ISTRUCCIONES PARA LIMPIAR LA LUMINARA
INSTRUCTIONS POUR LE LAVAGE DE L'APPAREIL D'ECLAIRAGE
ANLEITUNG ZUR REINIGUNG DES BELEUCHTUNGSGERATS



IT - ATTENZIONE!!!

Lavare la superficie del diffusore luce con panno umido, utilizzando solo acqua e sapone neutro.

EN - WARNING!!!

Wipe clean with a cloth dampened in water with neutral detergent.

ES - ATENCION!!!

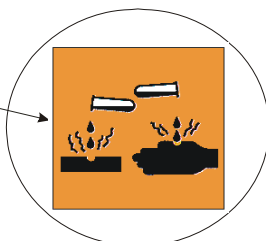
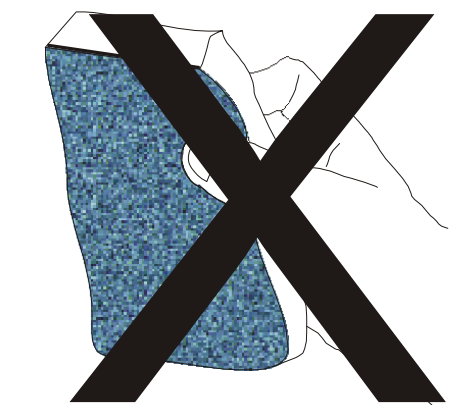
Limpie la superficie del difusor con un pano humedecido con agua y jabon neutro.

FR - ATTENTION!!!

Laver la surface du diffuseur de lumiere a l'aide d'un chiffon humide et en utilisant seulement de l'eau et du savon neutre.

DE - ACHTUNG!!!

Die oberfläche vom lampenschirm mit einem feuchten lappen reinigen. De lappen mit wasser und neutralseife befeuchten.



IT - ATTENZIONE!!!

Non utilizzare panni abrasivi e/o solventi.

EN - WARNING!!!

Avoiding the use of chemical solvents and/or abrasive cloths.

ES - ATENCION!!!

No utilizar panos abrasivos y solventes.

FR - ATTENTION!!!

Ne pas utiliser de chiffons abrasifs ou de dissolvants.

DE - ACHTUNG!!!

Abschleifende tuche und/oder losungsmittel nicht benutzen.