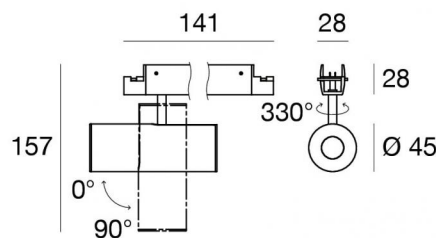




Systèmes - Éléments linéaires  
1 topLED 10 W DC 24 V | CRI 90

83957W45



| Données techniques                                       |                               |
|--|-------------------------------|
| Designer   | Linea Light                   |
| Année de réalisation                                     | 2020                          |
| Typologie  | Systèmes - Éléments linéaires |
| Position d'installation                                  | Câble                         |
| Environnement d'installation                             | Intérieur                     |
| Source lumineuse   | LED                           |
| Circuit structure  | topLED                        |
| Optique  | Medium Wide Flood             |
| Light emission direction                                 | downward                      |
| Puissance nominale                                       | 10 W DC                       |
| Flux lumineux (source)                                   | 1068 lm                       |
| Plage de tension d'entrée                                | 24 V                          |
| Frequency  | 50-60 Hz                      |
| Température de couleur / Tone                            | 3000 K                        |
| Indice de rendu chromatique                              | 90 Ra                         |
| C.C. / V.C.  | CV                            |
| Classe d'isolation                                       | 3                             |
| IP   | IP40                          |
| Essai au fil incandescent                                | 650°                          |
| Montage direct sur des surfaces normalement inflammables | Oui                           |
| CE   | Oui                           |
| Driver inclus  | Non                           |
| C.V. - C.C. Converter                                    | Convertisseur 24 V inclus     |
| Article à intensité variable                             | DALI - 1-10V - PUSH DIM       |
| Orientable   | Orientable                    |
| angle total (plan vertical)                              | 330 °                         |
| Basculement  | Oui                           |
| angle total (plan horizontal)                            | 90 °                          |
| Piétinable   | Non                           |
| Carrossable  | Non                           |
| Câble inclus   | Non                           |
| Revêtement en résine                                     | Non                           |
| Type d'émission lumineuse                                | Émission simple               |
| Poids net  | 0455 Kg                       |
| Protection contre les décharges électrostatiques         | Non                           |
| Protection contre les surtensions                        | Non                           |
| Technologie optique                                      | Honey comb                    |

## Finition corps

|             |            |
|-------------|------------|
| Matériau    | Aluminium  |
| Fabrication | Vernissage |

## Finition diffuseur

|          |             |
|----------|-------------|
| Matériau | PMMA        |
| Couleur  | transparent |

## Finition monture

|             |            |
|-------------|------------|
| Matériau    | Aluminium  |
| Fabrication | Vernissage |

## Électronique



81416  
On/Off Driver 220-240V AC 120 W (1 - 12 art.)



81417  
On/Off Driver 220-240V AC 180 W (1 - 18 art.)



83042  
1-10V - Push and Simply Dim - DALI-2 Controller (1 - 28 art.)



Systèmes - Éléments linéaires | 1 topLED 10 W DC 24 V | CRI 90  
83957W45

Single emission systems or lines for indoor application. The warm white LED light source with a medium wide flood light distribution is composed of 1 powered LEDs with CCT of 3000 K and a CRI 90; the source luminous flux is 1068 lm, with a 106.8 lm/W nominal luminous efficacy.

The device body is made of aluminium and features a 5g 9005 black finish, processed by means of coating; the diffuser is made of pmma; the mounting frame is made of aluminium, with a 5g 9005 black finish, processed by means of coating. The ingress protection degree is IP40; the total weight is of 0455 kg.

The total absorbed power is 10 W.

The device features protection class III and can be cable-mounted.

Compliant with the EN 60598-1 standard and its specific provisions.

### Classe d'efficacité énergétique

Ce produit contient une source lumineuse de classe d'efficacité énergétique F.

### Caractéristiques Techniques de l'éclairage

|  |                |
|--|----------------|
| Light Output Ratio (LOR)                   | 62 %           |
| Flux lumineux (source)                     | 1068 lm        |
| Flux lumineux du luminaire                 | 663 lm         |
| Consumption                                | 10 W           |
| Efficacité lumineuse du luminaire          | 66 lm/W        |
| Température de couleur                     | 3000 K         |
| Standards de Concordance de Couleur        | 3 Step MacAdam |
| Indice de rendu chromatique                | 90 Ra          |
| Température de jonction (appareil)         | 80             |
| Température standard de l'environnement de | -20 / +50°C    |

### LED Life / Failure Ratio

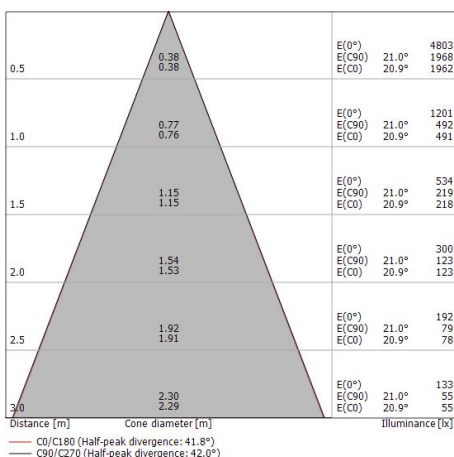
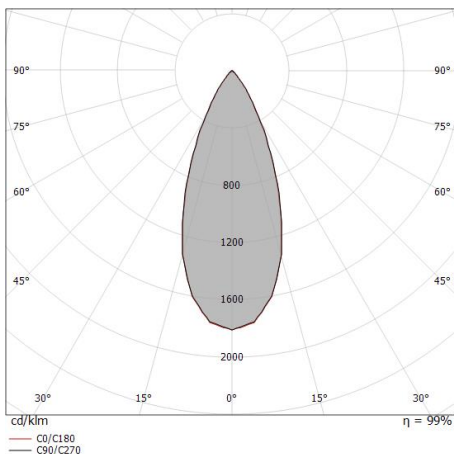
L80 B20 C0 80000h (at Tj 85 Ta 25 )

### UGR

|                   |          |
|-------------------|----------|
| UGR axial         | 22       |
| UGR transversal   | 21.9     |
| X=4H   Y=8H       | S=0.25H  |
| Reflection factor | 70/50/20 |

### OPTICAL

|                             |             |
|-----------------------------|-------------|
| Optique C0/C180             | 42°         |
| Light distribution simmetry | Symmetrical |

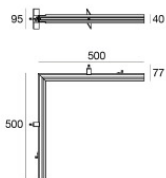




|  |  |   |                                     |
|--|--|---|-------------------------------------|
|  |  | <p>Outil - Kit de coupe/dénudage de câbles</p>  | <p><b>Code</b><br/><u>81427</u></p> |
|  |  | <p>Câble<br/>Type câble power cable; Longueur 1000 mm; isolation doppio; section 1.5 mm<sup>2</sup>; serre-câble: non; couleurs: noir - rouge.</p>  | <p><b>Code</b><br/><u>84016</u></p> |
|  |  | <p>Câble<br/>Type câble power cable; Longueur 5000 mm; isolation doppio; section 1.5 mm<sup>2</sup>; serre-câble: non; couleurs: noir - rouge.</p>  | <p><b>Code</b><br/><u>81410</u></p> |
|  |  | <p>Câble<br/>Type câble power cable; Longueur 10000 mm; isolation doppio; section 1.5 mm<sup>2</sup>; serre-câble: non; couleurs: noir - rouge.</p> | <p><b>Code</b><br/><u>81411</u></p> |
|  |  | <p>Profil - L. 1000mm<br/>Matériau:Aluminium, fabrication :Vernissage.</p>  | <p><b>Code</b><br/><u>84012</u></p> |
|  |  | <p>Profil - L. 2000mm<br/>Matériau:Aluminium, fabrication :Vernissage.</p>  | <p><b>Code</b><br/><u>84013</u></p> |
|  |  | <p>Profil - L. 3000mm<br/>Matériau:Aluminium, fabrication :Vernissage.</p>  | <p><b>Code</b><br/><u>84014</u></p> |
|  |  | <p>Profil - Coin intégré<br/>Matériau:Aluminium, fabrication :Vernissage.</p>   | <p><b>Code</b><br/><u>84015</u></p> |

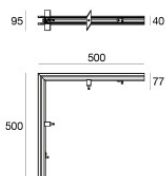
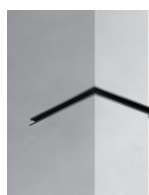


Ink system\_SP | Lines | Accessories  
**83957W45**



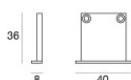
Profil - Coin intégré - IN  
Matériau:Aluminium, fabrication :Vernissage.

**Code**  
84073



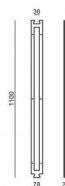
Profil - Coin intégré - OUT  
Matériau:Aluminium, fabrication :Vernissage.

**Code**  
84074



Bouchon - 2X  
Matériau:PC, couleur:noir.

**Code**  
83153



Gabarit

**Code**  
83186