



Uplights | 4 x powerLED 9 W DC 24 V | CRI 80 83643M18

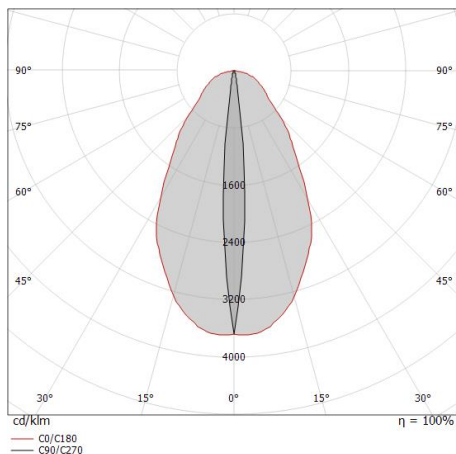
Single emission uplights for outdoor application. The super warm white LED light source with a elliptic narrow spot (wall grazing) light distribution is composed of 4 powerleds LEDs with CCT of 2700 K and a CRI 80; the source luminous flux is 854 lm, with a 94.9 lm/W nominal luminous efficacy.

The device body is made of die-cast aluminium en ab - 46100 and features a black finish, processed by means of open pore anodizing + powder coating; the diffuser is made of extra clear glass - tempered with a silk-screening treatment. The ingress protection degree is IP68; the total weight is of 0.5 kg.

The total absorbed power is 9 W. The power supply cable is included and features a 1 m length.

The device features protection class III and can be floor-mounted with an outer casing, code 99856(for concrete or masonry).

Compliant with the EN 60598-1 standard and its specific provisions.



Distance [m]	Cone diameter [m]	illuminance [lx]
0.5	0.08 0.62	E(0°) 3209 E(C90) 1616 E(C0) 987
1.0	0.16 1.24	E(0°) 802 E(C90) 404 E(C0) 247
1.5	0.24 1.87	E(0°) 357 E(C90) 180 E(C0) 110
2.0	0.32 2.49	E(0°) 201 E(C90) 101 E(C0) 62
2.5	0.40 3.11	E(0°) 128 E(C90) 65 E(C0) 39
3.0	0.48 3.73	E(0°) 89 E(C90) 45 E(C0) 27

— C0/C180 (Half-peak divergence: 63.8°)
— C90/C270 (Half-peak divergence: 9.2°)

Classe d'efficacité énergétique

Ce produit contient une source lumineuse de classe d'efficacité énergétique F.

Caractéristiques Techniques de l'éclairage

Light Output Ratio (LOR)	25 %
Flux lumineux (source)	854 lm
Flux lumineux du luminaire	218 lm
Consumption	9 W
Efficacité lumineuse du luminaire	24 lm/W
Température de couleur	2700 K
Standards de Concordance de Couleur	3 Step MacAdam
Indice de rendu chromatique	80 Ra
Température standard de l'environnement de	-20 / +50°C
Température typique sur le verre	40°C

LED Life / Failure Ratio

L70 B10 C0 60500h

UGR

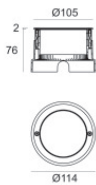
UGR axial	12
UGR transversal	28.8
X=4H Y=8H	S=0.25H
Reflection factor	70/50/20

OPTICAL

Optique C90/C270	9°
Optique C0/C180	64°
Light distribution simmetry	Symmetrical 2 assis



Orma_AB | Effects | Accessories
83643M18



Boîtier d'encastrement

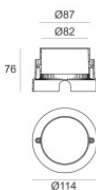
position d'installation: sol; type installation: maçonnerie L=114mm, H=78mm, D=114mm.

Matériau:Acier AISI 316, couleur:acier.

Finish

Code

99563



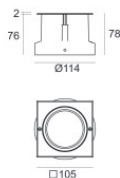
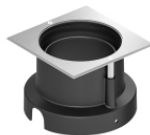
Boîtier d'encastrement

position d'installation: sol; type installation: maçonnerie L=114mm, H=76mm, D=114mm.

Matériau:Plastique ABS, couleur:noir.

Code

99651



Boîtier d'encastrement

position d'installation: sol; type installation: maçonnerie L=105mm, H=76mm, D=105mm.

Matériau:Plastique ABS, couleur:noir.

Code

99856