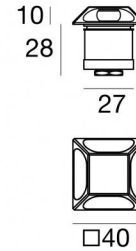


# Alcor\_Q4 316



Uplights | 1 x powerLED 1.5 W DC 500 mA | CRI 80  
83612W18






## Données techniques

|  |  |
|--|--|
| Typologie  | Semi-encastré - -                      |
| Position d'installation                                  | Sol                                    |
| Environnement d'installation                             | Extérieur                              |
| Source lumineuse   | LED                                    |
| Circuit structure  | powerLED                               |
| Optique  | Radial<br>Multidirectional<br>emission |
| Light emission direction                                 | external                               |
| Puissance nominale                                       | 1.5 W DC                               |
| Flux lumineux (source)                                   | 213 lm                                 |
| Plage de tension d'entrée                                | 500mA                                  |
| Température de couleur / Tone                            | 3000 K                                 |
| Indice de rendu chromatique                              | 80 Ra                                  |
| C.C. / V.C.  | CC                                     |
| Classe d'isolation                                       | 3                                      |
| IP   | IP67                                   |
| IK   | IK10                                   |
| Essai au fil incandescent                                | 850°                                   |
| Montage direct sur des surfaces normalement inflammables | Oui                                    |
| CE   | Oui                                    |
| Driver inclus  | Non                                    |
| Article à intensité variable                             | DALI - 1-10V                           |
| Orientable   | Non                                    |
| Basculement  | Non                                    |
| Piétinable   | Oui                                    |
| Carrossable  | Non                                    |
| Câble inclus   | Oui                                    |
| Longueur du câble  | 1 m                                    |
| Revêtement en résine                                     | Oui                                    |
| Type d'émission lumineuse                                | Émission multiple                      |
| Poids net  | 0.158 Kg                               |
| Protection contre les décharges électrostatiques         | Non                                    |
| Protection contre les surtensions                        | Non                                    |
| Caractéristiques technologiques du produit               | TVS                                    |

## Finition corps

|             |             |
|-------------|-------------|
| Matériau    | Laiton OT58 |
| Couleur     | Laiton brut |
| Fabrication | Sablage     |

## Électronique

|  |   |
|--|---|
|    | 89423<br>On/Off Driver 198~264V AC / 180~275V DC (1 - 3 art.)     |
|   | 89422<br>On/Off Driver 198~264V AC / 180~275V DC (1 - 2 art.)     |
|  | C-E200007<br>On/Off Driver 198~264V AC / 180~275V DC (1 - 6 art.) |

## Cables Electrification

|                 |    |
|-----------------|----|
| Cable connector | No |
|-----------------|----|



Uplights | 1 x powerLED 1.5 W DC 500 mA | CRI 80  
**83612W18**

### Classe d'efficacité énergétique

Ce produit contient une source lumineuse de classe d'efficacité énergétique D.

### Caractéristiques Techniques de l'éclairage

|   |             |
|---|-------------|
| Light Output Ratio (LOR)                          | 39 %        |
| Flux lumineux (source)                            | 213 lm      |
| Flux lumineux du luminaire                        | 85 lm       |
| Consumption                                       | 1,5 W       |
| Efficacité lumineuse du luminaire                 | 85 lm/W     |
| Température de couleur                            | 3000 K      |
| Standards de Concordance de Couleur               | 1.5 Step    |
| Indice de rendu chromatique                       | 80 Ra       |
| <b>Température standard de l'environnement de</b> |             |
|   | -20 / +50°C |
| <b>Température typique sur le verre</b>           |             |
|   | 40°C        |

### LED Life / Failure Ratio

L70 B10 C0 361980h (at Tj 60 Ta 25 )

### OPTICAL

|                             |             |
|-----------------------------|-------------|
| Optique C0/C180             | 180°        |
| Light distribution simmetry | Symmetrical |

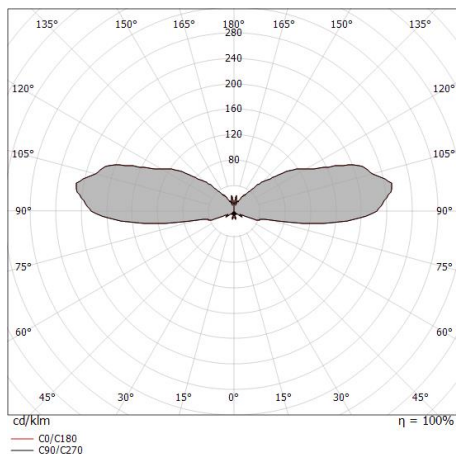
Multiple emission uplights for outdoor application. The warm white LED light source with a radial multidirectional emission light distribution is composed of 1 powerled LEDs with CCT of 3000 K and a CRI 80; the source luminous flux is 213 lm, with a 142.0 lm/W nominal luminous efficacy.

The device body is made of ot58 brass and features a raw brass finish, processed by means of sandblasting. The ingress protection degree is IP67; the total weight is of 0.158 kg. The power supply driver is not provided and is to be ordered separately.

The total absorbed power is 1.5 W. The power supply cable is included and features a 1 m length.

The device features protection class III and can be floor-mounted with an outer casing, code 84918(for concrete or masonry).

Compliant with the EN 60598-1 standard and its specific provisions.





Alcor\_Q4 316 | Step Lights | Accessories  
**83612W18**



Boîtier d'encastrement

position d'installation: sol; type installation: maçonnerie L=87mm, H=60mm, D=60mm.

Matériau:Plastique ABS, couleur:noir.

**Code**

84918