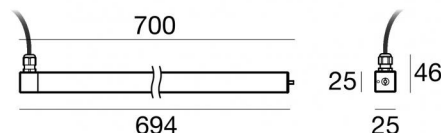
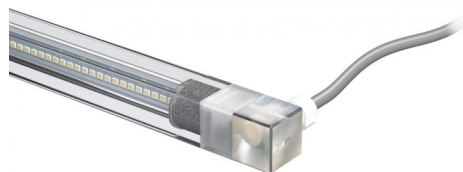




Immersion | 114 topLED 11 W DC 12 V | CRI 80
82650C36



Données techniques	
Typologie	Surface
Position d'installation	Mur
Environnement d'installation	Extérieur
Source lumineuse	LED
Circuit structure	topLED
Optique	General Lighting
Light emission direction	frontal
Puissance nominale	11 W DC
Flux lumineux (source)	1538 lm
Température de couleur / Tone	6000 K
Indice de rendu chromatique	80 Ra
C.C. / V.C.	CV
Classe d'isolation	3
IP	IP68
Profondeur d'installation maximale	25 mm
IK	IK08
Essai au fil incandescent	850°
Montage direct sur des surfaces normalement inflammables	Oui
CE	Oui
Driver inclus	Non
Article à intensité variable	DALI - 1-10V
Orientable	Orientable
angle total (plan vertical)	360 °
Basculement	Non
Piétinable	Non
Carrossable	Non
Câble inclus	Oui
Longueur du câble	5 m
Revêtement en résine	Oui
Type d'émission lumineuse	Émission simple
Poids net	0.40 Kg
Protection contre les décharges électrostatiques	Non
Protection contre les surtensions	Non
Caractéristiques technologiques du produit	Acquastop - UV Resistant





Finition corps

Matériau	Acier AISI 316L
Couleur	acier

Finition diffuseur

Matériau	Polycarbonate résistant aux UV
Couleur	transparent

Électronique

	83010 On/Off Driver 90~264V AC / 127~370V DC 60 W (1 - 5 art.)
	83015 DALI Controller 90~305V AC / 127~431V DC 120 W (1 - 10 art.)
	83013 On/Off Driver 180~305V AC / 254~431V DC 120 W (1 - 10 art.)
	83012 DALI Controller 90~305V AC / 127~431V DC 60 W (1 - 5 art.)

Cables Electrification

Cable connector	No
-----------------	----



Immersion | 114 topLED 11 W DC 12 V | CRI 80
82650C36

Single emission submerged for outdoor application. The cold white LED light source with a general lighting light distribution is composed of 114 topped LEDs with CCT of 6000 K and a CRI 80; the source luminous flux is 1538 lm, with a 139.8 lm/W nominal luminous efficacy.

The device body is made of aisi 316l steel and features a steel finish; the diffuser is made of uv resistant polycarbonate. The ingress protection degree is IP68; the total weight is of 0.40 kg. The power supply driver is not provided and is to be ordered separately.

The total absorbed power is 11 W. The power supply cable is included and features a 5 m length.

The device features protection class III and can be wall lights-mounted with an outer casing, code 83022(for concrete or masonry).

Compliant with the EN 60598-1 standard and its specific provisions.

Classe d'efficacité énergétique

Ce produit contient 2 sources lumineuses de classe d'efficacité énergétique D.

Caractéristiques Techniques de l'éclairage

Light Output Ratio (LOR)	85 %
Flux lumineux (source)	1538 lm
Flux lumineux du luminaire	1318 lm
Consumption	11 W
Efficacité lumineuse du luminaire	119 lm/W
Température de couleur	6000 K
Standards de Concordance de Couleur	3 Step MacAdam
Indice de rendu chromatique	80 Ra

Température standard de l'environnement de	-40 / +50°C
Température typique sur le verre	40°C

LED Life / Failure Ratio

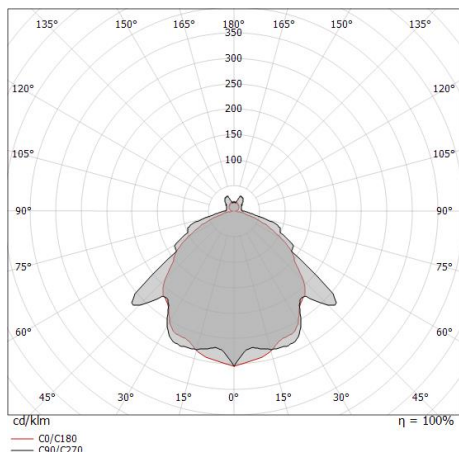
L70 B10 C0 145770h (at Tj 65 Ta 25)

UGR

UGR axial	27.8
UGR transversal	25.6
X=4H Y=8H	S=0.25H
Reflection factor	70/50/20

OPTICAL

Optique C90/C270	109°
Optique C0/C180	102°
Light distribution simmetry	Symmetrical 2 assis



Distance [m]	Cone diameter [m]	illuminance [lx]
0.5	1.39 1.24	E(0°) 1605 E(C90) 54.3° 161 E(C0) 51.1° 199
1.0	2.78 2.48	E(0°) 401 E(C90) 54.3° 40 E(C0) 51.1° 50
1.5	4.17 3.72	E(0°) 178 E(C90) 54.3° 18 E(C0) 51.1° 22
2.0	5.57 4.96	E(0°) 100 E(C90) 54.3° 10 E(C0) 51.1° 12
2.5	6.96 6.20	E(0°) 64 E(C90) 54.3° 6 E(C0) 51.1° 8
3.0	8.35 7.44	E(0°) 45 E(C90) 54.3° 4 E(C0) 51.1° 6

— C0/C180 (Half-peak divergence: 102.2°)
- - C90/C270 (Half-peak divergence: 108.6°)



MK68_Q | Submerged | Accessories
82650C36



Connecteur - Connecteur gel 3 voies - IP68 Max 3x1,5 mm2

Code
98991



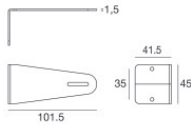
Connecteur - Connecteur 3 voies - IP68 Min.3x0.5mmq / Max 3x1.5mm2

Code
84893



Connecteur

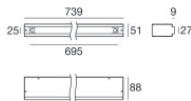
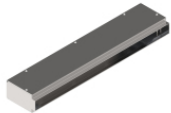
Code
89548



Étrier

position d'installation: mur, plafond, sol L=101.5mm, H=45mm, D=41.5mm.
 Matériau:Acier AISI 316, couleur:acier.

Finish
 **Code**
83020



Boîtier d'encastrement

position d'installation: sol; type installation: maçonnerie L=739mm, H=88mm, D=51mm.
 Matériau:Acier AISI 316, couleur:acier.

Finish
 **Code**
83022