



Uplights | 198-264 V | 2 x powerLED 8 W DC - 9 W AC | CRI 80
82640M12

Double emission uplights for outdoor application. The super warm white LED light source with a radial bi-directional emission light distribution is composed of 2 powerled LEDs with CCT of 2700 K and a CRI 80; the source luminous flux is 980 lm, with a 122.5 lm/W nominal luminous efficacy.

The diffuser is made of extra clear glass - tempered with a sandblasting treatment. The ingress protection degree is IP67; the total weight is of 1.32 kg.

The total absorbed power is 9 W. The power supply cable is included and features a 1 m length.

The device features protection class I and can be floor-mounted with an outer casing, code 84900(for concrete or masonry).

Compliant with the EN 60598-1 standard and its specific provisions.

Classe d'efficacité énergétique

Ce produit contient 2 sources lumineuses de classe d'efficacité énergétique E.

Caractéristiques Techniques de l'éclairage

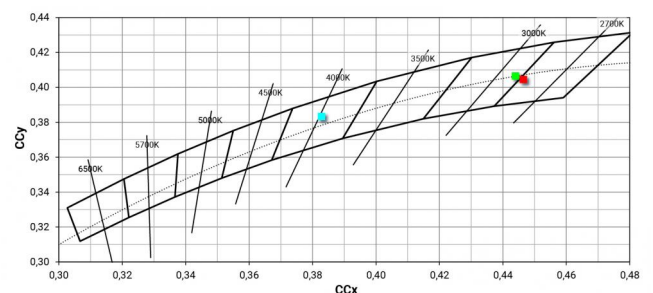
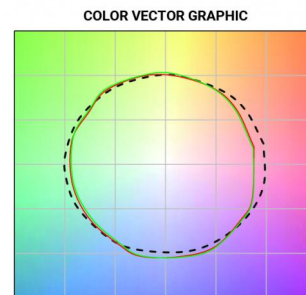
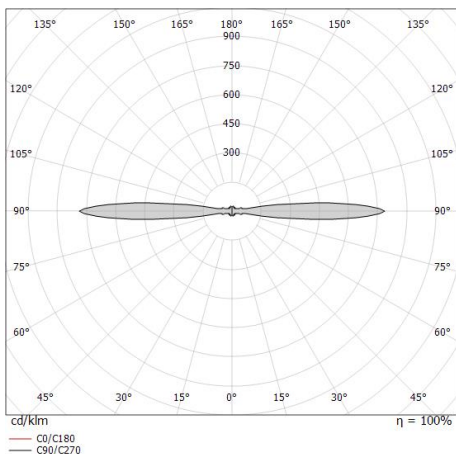
Light Output Ratio (LOR)	19 %
Flux lumineux (source)	980 lm
Flux lumineux du luminaire	189 lm
Consumption	9 W
Efficacité lumineuse du luminaire	21 lm/W
Température de couleur	2700 K
Standards de Concordance de Couleur	3 Step MacAdam
Indice de rendu chromatique	80 Ra
Black Body Locus	On
Température standard de l'environnement de	-20 / +50°C
Température typique sur le verre	50°C

LED Life / Failure Ratio

L70 B10 C0 247450h (at Tj 60 Ta 25)

OPTICAL

Optique C0/C180	180°
Light distribution simmetry	Symmetrical





Boîtier d'encastrement

position d'installation: sol; type installation: maçonnerie L=220mm, H=110mm, D=110mm.

Matériau:Plastique ABS, couleur:noir.

Code

84900