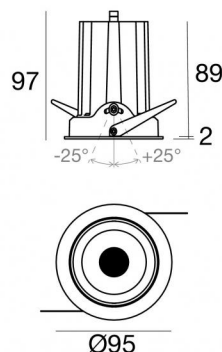
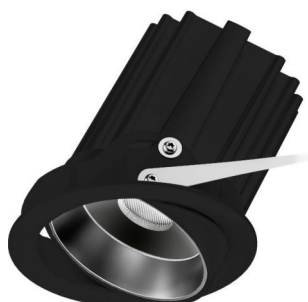







Downlights | 1 arrayLED 18 W DC 500 mA | CRI 90
82478M30



86

Données techniques	
Position d'installation	Plafond
Environnement d'installation	Intérieur
Source lumineuse	LED
Circuit structure	arrayLED
Optique	Medium Flood
Light emission direction	downward
Puissance nominale	18 W DC
Flux lumineux (source)	2692 lm
Plage de tension d'entrée	500mA
Température de couleur / Tone	2700 K
Indice de rendu chromatique	90 Ra
C.C. / V.C.	CC
Classe d'isolation	3
IP	IP40
IP bloc optique	IP44
IK	IK05
Essai au fil incandescent	850°
Montage direct sur des surfaces normalement inflammables	Oui
CE	Oui
Driver inclus	Non
Article à intensité variable	DALI - 1-10V
Orientable	Non
Basculement	Oui
angle total (plan vertical)	50 °
Piétinable	Non
Carrossable	Non
Câble inclus	Oui
Longueur du câble	0.15 m
Revêtement en résine	Non
Type d'émission lumineuse	Émission simple
Poids net	0.370 Kg
Protection contre les décharges électrostatiques	Non
Protection contre les surtensions	Non

Finition corps	
Matériau	Aluminium moulé sous pression EN AB - 46100
Couleur	Noir
Fabrication	Revêtement en poudre

Électronique	
	99115 1-10V - N/O button Multi Power 198-264V AC / 180-275V DC (1 art.)
	99106 On/Off Driver 198-264V AC (1 art.)
	C-E100001 Push and Simply Dim - DALI-2 Multi Power 198-264V AC / 180-275V DC (1 art.)

Cables Electrification	
Cable connector	MALE JST SMR-02V-B
Cable connector	FEMALE JST SMP-02V-BC



Downlights | 1 arrayLED 18 W DC 500 mA | CRI 90
82478M30

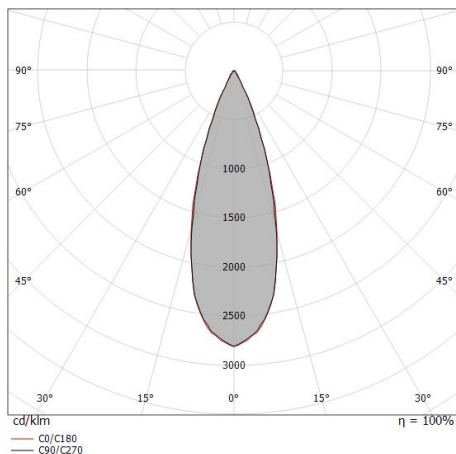
Single emission recessed downlights for indoor application. The super warm white LED light source with a medium flood light distribution is composed of 1 arrayed LEDs with CCT of 2700 K and a CRI 90; the source luminous flux is 2692 lm, with a 149.6 lm/W nominal luminous efficacy.

The device body is made of die-cast aluminium en ab - 46100 and features a black finish, processed by means of powder coating. The ingress protection degree is IP40; the total weight is of 0.370 kg. The power supply driver is not provided and is to be ordered separately.

The total absorbed power is 18 W. The power supply cable is included and features a 0.15 m length.

The device features protection class III and can be ceiling-mounted, with a 86 mm diameter hole (in plasterboard).

Compliant with the EN 60598-1 standard and its specific provisions.



Distance [m]	Cone diameter [m]	illuminance [lx]
0.5	0.30 0.31	E(0°) 23508 E(C90) 16.7° 10365 E(C0) 17.1° 10353
1.0	0.60 0.62	E(0°) 5877 E(C90) 16.7° 2591 E(C0) 17.1° 2588
1.5	0.90 0.92	E(0°) 2612 E(C90) 16.7° 1152 E(C0) 17.1° 1150
2.0	1.20 1.23	E(0°) 1469 E(C90) 16.7° 648 E(C0) 17.1° 647
2.5	1.50 1.54	E(0°) 940 E(C90) 16.7° 415 E(C0) 17.1° 414
3.0	1.80 1.85	E(0°) 653 E(C90) 16.7° 288 E(C0) 17.1° 288

Distance [m] Cone diameter [m] illuminance [lx]
 — C0/C180 (Half-peak divergence: 34.2°)
 — C90/C270 (Half-peak divergence: 33.4°)

Classe d'efficacité énergétique

Ce produit contient une source lumineuse de classe d'efficacité énergétique E.

Caractéristiques Techniques de l'éclairage

Light Output Ratio (LOR)	77 %
Flux lumineux (source)	2692 lm
Flux lumineux du luminaire	2090 lm
Consumption	18 W
Efficacité lumineuse du luminaire	116 lm/W
Température de couleur	2700 K
Standards de Concordance de Couleur	2 Step MacAdam
Indice de rendu chromatique	90 Ra
Colour Rendering Index	60 R9
Black Body Locus	On
Température standard de l'environnement de	-20 / +50°C
Température typique sur le verre	40°C

LED Life / Failure Ratio

L70 B10 C0 252000h (at Tj 65 Ta 25)

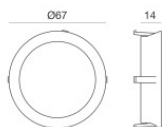
UGR

UGR axial	15.2
UGR transversal	15.3
X=4H Y=8H	S=0.25H
Reflection factor	70/50/20

OPTICAL

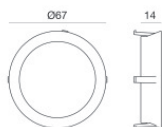
Optique C0/C180	33°
Symmetrical	





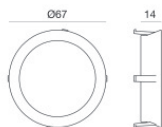
Bague décorative blanche

Code
99901



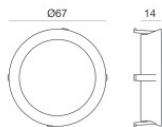
Bague décorative de couleur or

Code
99902



Bague décorative couleur cuivre

Code
99903



Bague décorative en chrome

Code
99904