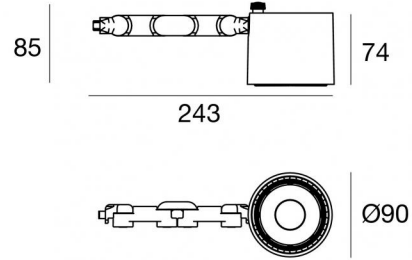


Navata_Optus



Projectors | 1 arrayLED 24 W DC 700 mA | CRI 98
82392N60



Technical data	
Type	Surface
Installation position	Wall lights - Ceiling - Floor
Installation environment	Indoor
Light Source	LED
Circuit structure	arrayLED
Optics	Wide Flood
Light emission direction	frontal
Nominal power	24 W DC
Source lumens	3974 lm
Input voltage range	700mA
CCT / Tone	4000 K
Colour rendering index	98 Ra
C.C. / C.V.	CC
Safety class	3
IP	IP20
Glow wire test	850°
Direct mounting on normally flammable surfaces	Yes
CE	Yes
Driver included	No
Dimmable article	DALI - 1-10V
Directional	Swivelling
total angle (vertical plane)	180 °
total angle (horizontal plane)	360 °
Tilting	No
Walk-over	No
Drive-over	No
Cable included	Yes
Cable length	0,2 m
Resin potting	No
Type of light emission	Single emission
Net weight	0.600 Kg
Electrostatic discharge protection	No
Surge protection	No

Finishing casing

Material	Aluminium
Colour	Black
Processing	Coating

Electronics

	99112 On/Off Driver 198-264V AC (1 art.)
	99941 Push and Simply Dim - DALI-2 Controller (1 art.)
	99943 Multi Power 198-264V AC / 176-264V DC (1 art.)
	99951 DALI Multi Power 198-264V AC / 176-275V DC (1 art.)
	99953 Multi Power 198-264V AC / 176-264V DC (1 art.)
	83172 Bluetooth Controller (1 art.)
	C-E100008 Multi Power 198-264V AC / 180-275V DC (1 art.)



Projectors | 1 arrayLED 24 W DC 700 mA | CRI 98 | Base 82392N60

Single emission projectors for indoor application. The natural white LED light source with a wide flood light distribution is composed of 1 arrayed LEDs with CCT of 4000 K and a CRI 98; the source luminous flux is 3974 lm, with a 165.6 lm/W nominal luminous efficacy.

The device body is made of aluminium and features a black finish, processed by means of coating. The ingress protection degree is IP20; the total weight is of 0.600 kg. The power supply driver is not provided and is to be ordered separately.

The total absorbed power is 24 W. The power supply cable is included and features a 0,2 m length.

The device features protection class III and can be wall lights, ceiling or floor-mounted.

Compliant with the EN 60598-1 standard and its specific provisions.

Energy efficiency class

This product contains a light source of energy efficiency class E.

Illuminotechnical Features

Light Output Ratio (LOR)	62 %
Source lumens	3974 lm
Delivered lumens	2483 lm
Consumption	24 W
Luminaire efficacy	103 lm/W
Colour temperature	4000 K
Standard Deviation of Colour Matching	2 Step MacAdam
Colour rendering index	98 Ra
Black Body Locus	On
Standard Operating Ambient Temperature	-20 / +50°C
Ordinary temperature on the glass	40°C

LED Life / Failure Ratio

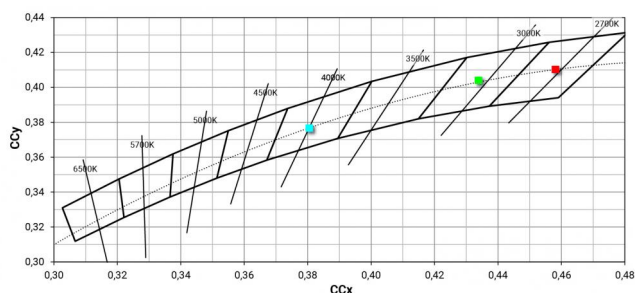
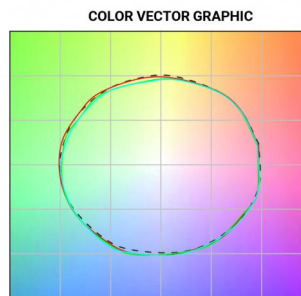
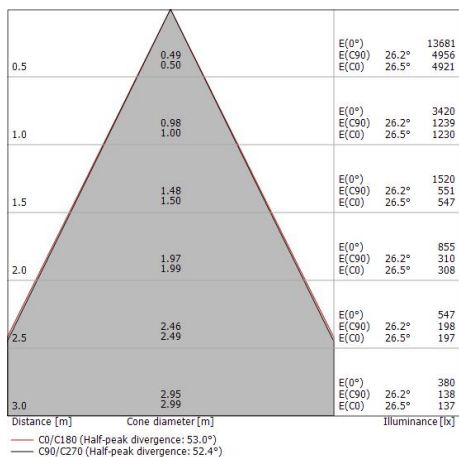
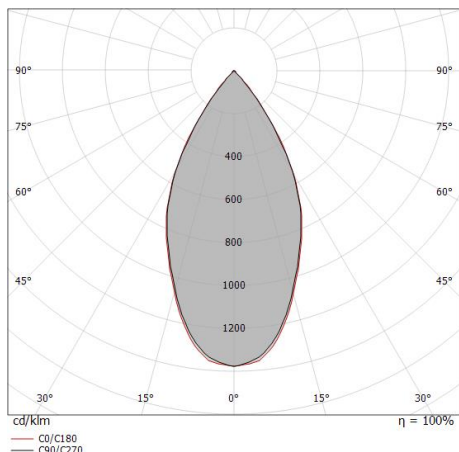
L70 B10 C0 252000h (at Tj 65 Ta 25)

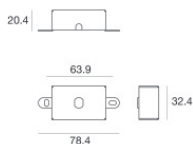
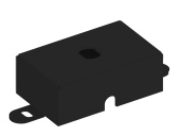
UGR

UGR axial	21.8
UGR transversal	21.9
X=4H Y=8H	S=0.25H
Reflection factor	70/50/20

OPTICAL

C0/C180 optics	52°
Light distribution simmetry	Symmetrical





Fixing base - Base without power supply
Material:Iron, colour:Black, processing:Coating.

Code
98589



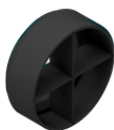
Diffuser
Diffuser Type: elliptical filter.
Material:Pom-C, colour:Black.

Code
99797



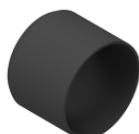
Anti-glare
Anti-glare Type: honeycomb louvre.
Material:Pom-C, colour:Black.

Code
99798



Anti-glare
Anti-glare Type: cross louvres.
Material:Pom-C, colour:Black.

Code
99799



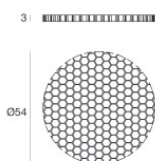
Anti-glare
Anti-glare Type: cylindrical screen.
Material:Pom-C, colour:Black.

Code
99796



Anti-glare
Anti-glare Type: 45° cylindrical screen.
Material:Pom-C, colour:Black.

Code
99795



Anti-glare
Anti-glare Type: honeycomb louvre.
Material:Pom-C, colour:Black.

Code
99842



Optics
Light distribution: spot,Cover material: uv resistant polycarbonate

Code
99808



Optics
Light distribution: medium flood,Cover material: uv resistant polycarbonate

Code
99809



Optics
Light distribution: flood,Cover material: uv resistant polycarbonate

Code
99810



Optics - Focal kit (min 16° max 42°)
Light distribution: adjustable,Cover material: aluminium

Code
99843