



Éléments linéaires | 220-240 V | 6 x powerLED 12.2 W DC - 13.5 W AC | CRI 80
81597M60

Classe d'efficacité énergétique

Ce produit contient une source lumineuse de classe d'efficacité énergétique D.

Caractéristiques Techniques de l'éclairage

Light Output Ratio (LOR)	60 %
Flux lumineux (source)	1692 lm
Flux lumineux du luminaire	1020 lm
Consumption	13.5 W
Efficacité lumineuse du luminaire	75 lm/W
Température de couleur	2700 K
Standards de Concordance de Couleur	1.5 Step
Indice de rendu chromatique	80 Ra
Température standard de l'environnement de	
	-20 / +50°C
Température typique sur le verre	
	40°C

LED Life / Failure Ratio

L70 B10 C0 361980h (at Tj 60 Ta 25)

UGR

UGR axial	18
UGR transversal	14.8
X=4H Y=8H	S=0.25H
Reflection factor	70/50/20

OPTICAL

Optique C0/C180	53°
Light distribution simmetry	Symmetrical

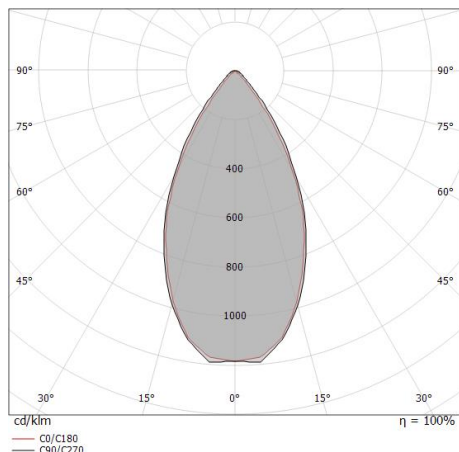
Single emission lines for outdoor application. The super warm white LED light source with a wide flood light distribution is composed of 6 powered LEDs with CCT of 2700 K and a CRI 80; the source luminous flux is 1692 lm, with a 138.7 lm/W nominal luminous efficacy.

The device body is made of aluminium 6060 and features a anodised black finish, processed by means of 15 µm anodizing; the diffuser is made of extra clear glass - tempered with a silk-screening treatment. The ingress protection degree is IP67; the total weight is of 1.5 kg.

The total absorbed power is 13.5 W. The power supply cable is included and features a 0.2 m length.

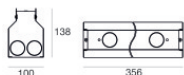
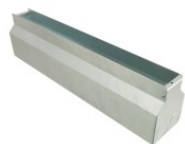
The device features protection class I and can be wall lights or floor-mounted with an outer casing, code 98671 (for concrete or masonry).

Compliant with the EN 60598-1 standard and its specific provisions.



Distance [m]	Cone diameter [m]	illuminance [lx]
0.5	0.52 0.50	E(0°) 4826 E(C90) 1709 E(C0) 1724
1.0	1.03 1.01	E(0°) 1207 E(C90) 427 E(C0) 431
1.5	1.55 1.51	E(0°) 536 E(C90) 190 E(C0) 192
2.0	2.06 2.01	E(0°) 302 E(C90) 107 E(C0) 108
2.5	2.58 2.51	E(0°) 193 E(C90) 68 E(C0) 69
3.0	3.10 3.02	E(0°) 134 E(C90) 47 E(C0) 48

Distance [m] Cone diameter [m] illuminance [lx]
 C0/C180 (Half-peak divergence: 53.4°)
 C90/C270 (Half-peak divergence: 54.6°)



Boîtier d'encastrement

position d'installation: mur, sol; type installation: maçonnerie L=356mm, H=138.3mm, D=100.2mm.

Matériau:Fer, couleur:zinc, fabrication :Zingage.

Finish

Grey

Code

98671



Câble et connecteur

Longueur 5000 mm.

Code

99822



Câble et connecteur

Longueur 1000 mm.

Code

99823



Câble et connecteur

Longueur 5000 mm.

Code

99824



Câble et connecteur

Longueur 10000 mm.

Code

99825



Câble et connecteur

Longueur 1000 mm.

Code

99826