





Éléments linéaires | 220-240 V | 6 x powerLED 12.2 W DC - 13.5 W AC | CRI 80  
**81597M08**

Single emission lines for outdoor application. The super warm white LED light source with a narrow spot light distribution is composed of 6 powerLED LEDs with CCT of 2700 K and a CRI 80; the source luminous flux is 1692 lm, with a 138.7 lm/W nominal luminous efficacy.

The device body is made of aluminium 6060 and features a anodised black finish, processed by means of 15 µm anodizing; the diffuser is made of extra clear glass - tempered with a silk-screening treatment. The ingress protection degree is IP67; the total weight is of 1.5 kg.

The total absorbed power is 13.5 W. The power supply cable is included and features a 0.2 m length.

The device features protection class I and can be wall lights or floor-mounted with an outer casing, code 98671 (for concrete or masonry).

Compliant with the EN 60598-1 standard and its specific provisions.

### Classe d'efficacité énergétique

Ce produit contient une source lumineuse de classe d'efficacité énergétique D.

### Caractéristiques Techniques de l'éclairage

Light Output Ratio (LOR)	57 %
Flux lumineux (source)	1692 lm
Flux lumineux du luminaire	977 lm
Consumption	13.5 W
Efficacité lumineuse du luminaire	72 lm/W
Température de couleur	2700 K
Standards de Concordance de Couleur	1.5 Step
Indice de rendu chromatique	80 Ra

Température standard de l'environnement de	-20 / +50°C
Température typique sur le verre	40°C

### LED Life / Failure Ratio

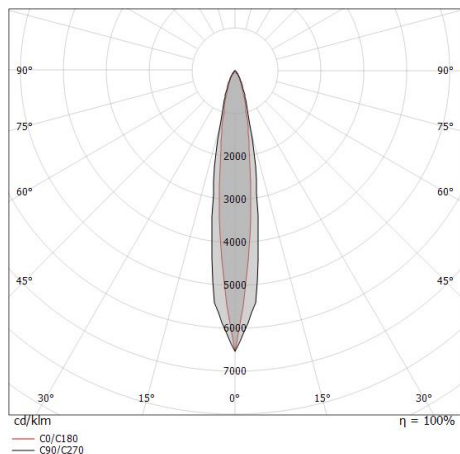
L70 B10 C0 361980h (at Tj 60 Ta 25 )

### UGR

UGR axial	11.4
UGR transversal	10
X=4H   Y=8H	S=0.25H
Reflection factor	70/50/20

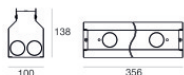
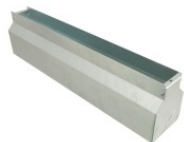
### OPTICAL

Optique C90/C270	19°
Optique C0/C180	13°
Light distribution simmetry	Symmetrical 2 assis



Distance [m]	Cone diameter [m]	illuminance [lx]
0.5	0.16 0.11	E(0°) 25502 E(C90) 9.3° 12257 E(C0) 6.5° 12518
1.0	0.33 0.23	E(0°) 6376 E(C90) 9.3° 3064 E(C0) 6.5° 3130
1.5	0.49 0.34	E(0°) 2834 E(C90) 9.3° 1362 E(C0) 6.5° 1391
2.0	0.66 0.46	E(0°) 1594 E(C90) 9.3° 766 E(C0) 6.5° 782
2.5	0.82 0.57	E(0°) 1020 E(C90) 9.3° 490 E(C0) 6.5° 501
3.0	0.98 0.68	E(0°) 708 E(C90) 9.3° 340 E(C0) 6.5° 348

Distance [m] Cone diameter [m] illuminance [lx]  
 — C0/C180 (Half-peak divergence: 13.0°)  
 — C90/C270 (Half-peak divergence: 18.6°)



**Boîtier d'encastrement**

position d'installation: mur, sol; type installation: maçonnerie L=356mm, H=138.3mm, D=100.2mm.

Matériau:Fer, couleur:zinc, fabrication :Zingage.

**Finish**

Grey

**Code**

98671



**Câble et connecteur**

Longueur 5000 mm.

**Code**

99822



**Câble et connecteur**

Longueur 1000 mm.

**Code**

99823



**Câble et connecteur**

Longueur 5000 mm.

**Code**

99824



**Câble et connecteur**

Longueur 10000 mm.

**Code**

99825



**Câble et connecteur**

Longueur 1000 mm.

**Code**

99826