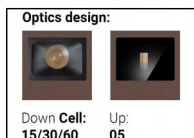




Lampe murale | 198-264 V  
2 x powerLEDs - 1 arrayLED 13.4 W DC - 15.5 W AC | CRI 80  
**76627W30**



| Données techniques                                       |                           |
|--|---------------------------|
| Typologie  | Surface                   |
| Position d'installation                                  | Mur                       |
| Environnement d'installation                             | Extérieur                 |
| Source lumineuse   | LED                       |
| Circuit structure  | powerLEDs + arrayLED      |
| Optique  | Ultra Spot + Medium Flood |
| Light emission direction                                 | upward + downward         |
| Puissance nominale                                       | 13.4 W DC                 |
| Pouvoir total  | 15.5 W                    |
| Flux lumineux (source)                                   | 1311 lm                   |
| Tension d'entrée nominale                                | 220 - 240 V AC            |
| Plage de tension d'entrée                                | 198 - 264 V AC            |
| Frequency  | 50 - 60 Hz                |
| Température de couleur / Tone                            | 3000 K                    |
| Indice de rendu chromatique                              | 80 Ra                     |
| C.C. / V.C.  | AC                        |
| Classe d'isolation                                       | 1                         |
| IP   | IP65                      |
| IK   | IK08                      |
| Essai au fil incandescent                                | 850°                      |
| Montage direct sur des surfaces normalement inflammables | Oui                       |
| CE   | Oui                       |
| Driver inclus  | Driver                    |
| Article à intensité variable                             | Non                       |
| Orientable   | Non                       |
| Basculement  | Non                       |
| Piétinable   | Non                       |
| Carrossable  | Non                       |
| Câble inclus   | Non                       |
| Revêtement en résine                                     | Non                       |
| Type d'émission lumineuse                                | Double émission           |
| Poids net  | 0.83 Kg                   |
| Protection contre les décharges électrostatiques         | Oui                       |
| Protection contre les surtensions                        | 1 KV                      |

| Finition corps     |   |
|--------------------|---|
| Matériau           | Aluminium moulé sous pression EN AB - 46100         |
| Couleur            | Dark brown  |
| Fabrication        | Anodisation à pores ouverts + revêtement par poudre |
| Finition diffuseur |   |
| Matériau           | Verre extra clair - trempé                          |
| Couleur            | transparent   |
| Fabrication        | Séigraphie  |

Lampe murale | 198-264 V | 2 x powerLEDs - 1 arrayLED 13.4 W DC - 15.5 W AC | CRI 80  
**76627W30**

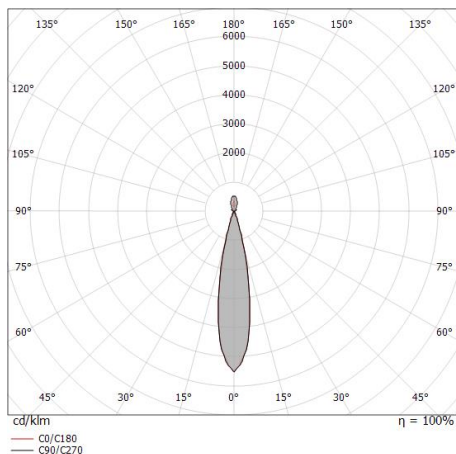
Double emission wall lights for outdoor application. The warm white LED light source with a ultra spot light distribution is composed of 2 powered LEDs with CCT of 3000 K and a CRI 80; the source luminous flux is 425 lm, with a 63.4 lm/W nominal luminous efficacy The warm white LED light source with a flood light distribution is composed of 1 arrayed LEDs with CCT of 3000 K and a CRI 80; the source luminous flux is 886 lm, with a 132.2 lm/W nominal luminous efficacy.

The device body is made of die-cast aluminium en ab - 46100 and features a dark brown finish, processed by means of open pore anodizing + powder coating; the diffuser is made of extra clear glass - tempered with a silk-screening treatment. The ingress protection degree is IP65; the total weight is of 0.83 kg.

The total absorbed power is 15.5 W.

The device features protection class I and can be wall lights-mounted.

Compliant with the EN 60598-1 standard and its specific provisions.



| Distance [m] | Cone diameter [m] | illuminance [lx]                                     |
|--------------|-------------------|--|
| 0.5          | 0.19<br>0.19      | E(0°) 15370<br>E(C90) 10.9° 7286<br>E(C0) 10.8° 7310 |
| 1.0          | 0.39<br>0.38      | E(0°) 3943<br>E(C90) 10.9° 1822<br>E(C0) 10.8° 1827  |
| 1.5          | 0.58<br>0.57      | E(0°) 1708<br>E(C90) 10.9° 810<br>E(C0) 10.8° 812    |
| 2.0          | 0.77<br>0.76      | E(0°) 961<br>E(C90) 10.9° 455<br>E(C0) 10.8° 457     |
| 2.5          | 0.96<br>0.95      | E(0°) 615<br>E(C90) 10.9° 291<br>E(C0) 10.8° 292     |
| 3.0          | 1.16<br>1.14      | E(0°) 427<br>E(C90) 10.9° 202<br>E(C0) 10.8° 203     |

Distance [m] Cone diameter [m] illuminance [lx]

— C0/C180 (Half-peak divergence: 21.6°)  
 — C90/C270 (Half-peak divergence: 21.8°)

### Classe d'efficacité énergétique

Ce produit contient 2 sources lumineuses de classe d'efficacité énergétique E, E.

### Caractéristiques Techniques de l'éclairage

|                                     |                |
|-------------------------------------|----------------|
| Light Output Ratio (LOR)            | 53 %           |
| Flux lumineux (source)              | 1311 lm        |
| Flux lumineux du luminaire          | 697 lm         |
| Consumption                         | 15.5 W         |
| Efficacité lumineuse du luminaire   | 44 lm/W        |
| Température de couleur              | 3000 K         |
| Standards de Concordance de Couleur | 3 Step MacAdam |
| Indice de rendu chromatique         | 80 Ra          |

|  |             |
|--|-------------|
| Température standard de l'environnement de | -20 / +50°C |
| Température typique sur le verre           | 40°C        |

### LED Life / Failure Ratio

L70 B10 C0 134020h (at Tj 65 Ta 25 )

### UGR

|                   |          |
|-------------------|----------|
| UGR axial         | 13       |
| UGR transversal   | 13.9     |
| X=4H   Y=8H       | S=0.25H  |
| Reflection factor | 70/50/20 |

### OPTICAL

|                             |             |
|-----------------------------|-------------|
| Optique C0/C180             | 22°         |
| Light distribution simmetry | Symmetrical |