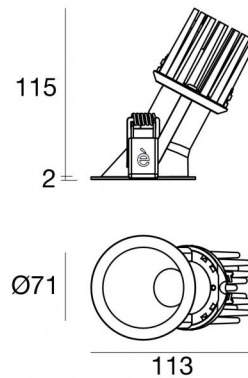




Downlights | 1 x powerLED 10 W DC 800 mA | CRI 92
90850M60



64

| Datos técnicos | |
|---|---------------------|
| Posición de instalación | Techo |
| Ambiente de instalación | Interiores |
| Fuente de luz | LED |
| Circuit structure | powerLED |
| Óptica | Medium Flood |
| Light emission direction | downward |
| Potencia nominal | 10 W DC |
| Flujo luminoso (fuente) | 960 lm |
| Rango de voltaje de entrada | 800mA |
| CCT / Tone | 2700 K |
| Índice de rendimientos cromático | 92 Ra |
| C.C. / C.V. | CC |
| Clase de aislamiento | 3 |
| IP | IP44 |
| IP vano óptico | IP65 |
| Test del hilo incandescente | 850° |
| Montaje directo sobre superficies normalmente inflamables | Sí |
| CE | Sí |
| Driver incluido. | No |
| Artículo regulable | DALI - 1-10V |
| Orientabilidad | No |
| Basculación | No |
| Practicabilidad | No |
| Transitabilidad | No |
| Cable incluido. | No |
| Resinado | No |
| Tipología de emisión luminosa | Una emisión |
| Peso neto | 0.250 Kg |
| Protección descargas electrostáticas | No |
| Protección contra sobretensiones | No |
| Tecnología óptica | F.O.L. - Honey comb |
| Características tecnológicas del producto | TVS |

Acabado cuerpo

| | |
|-------------|--------------------------------|
| Material | Aluminio fundido EN AB - 46100 |
| Color | Blanco |
| Elaboración | Recubrimiento en polvo |

Acabado difusor

| | |
|----------|---|
| Material | Policarbonato resistente a los rayos UV |
| Color | transparente |

Acabado radiador

| | |
|-------------|--------------------------------|
| Material | Aluminio fundido EN AB - 46100 |
| Elaboración | Pulido |

Electrónica



99135
On/Off Driver 198~264V AC



99345
DALI - Push and Simply Dim Multi Power 198~264V AC / 176~275V DC



99735
Multi Power 198~264V AC / 180~275V DC



99733
1-10V Multi Power 198~264V AC / 180~275V DC



C-E100013
Push and Simply Dim - DALI-2 Controller

Downlights | 1 x powerLED 10 W DC 800 mA | CRI 92 90850M60

Single emission recessed downlights for indoor application. The super warm white LED light source with a medium flood light distribution is composed of 1 powerLED LEDs with CCT of 2700 K and a CRI 92; the source luminous flux is 960 lm, with a 96.0 lm/W nominal luminous efficacy.

The device body is made of die-cast aluminium en ab - 46100 and features a white finish, processed by means of powder coating; the diffuser is made of uv resistant polycarbonate. The ingress protection degree is IP44; the total weight is of 0.250 kg. The power supply driver is not provided and is to be ordered separately.

The total absorbed power is 10 W.

The device features protection class III and can be ceiling-mounted, with a 64 mm diameter hole (in plasterboard).

Compliant with the EN 60598-1 standard and its specific provisions.

Clase de eficiencia energética

Este producto contiene una fuente de luz de clase de eficiencia energética F.

Características Luminotécnicas

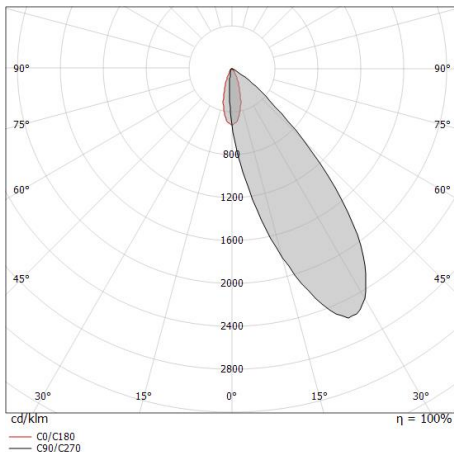
| | |
|---|----------------|
| Light Output Ratio (LOR) | 37 % |
| Flujo luminoso (fuente) | 960 lm |
| Flujo luminoso de luminaria | 359 lm |
| Consumption | 10 W |
| Rendimiento luminoso de las luminarias | 35 lm/W |
| Temperatura de color | 2700 K |
| Standard Deviation of Colour Matching | 2 Step MacAdam |
| Índice de rendimientos cromático | 92 Ra |
| Black Body Locus | On |
| Temperatura estándar del ambiente de servicio | -20 / +50°C |
| Temperatura típica sobre el vidrio | 40°C |

LED Life / Failure Ratio

L70 B10 C0 247450h (at Tj 60 Ta 25)

OPTICAL

| | |
|-----------------------------|--------------|
| Óptica C0/C180 | 34° |
| Light distribution symmetry | Asymmetrical |



| Distance [m] | Cone diameter [m] | Illuminance [lx] | E(0°) E(C0) | 17.2° | 749 328 |
|--------------|-------------------|------------------|----------------|-------|------------|
| 0.5 | 0.31 | | E(0°) E(C0) | 17.2° | 749 328 |
| 1.0 | 0.62 | | E(0°) E(C0) | 17.2° | 187 82 |
| 1.5 | 0.93 | | E(0°) E(C0) | 17.2° | 83 36 |
| 2.0 | 1.24 | | E(0°) E(C0) | 17.2° | 47 20 |
| 2.5 | 1.55 | | E(0°) E(C0) | 17.2° | 30 13 |
| 3.0 | 1.86 | 9 | E(0°) E(C0) | 17.2° | 21 9 |

Distance [m] Cone diameter [m] Illuminance [lx]
— C0/C180 (Half-peak divergence: 34.4°)

