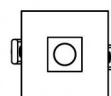




Downlights | 1 x powerLED 8 W DC 700 mA | CRI 90
90666N30



□71



64

| Datos técnicos | |
|---|---------------------|
| Posición de instalación | Techo |
| Ambiente de instalación | Interiores |
| Fuente de luz | LED |
| Circuit structure | powerLED |
| Óptica | Flood |
| Light emission direction | downward |
| Potencia nominal | 8 W DC |
| Flujo luminoso (fuente) | 796 lm |
| Rango de voltaje de entrada | 700mA |
| CCT / Tone | 4000 K |
| Índice de rendimientos cromático | 90 Ra |
| C.C. / C.V. | CC |
| Clase de aislamiento | 3 |
| IP | IP44 |
| IP vano óptico | IP65 |
| Test del hilo incandescente | 850° |
| Montaje directo sobre superficies normalmente inflamables | Sí |
| CE | Sí |
| Driver incluido. | No |
| Artículo regulable | DALI - 1-10V |
| Orientabilidad | No |
| Basculación | No |
| Practicabilidad | No |
| Transitabilidad | No |
| Cable incluido. | No |
| Resinado | No |
| Tipología de emisión luminosa | Una emisión |
| Peso neto | 0.192 Kg |
| Protección descargas electrostáticas | No |
| Protección contra sobretensiones | No |
| Tecnología óptica | F.O.L. - Honey comb |
| Características tecnológicas del producto | TVS |

Acabado cuerpo

| | |
|-------------|--------------------------------|
| Material | Aluminio fundido EN AB - 46100 |
| Color | Blanco |
| Elaboración | Recubrimiento en polvo |

Acabado difusor

| | |
|----------|---|
| Material | Policarbonato resistente a los rayos UV |
| Color | transparente |

Acabado radiador

| | |
|-------------|--------------------------------|
| Material | Aluminio fundido EN AB - 46100 |
| Elaboración | Pulido |

Electrónica



99147
On/Off Driver 198~264V AC (2 - 3 art.)



99735
Multi Power 198~264V AC / 180~275V DC (1 art.)



99733
1-10V Multi Power 198~264V AC / 180~275V DC (1 art.)



C-E100012
Push and Simply Dim - DALI-2 Controller (1 art.)



C-E100016
Push and Simply Dim - DALI-2 Controller (2 - 3 art.)

Downlights | 1 x powerLED 8 W DC 700 mA | CRI 90
90666N30

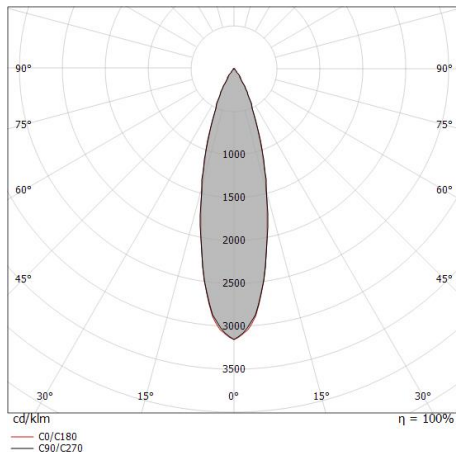
Single emission recessed downlights for indoor application. The natural white LED light source with a flood light distribution is composed of 1 powerLEDs with CCT of 4000 K and a CRI 90; the source luminous flux is 796 lm, with a 99.5 lm/W nominal luminous efficacy.

The device body is made of die-cast aluminium en ab - 46100 and features a white finish, processed by means of powder coating; the diffuser is made of uv resistant polycarbonate. The ingress protection degree is IP44; the total weight is of 0.192 kg. The power supply driver is not provided and is to be ordered separately.

The total absorbed power is 8 W.

The device features protection class III and can be ceiling-mounted, with a 64 mm diameter hole (in plasterboard) with an outer casing, code 89374(for concrete or masonry).

Compliant with the EN 60598-1 standard and its specific provisions.



| Distance [m] | Cone diameter [m] | illuminance [lx] |
|--------------|-------------------|---|
| 0.5 | 0.25 0.25 | E(0°) 3866 E(C90) 14.1° 1774 E(C0) 14.0° 1780 |
| 1.0 | 0.50 0.50 | E(0°) 967 E(C90) 14.1° 444 E(C0) 14.0° 445 |
| 1.5 | 0.75 0.75 | E(0°) 430 E(C90) 14.1° 197 E(C0) 14.0° 198 |
| 2.0 | 1.00 1.00 | E(0°) 242 E(C90) 14.1° 111 E(C0) 14.0° 111 |
| 2.5 | 1.26 1.25 | E(0°) 155 E(C90) 14.1° 71 E(C0) 14.0° 71 |
| 3.0 | 1.51 1.50 | E(0°) 107 E(C90) 14.1° 49 E(C0) 14.0° 49 |

— C0/C180 (Half-peak divergence: 28.0°)
 — C90/C270 (Half-peak divergence: 28.2°)

Clase de eficiencia energética

Este producto contiene una fuente de luz de clase de eficiencia energética F.

Características Luminotécnicas

| | |
|---|----------------|
| Light Output Ratio (LOR) | 38 % |
| Flujo luminoso (fuente) | 796 lm |
| Flujo luminoso de luminaria | 307 lm |
| Consumption | 8 W |
| Rendimiento luminoso de las luminarias | 38 lm/W |
| Temperatura de color | 4000 K |
| Standard Deviation of Colour Matching | 3 Step MacAdam |
| Índice de rendimientos cromático | 90 Ra |
| Black Body Locus | On |
| Temperatura estándar del ambiente de servicio | -20 / +50°C |
| Temperatura típica sobre el vidrio | 40°C |

LED Life / Failure Ratio

L70 B10 C0 247450h (at Tj 60 Ta 25)

UGR

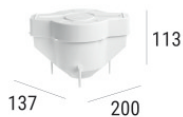
| | |
|-------------------|----------|
| UGR axial | 14.6 |
| UGR transversal | 14.5 |
| X=4H Y=8H | S=0.25H |
| Reflection factor | 70/50/20 |

OPTICAL

| | |
|-----------------------------|-------------|
| Óptica C0/C180 | 28° |
| Light distribution simmetry | Symmetrical |

COLOR VECTOR GRAPHIC





Caja de empotrar

posición de instalación: techo; tipo instalación: albañilería L=200mm, H=113mm, D=137mm.

Material:polipropileno, color:blanco.

Code

89373



Caja de empotrar

posición de instalación: techo; tipo instalación: albañilería L=370mm, H=120mm, D=200mm.

Material:polipropileno, color:blanco.

Code

89374