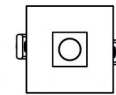
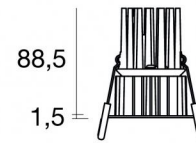




Downlights | 1 x powerLED 8 W DC 700 mA | CRI 90  
**90660W45**



□71

64

| Datos técnicos  |              |
|---|--------------|
| Posición de instalación                                   | Techo        |
| Ambiente de instalación                                   | Interiores   |
| Fuente de luz   | LED          |
| Circuit structure   | powerLED     |
| Óptica  | Wide Flood   |
| Light emission direction                                  | downward     |
| Potencia nominal  | 8 W DC       |
| Flujo luminoso (fuente)                                   | 738 lm       |
| Rango de voltaje de entrada                               | 700mA        |
| CCT / Tone  | 3000 K       |
| Índice de rendimientos cromático                          | 90 Ra        |
| C.C. / C.V.   | CC           |
| Clase de aislamiento                                      | 3            |
| IP  | IP44         |
| IP vano óptico  | IP65         |
| Test del hilo incandescente                               | 850°         |
| Montaje directo sobre superficies normalmente inflamables | Sí           |
| CE  | Sí           |
| Driver incluido.  | No           |
| Artículo regulable  | DALI - 1-10V |
| Orientabilidad  | No           |
| Basculación   | No           |
| Practicabilidad   | No           |
| Transitabilidad   | No           |
| Cable incluido.   | No           |
| Resinado  | No           |
| Tipología de emisión luminosa                             | Una emisión  |
| Peso neto   | 0.192 Kg     |
| Protección descargas electrostáticas                      | No           |
| Protección contra sobretensiones                          | No           |
| Tecnología óptica   | F.O.L.       |
| Características tecnológicas del producto                 | TVS          |

### Acabado cuerpo

|             |                                |
|-------------|--------------------------------|
| Material    | Aluminio fundido EN AB - 46100 |
| Color       | Blanco                         |
| Elaboración | Recubrimiento en polvo         |

### Acabado difusor

|          |   |
|----------|---|
| Material | Policarbonato resistente a los rayos UV |
| Color    | transparente                            |

### Acabado radiador

|             |                                |
|-------------|--------------------------------|
| Material    | Aluminio fundido EN AB - 46100 |
| Elaboración | Pulido                         |

### Electrónica



99147  
On/Off Driver 198~264V AC (1 - 3 art.)



99735  
Multi Power 198~264V AC / 180~275V DC (1 art.)



99733  
1-10V Multi Power 198~264V AC / 180~275V DC (1 art.)



C-E100012  
Push and Simply Dim - DALI-2 Controller (1 art.)



C-E100016  
Push and Simply Dim - DALI-2 Controller (1 - 3 art.)

## Downlights | 1 x powerLED 8 W DC 700 mA | CRI 90 90660W45

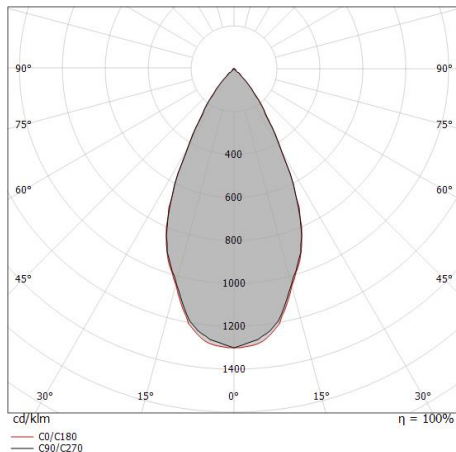
Single emission recessed downlights for indoor application. The warm white LED light source with a wide flood light distribution is composed of 1 powerLED LEDs with CCT of 3000 K and a CRI 90; the source luminous flux is 738 lm, with a 92.3 lm/W nominal luminous efficacy.

The device body is made of die-cast aluminium en ab - 46100 and features a white finish, processed by means of powder coating; the diffuser is made of uv resistant polycarbonate. The ingress protection degree is IP44; the total weight is of 0.192 kg. The power supply driver is not provided and is to be ordered separately.

The total absorbed power is 8 W.

The device features protection class III and can be ceiling-mounted, with a 64 mm diameter hole (in plasterboard) with an outer casing, code 89374(for concrete or masonry).

Compliant with the EN 60598-1 standard and its specific provisions.



| Distance [m] | Cone diameter [m] | Illuminance [lx] |
|--------------|-------------------|------------------|
| 0.5          | 0.49              | 2278             |
| 1.0          | 0.98              | 569              |
| 1.5          | 1.47              | 253              |
| 2.0          | 1.96              | 142              |
| 2.5          | 2.45              | 91               |
| 3.0          | 2.94              | 63               |

| Distance [m] | Cone diameter [m] | E(0°) | E(C90) | E(C0) |
|--------------|-------------------|-------|--------|-------|
| 0.5          | 0.49              | 26.1° | 830    | 823   |
| 1.0          | 0.98              | 26.1° | 207    | 206   |
| 1.5          | 1.47              | 26.1° | 92     | 91    |
| 2.0          | 1.96              | 26.1° | 52     | 51    |
| 2.5          | 2.45              | 26.1° | 33     | 33    |
| 3.0          | 2.94              | 26.1° | 23     | 23    |

— C0/C180 (Half-peak divergence: 52.4°)  
— C90/C270 (Half-peak divergence: 52.2°)

### Clase de eficiencia energética

Este producto contiene una fuente de luz de clase de eficiencia energética F.

### Características Luminotécnicas

|   |                |
|---|----------------|
| Light Output Ratio (LOR)                      | 59 %           |
| Flujo luminoso (fuente)                       | 738 lm         |
| Flujo luminoso de luminaria                   | 438 lm         |
| Consumption                                   | 8 W            |
| Rendimiento luminoso de las luminarias        | 54 lm/W        |
| Temperatura de color                          | 3000 K         |
| Standard Deviation of Colour Matching         | 3 Step MacAdam |
| Índice de rendimientos cromático              | 90 Ra          |
| Black Body Locus                              | On             |
| Temperatura estándar del ambiente de servicio | -20 / +50°C    |
| Temperatura típica sobre el vidrio            | 40°C           |

### LED Life / Failure Ratio

L70 B10 C0 247450h (at Tj 60 Ta 25 )

### UGR

|                   |          |
|-------------------|----------|
| UGR axial         | 21.3     |
| UGR transversal   | 21.3     |
| X=4H   Y=8H       | S=0.25H  |
| Reflection factor | 70/50/20 |

### OPTICAL

|                             |             |
|-----------------------------|-------------|
| Óptica C0/C180              | 52°         |
| Light distribution symmetry | Symmetrical |

### COLOR VECTOR GRAPHIC





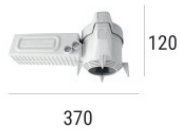
Caja de empotrar

posición de instalación: techo; tipo instalación: albañilería L=200mm, H=113mm, D=137mm.

Material:polipropileno, color:blanco.

**Code**

89373



Caja de empotrar

posición de instalación: techo; tipo instalación: albañilería L=370mm, H=120mm, D=200mm.

Material:polipropileno, color:blanco.

**Code**

89374