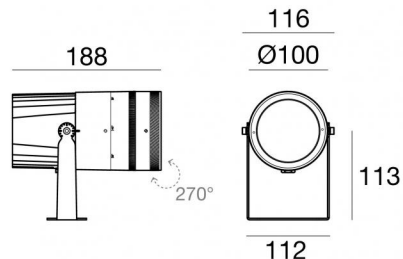


# Iris67 Elliptic



Proyectores | 1 arrayLED 30 W DC 840 mA | CRI 80  
84558M88



| Datos técnicos  |                           |
|---|---------------------------|
| Tipo  | Superficie                |
| Posición de instalación                                   | Pared - Techo - Piso      |
| Ambiente de instalación                                   | Exteriores                |
| Fuente de luz   | LED                       |
| Circuit structure   | arrayLED                  |
| Óptica  | Adjustable Focus Elliptic |
| Light emission direction                                  | frontal                   |
| Potencia nominal  | 30 W DC                   |
| Flujo luminoso (fuente)                                   | 4452 lm                   |
| Rango de voltaje de entrada                               | 840mA                     |
| CCT / Tone  | 2700 K                    |
| Índice de rendimientos cromático                          | 80 Ra                     |
| C.C. / C.V.   | CC                        |
| Clase de aislamiento                                      | 3                         |
| IP  | IP67                      |
| IK  | IK10                      |
| Test del hilo incandescente                               | 850°                      |
| Montaje directo sobre superficies normalmente inflamables | Sí                        |
| CE  | Sí                        |
| Driver incluido.  | No                        |
| Artículo regulable  | DALI - 1-10V              |
| Orientabilidad  | Orientabile               |
| ángulo total (plano vertical)                             | 270 °                     |
| Basculación   | No                        |
| Practicabilidad   | No                        |
| Transitabilidad   | No                        |
| Cable incluido.   | Sí                        |
| Largo del cable   | 1 m                       |
| Resinado  | Sí                        |
| Tipología de emisión luminosa                             | Una emisión               |
| Peso neto   | 2 Kg                      |
| Protección descargas electrostáticas                      | No                        |
| Protección contra sobretensiones                          | No                        |
| Características tecnológicas del producto                 | Acquastop                 |

## Acabado cuerpo

|             |   |
|-------------|---|
| Material    | Aluminio fundido EN AB - 46100                |
| Color       | Blanco  |
| Elaboración | Anodizado de poro abierto + pintado con polvo |

## Acabado difusor

|          |                               |
|----------|-------------------------------|
| Material | Vidrio extra claro - templado |
| Color    | transparente                  |

## Acabado abrazadera

|             |                        |
|-------------|------------------------|
| Material    | Acero AISI 316         |
| Color       | Blanco                 |
| Elaboración | Recubrimiento en polvo |

## Electrónica



99269  
On/Off Driver 198-264V AC (1 art.)



Proyectores | 1 arrayLED 30 W DC 840 mA | CRI 80 | Ángulo óptico máximo  
**84558M88**

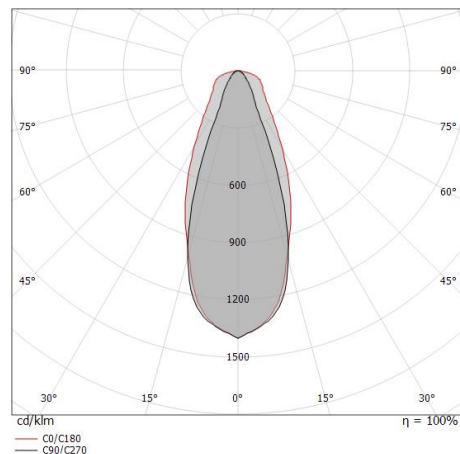
Single emission projectors for outdoor application. The super warm white LED light source with a adjustable focus elliptic light distribution is composed of 1 arrayed LEDs with CCT of 2700 K and a CRI 80; the source luminous flux is 4452 lm, with a 148.4 lm/W nominal luminous efficacy.

The device body is made of die-cast aluminium en ab - 46100 and features a white finish, processed by means of open pore anodizing + powder coating; the diffuser is made of extra clear glass - tempered. The ingress protection degree is IP67; the total weight is of 2 kg. The power supply driver is not provided and is to be ordered separately.

The total absorbed power is 30 W. The power supply cable is included and features a 1 m length.

The device features protection class III and can be wall lights, ceiling or floor-mounted.

Compliant with the EN 60598-1 standard and its specific provisions.



| Distance [m] | Cone diameter [m] | E(0°) | E(C90) | E(C0) |
|--------------|-------------------|-------|--------|-------|
| 0.5          | 0.35<br>0.42      | 6999  | 2937   | 2736  |
| 1.0          | 0.71<br>0.85      | 1750  | 734    | 684   |
| 1.5          | 1.06<br>1.27      | 778   | 326    | 304   |
| 2.0          | 1.42<br>1.70      | 437   | 184    | 171   |
| 2.5          | 1.77<br>2.12      | 280   | 117    | 109   |
| 3.0          | 2.12<br>2.55      | 194   | 82     | 76    |

— C0/C180 (Half-peak divergence: 46.0°)  
 — C90/C270 (Half-peak divergence: 39.0°)

## Clase de eficiencia energética

Este producto contiene una fuente de luz de clase de eficiencia energética E.

## Características Luminotécnicas

|   |                |
|---|----------------|
| Light Output Ratio (LOR)                      | 29 %           |
| Flujo luminoso (fuente)                       | 4452 lm        |
| Flujo luminoso de luminaria                   | 1318 lm        |
| Consumption                                   | 30 W           |
| Rendimiento luminoso de las luminarias        | 43 lm/W        |
| Temperatura de color                          | 2700 K         |
| Standard Deviation of Colour Matching         | 2 Step MacAdam |
| Índice de rendimientos cromático              | 80 Ra          |
| Temperatura estándar del ambiente de servicio | -20 / +50°C    |
| Temperatura típica sobre el vidrio            | 40°C           |

## LED Life / Failure Ratio

L70 B10 C0 252000h (at Tj 65 Ta 25 )

## UGR

|                   |          |
|-------------------|----------|
| UGR transversal   | 30.7     |
| UGR axial         | 20.9     |
| X=4H   Y=8H       | S=0.25H  |
| Reflection factor | 70/50/20 |

## OPTICAL

|                             |                     |
|-----------------------------|---------------------|
| Óptica C0/C180              | 46°                 |
| Óptica C90/C270             | 39°                 |
| Light distribution simmetry | Symmetrical 2 assis |

# Iris67 Elliptic



Proyectores | 1 arrayLED 30 W DC 840 mA | CRI 80 | Ángulo óptico

módulo

**84558M88**

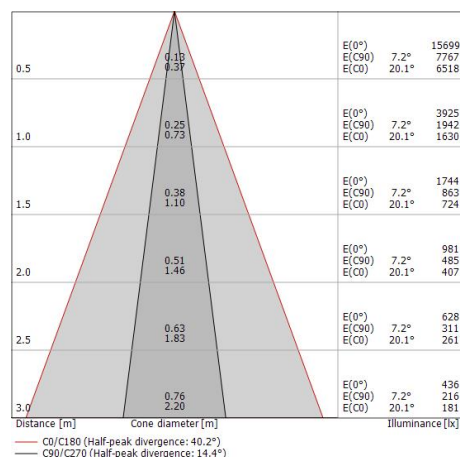
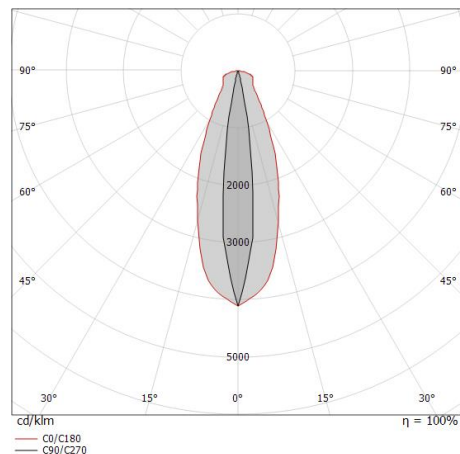
Single emission projectors for outdoor application. The super warm white LED light source with a adjustable focus elliptic light distribution is composed of 1 arrayed LEDs with CCT of 2700 K and a CRI 80; the source luminous flux is 4452 lm, with a 148.4 lm/W nominal luminous efficacy.

The device body is made of die-cast aluminium en ab - 46100 and features a white finish, processed by means of open pore anodizing + powder coating; the diffuser is made of extra clear glass - tempered. The ingress protection degree is IP67; the total weight is of 2 kg. The power supply driver is not provided and is to be ordered separately.

The total absorbed power is 30 W. The power supply cable is included and features a 1 m length.

The device features protection class III and can be wall lights, ceiling or floor-mounted.

Compliant with the EN 60598-1 standard and its specific provisions.



## Clase de eficiencia energética

Este producto contiene una fuente de luz de clase de eficiencia energética E.

## Características Luminotécnicas

|   |                |
|---|----------------|
| Light Output Ratio (LOR)                      | 22 %           |
| Flujo luminoso (fuente)                       | 4452 lm        |
| Flujo luminoso de luminaria                   | 1008 lm        |
| Consumption                                   | 30 W           |
| Rendimiento luminoso de las luminarias        | 33 lm/W        |
| Temperatura de color                          | 2700 K         |
| Standard Deviation of Colour Matching         | 2 Step MacAdam |
| Índice de rendimientos cromático              | 80 Ra          |
| Temperatura estándar del ambiente de servicio | -20 / +50°C    |
| Temperatura típica sobre el vidrio            | 40°C           |

## LED Life / Failure Ratio

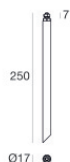
L70 B10 C0 252000h (at Tj 65 Ta 25)

## UGR

|                   |          |
|-------------------|----------|
| UGR transversal   | 32.5     |
| UGR axial         | 11.4     |
| X=4H   Y=8H       | S=0.25H  |
| Reflection factor | 70/50/20 |

## OPTICAL

|                             |                     |
|-----------------------------|---------------------|
| Óptica C0/C180              | 40°                 |
| Óptica C90/C270             | 14°                 |
| Light distribution simmetry | Symmetrical 2 assis |



Piquete - L. 250mm  
posición de instalación: terreno,Material de revestimiento: acero aisi 304

**Code**  
84890



Piquete - L. 700mm  
posición de instalación: terreno,Material de revestimiento: acero aisi 304

**Code**  
98112



Piquete - L. 1000mm  
posición de instalación: terreno,Material de revestimiento: acero aisi 304

**Code**  
C-F500001