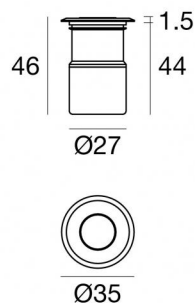
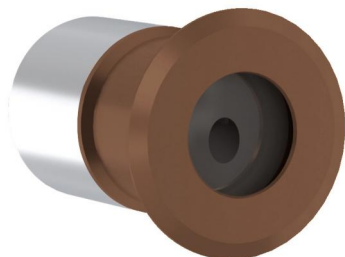




Luminaria de pared | 1 x powerLEDs 1.5 W DC 24 V
CRI 90

84076N07



Datos técnicos

| | |
|---|--------------------------------|
| Tipo | 1 x powerLEDs 1.5 W DC 24 V |
| Posición de instalación | Piso |
| Ambiente de instalación | Exteriores |
| Fuente de luz | LED |
| Circuit structure | powerLEDs |
| Óptica | Asymmetric Wallwasher |
| Light emission direction | upward |
| Potencia nominal | 1.5 W DC |
| Flujo luminoso (fuente) | 213 lm |
| Rango de voltaje de entrada | 24 V |
| CCT / Tone | 4000 K |
| Índice de rendimientos cromático | 90 Ra |
| C.C. / C.V. | CV |
| Clase de aislamiento | 3 |
| IP | IP66 |
| IK | IK05 |
| Test del hilo incandescente | 850° |
| Montaje directo sobre superficies normalmente inflamables | Sí |
| CE | Sí |
| Driver incluido. | No |
| C.V. - C.C. Converter | Convertidor 24V incluido |
| Artículo regulable | DALI - 1-10V |
| Orientabilidad | No |
| Basculación | No |
| Practicabilidad | Sí |
| Transitabilidad | No |
| Cable incluido. | Sí |
| Largo del cable | 1 m |
| Resinado | Sí |
| Tipología de emisión luminosa | Una emisión |
| Peso neto | 0.174 Kg |
| Protección descargas electrostáticas | No |
| Protección contra sobretensiones | No |
| Características tecnológicas del producto | TVS |

Acabado cuerpo

| | |
|-------------|------------------------|
| Material | Latón OT58 |
| Color | Dark brown |
| Elaboración | Recubrimiento en polvo |

Acabado base

| | |
|----------|----------------------|
| Material | Acero inoxidable 316 |
| Color | acero |

Electrónica



89488
On/Off Driver 190~250V AC / 180~275V DC 15 W (1 - 9 art.)



89179
On/Off Driver 198~264V AC 24 W (1 - 16 art.)



89359
On/Off Driver 198~264V AC / 180~275V DC 48 W (1 - 32 art.)



99331
On/Off Driver 198~264V AC / 180~275V DC 150 W (1 art.)



99660
DALI - 1-10V Controller 24V DC 216 W (1 art.)



C-E500023
DALI - 1-10V - Push and Simply Dim Controller 8~53V DC 576 W (1 art.)

Cables Electrificación

| | |
|-----------------|----|
| Cable connector | No |
|-----------------|----|



Luminaria de pared | 1 x powerLEDs 1.5 W DC 24 V | CRI 90 84076N07

Single emission wall lights for outdoor application. The natural white LED light source with a asymmetric wallwasher light distribution is composed of 1 powered LEDs with CCT of 4000 K and a CRI 90; the source luminous flux is 213 lm, with a 142.0 lm/W nominal luminous efficacy.

The device body is made of ot58 brass and features a dark brown finish, processed by means of powder coating. The ingress protection degree is IP66; the total weight is of 0.174 kg.

The total absorbed power is 1.5 W. The power supply cable is included and features a 1 m length.

The device features protection class III and can be floor-mounted with an outer casing, code 84918(for concrete or masonry).

Compliant with the EN 60598-1 standard and its specific provisions.

Clase de eficiencia energética

Este producto contiene una fuente de luz de clase de eficiencia energética E.

Características Luminotécnicas

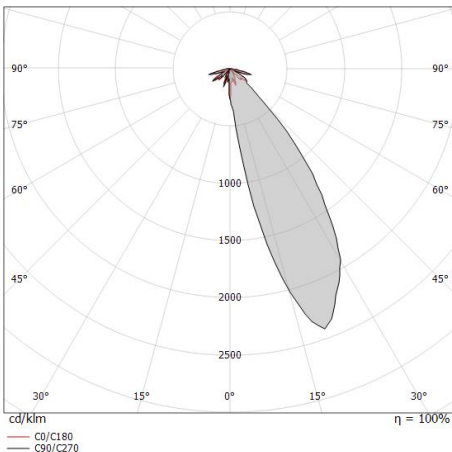
| | |
|---|----------------|
| Light Output Ratio (LOR) | 4 % |
| Flujo luminoso (fuente) | 213 lm |
| Flujo luminoso de luminaria | 9 lm |
| Consumption | 1,5 W |
| Rendimiento luminoso de las luminarias | 9 lm/W |
| Temperatura de color | 4000 K |
| Standard Deviation of Colour Matching | 3 Step MacAdam |
| Índice de rendimientos cromático | 90 Ra |
| Temperatura estándar del ambiente de servicio | -20 / +50°C |
| Temperatura típica sobre el vidrio | 40°C |

LED Life / Failure Ratio

L70 B20 C0 214455h (at Tj 60 Ta 25)

OPTICAL

| | |
|-----------------------------|--------------|
| Óptica C0/C180 | 154° |
| Light distribution simmetry | Asymmetrical |



| Distance [m] | Cone diameter [m] | E(0°) E(C0) | 77.2° | 90 |
|--------------|-------------------|----------------|-------|----|
| 0.5 | 4.40 | E(0°) E(C0) | 77.2° | 90 |
| 1.0 | 8.80 | E(0°) E(C0) | 77.2° | 20 |
| 1.5 | 13.20 | E(0°) E(C0) | 77.2° | 10 |
| 2.0 | 17.61 | E(0°) E(C0) | 77.2° | 10 |
| 2.5 | 22.01 | E(0°) E(C0) | 77.2° | 00 |
| 3.0 | 26.41 | E(0°) E(C0) | 77.2° | 00 |

Distance [m] Cone diameter [m] Illuminance [lx]

— C0/C180 (Half-peak divergence: 154.4°)



Quara_R | Step Lights | Accessories
84076N07



Caja de empotrar

posición de instalación: piso; tipo instalación: albañilería L=87mm, H=60mm, D=60mm.

Material:Plástico ABS, color:negro.

Code

84918