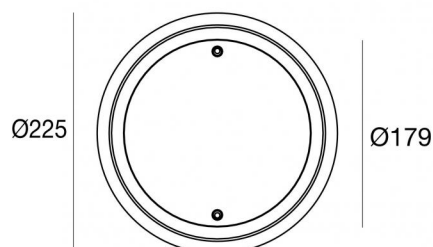
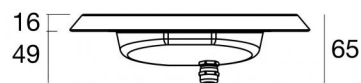




Sumergible | 9 x powerLEDs 38 W DC 12 V | CRI 80
84042W20



| Datos técnicos | |
|---|-------------------|
| Tipo | Frame |
| Posición de instalación | Pared - Piso |
| Ambiente de instalación | Exteriores |
| Fuente de luz | LED |
| Circuit structure | powerLEDs |
| Óptica | Flood |
| Light emission direction | frontal |
| Potencia nominal | 38 W DC |
| Flujo luminoso (fuente) | 4563 lm |
| Rango de voltaje de entrada | 12V |
| CCT / Tone | 3000 K |
| Índice de rendimientos cromático | 80 Ra |
| C.C. / C.V. | CV |
| Clase de aislamiento | 3 |
| IP | IP68 |
| Profundidad máxima de instalación | 25 m |
| Restricciones de instalación | Solo bajo el agua |
| IK | IK10 |
| Test del hilo incandescente | 850° |
| Montaje directo sobre superficies normalmente inflamables | Sí |
| CE | Sí |
| Driver incluido. | No |
| Artículo regulable | DALI - 1-10V |
| Orientabilidad | No |
| Basculación | No |
| Practicabilidad | No |
| Transitabilidad | No |
| Cable incluido. | Sí |
| Largo del cable | 5 m |
| Resinado | Sí |
| Tipología de emisión luminosa | Una emisión |
| Peso neto | 0.8 Kg |
| Protección descargas electrostáticas | No |
| Protección contra sobretensiones | No |
| Características tecnológicas del producto | Acquastop |

Acabado cuerpo

| | |
|----------|-----------------|
| Material | Acero AISI 316L |
| Color | acero |





Acabado difusor

| | |
|-------------|-------------------------------|
| Material | Vidrio extra claro - templado |
| Color | transparente |
| Elaboración | Serigrafía |

Acabado brida

| | |
|-------------|----------------------|
| Material | Acero inoxidable 316 |
| Color | acero |
| Elaboración | electropulido |

Electrónica

| | |
|---|--|
|  | 83010 On/Off Driver 90~264V AC / 127~370V DC 60 W (1 art.) |
|  | 83015 DALI Controller 90~305V AC / 127~431V DC 120 W (1 - 3 art.) |
|  | 83013 On/Off Driver 180~305V AC / 254~431V DC 120 W (1 - 3 art.) |
|  | 83012 DALI Controller 90~305V AC / 127~431V DC 60 W (1 art.) |



Sumergible | 9 x powerLEDs 38 W DC 12 V | CRI 80
84042W20

Single emission submerged for outdoor application. The warm white LED light source with a flood light distribution is composed of 9 powered LEDs with CCT of 3000 K and a CRI 80; the source luminous flux is 4563 lm, with a 120.1 lm/W nominal luminous efficacy.

The device body is made of aisi 316l steel and features a steel finish; the diffuser is made of extra clear glass - tempered with a silk-screening treatment. The ingress protection degree is IP68; the total weight is of 0.8 kg. The power supply driver is not provided and is to be ordered separately.

The total absorbed power is 38 W. The power supply cable is included and features a 5 m length.

The device features protection class III and can be wall lights or floor-mounted with an outer casing, code 83198(for concrete or masonry).

Compliant with the EN 60598-1 standard and its specific provisions.

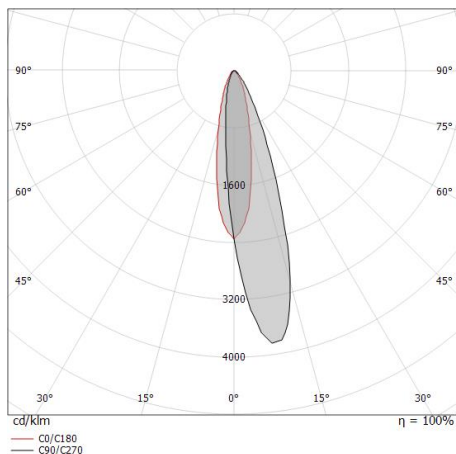
| Clase de eficiencia energética | |
|--|--|
| Este producto contiene 3 fuentes de luz de clase de eficiencia energética E. | |

| Características Luminotécnicas | |
|--|----------------|
| Light Output Ratio (LOR) | 74 % |
| Flujo luminoso (fuente) | 4563 lm |
| Flujo luminoso de luminaria | 3421 lm |
| Consumption | 38 W |
| Rendimiento luminoso de las luminarias | 90 lm/W |
| Temperatura de color | 3000 K |
| Standard Deviation of Colour Matching | 3 Step MacAdam |
| Índice de rendimientos cromático | 80 Ra |

| | |
|---|-------------|
| Temperatura estándar del ambiente de servicio | -20 / +50°C |
| Temperatura típica sobre el vidrio | 40°C |

| LED Life / Failure Ratio | |
|--------------------------------------|--|
| L70 B10 C0 250000h (at Tj 65 Ta 25) | |

| OPTICAL | |
|-----------------------------|--------------|
| Óptica C0/C180 | 23° |
| Light distribution symmetry | Asymmetrical |



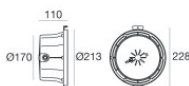
| | | | | |
|-----|------|----------------|-------|----------------|
| 0.5 | 0.21 | E(0°) E(C0) | 11.7° | 32173 15176 |
| 1.0 | 0.41 | E(0°) E(C0) | 11.7° | 8043 3794 |
| 1.5 | 0.62 | E(0°) E(C0) | 11.7° | 3575 1686 |
| 2.0 | 0.83 | E(0°) E(C0) | 11.7° | 2011 948 |
| 2.5 | 1.04 | E(0°) E(C0) | 11.7° | 1287 607 |
| 3.0 | 1.24 | E(0°) E(C0) | 11.7° | 894 422 |

Distance [m] Cone diameter [m] Illuminance [lx]

— C0/C180 (Half-peak divergence: 23.4°)

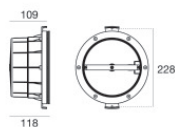
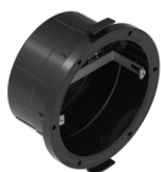


Nautilus_R | Submerged | Accessories
84042W20



Caja de empotrar - Envoltorio IP68 para instalación en mampostería (baldosas o mosaico)
posición de instalación: pared; tipo instalación: albañilería L=213mm, H=213mm,
D=110mm.
Material:Plástico ABS, color:negro.

Code
83142



Caja de empotrar - Carcasa exterior para instalación sobre lienzo
posición de instalación: pared; tipo instalación: albañilería L=213mm, H=213mm,
D=110mm.
Material:Plástico ABS, color:negro.

Code
83198