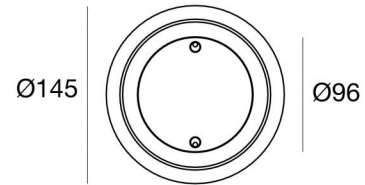
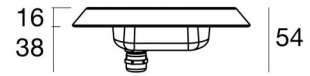




Sumergible | 3 x powerLEDs 13 W DC 350 mA
 RGBW - 4000
84036Q20





| Datos técnicos | |
|---|-------------------|
| Tipo | Frame |
| Posición de instalación | Pared - Piso |
| Ambiente de instalación | Exteriores |
| Fuente de luz | LED |
| Circuit structure | powerLEDs |
| Óptica | Flood |
| Light emission direction | frontal |
| Potencia nominal | 13 W DC |
| Rango de voltaje de entrada | 350mA |
| CCT / Tone | RGBW - 4000 K |
| C.C. / C.V. | CC |
| Clase de aislamiento | 3 |
| IP | IP68 |
| Profundidad máxima de instalación | 25 m |
| Restricciones de instalación | Solo bajo el agua |
| IK | IK10 |
| Test del hilo incandescente | 850° |
| Montaje directo sobre superficies normalmente inflamables | Sí |
| CE | Sí |
| Driver incluido. | No |
| Artículo regulable | Sí |
| Orientabilidad | No |
| Basculación | No |
| Practicabilidad | No |
| Transitabilidad | No |
| Cable incluido. | Sí |
| Largo del cable | 5 m |
| Resinado | Sí |
| Tipología de emisión luminosa | Una emisión |
| Peso neto | 1.9 Kg |
| Protección descargas electrostáticas | No |
| Protección contra sobretensiones | No |
| Características tecnológicas del producto | Acquastop |

| Acabado cuerpo | |
|----------------|-----------------|
| Material | Acero AISI 316L |
| Color | acero |

| Acabado difusor | |
|-----------------|-------------------------------|
| Material | Vidrio extra claro - templado |
| Color | transparente |
| Elaboración | Serigrafía |

| Acabado brida | |
|---------------|----------------------|
| Material | Acero inoxidable 316 |
| Color | acero |
| Elaboración | electropulido |

| Electrónica | |
|---|---|
|  | 83010 On/Off Driver 90~264V AC / 127~370V DC 60 W (1 - 4 art.) |

| | |
|---|--|
|  | 83187 Push and Simply Dim - DMX-RDM Multi Channel 4ch. 10.8~52.8V DC (1 art.) |
|---|--|

| Lumen RGBW | | | | |
|------------|--------|--------|--------|--------|
| N. Led | Rojo | Verde | Azul | blanco |
| 3 | 135 lm | 312 lm | 105 lm | 402 lm |



Sumergible | 3 x powerLEDs 13 W DC 350 mA | RGBW - 4000
84036Q20

Single emission submerged for outdoor application. The RGBW - 4000 K LED light source with a flood light distribution is composed of 3 powered LEDs with CCT of RGB-W 4000 K.

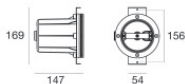
The device body is made of aisi 316l steel and features a steel finish; the diffuser is made of extra clear glass - tempered with a silk-screening treatment. The ingress protection degree is IP68; the total weight is of 1.9 kg. The power supply driver is not provided and is to be ordered separately.

The total absorbed power is 13 W. The power supply cable is included and features a 5 m length.

The device features protection class III and can be wall lights or floor-mounted with an outer casing, code 83197(for concrete or masonry).

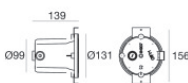
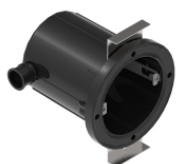
Compliant with the EN 60598-1 standard and its specific provisions.

| | |
|---|-------------|
| Temperatura estándar del ambiente de servicio | -20 / +50°C |
| Temperatura típica sobre el vidrio | 40°C |



Caja de empotrar - Carcasa exterior para instalación sobre lienzo
posición de instalación: pared; tipo instalación: albañilería L=131mm, H=131mm,
D=139mm.
Material:Plástico ABS, color:negro.

Code
83197



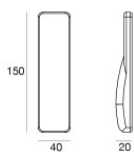
Caja de empotrar - Envoltente IP68 para instalación en mampostería (baldosas o mosaico)
posición de instalación: pared; tipo instalación: albañilería L=131mm, H=131mm,
D=139mm.
Material:Plástico ABS, color:negro.

Code
83141



Regulador de intensidad
RF Remote controller

Code
C-E700003



Control remoto por radiofrecuencia

Code
C-W600001