





## Uplights | 4 x powerLED 9 W DC 24 V | CRI 80 83643N18

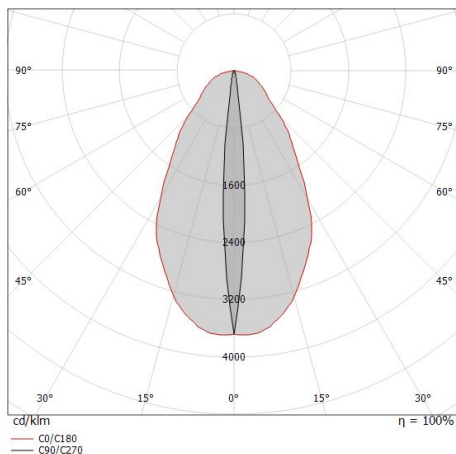
Single emission uplights for outdoor application. The natural white LED light source with a elliptic narrow spot (wall grazing) light distribution is composed of 4 powerleds LEDs with CCT of 4000 K and a CRI 80; the source luminous flux is 922 lm, with a 102.4 lm/W nominal luminous efficacy.

The device body is made of die-cast aluminium en ab - 46100 and features a black finish, processed by means of open pore anodizing + powder coating; the diffuser is made of extra clear glass - tempered with a silk-screening treatment. The ingress protection degree is IP68; the total weight is of 0.5 kg.

The total absorbed power is 9 W. The power supply cable is included and features a 1 m length.

The device features protection class III and can be floor-mounted with an outer casing, code 99856(for concrete or masonry).

Compliant with the EN 60598-1 standard and its specific provisions.



Distance [m]	Cone diameter [m]	illuminance [lx]
0.5	0.08 0.62	E(0°) 3462 E(C90) 1744 E(C0) 1065
1.0	0.16 1.24	E(0°) 866 E(C90) 436 E(C0) 266
1.5	0.24 1.87	E(0°) 385 E(C90) 194 E(C0) 118
2.0	0.32 2.49	E(0°) 216 E(C90) 109 E(C0) 67
2.5	0.40 3.11	E(0°) 138 E(C90) 70 E(C0) 43
3.0	0.48 3.73	E(0°) 96 E(C90) 48 E(C0) 30

— C0/C180 (Half-peak divergence: 63.8°)  
— C90/C270 (Half-peak divergence: 9.2°)

### Clase de eficiencia energética

Este producto contiene una fuente de luz de clase de eficiencia energética E.

### Características Luminotécnicas

Light Output Ratio (LOR)	25 %
Flujo luminoso (fuente)	922 lm
Flujo luminoso de luminaria	235 lm
Consumption	9 W
Rendimiento luminoso de las luminarias	26 lm/W
Temperatura de color	4000 K
Standard Deviation of Colour Matching	3 Step MacAdam
Índice de rendimientos cromático	80 Ra

Temperatura estándar del ambiente de servicio	-20 / +50°C
Temperatura típica sobre el vidrio	40°C

### LED Life / Failure Ratio

L70 B10 C0 60500h

### UGR

UGR axial	12.2
UGR transversal	29.1
X=4H   Y=8H	S=0.25H
Reflection factor	70/50/20

### OPTICAL

Óptica C90/C270	9°
Óptica C0/C180	64°
Light distribution simmetry	Symmetrical 2 assis



Orma\_AB | Effects | Accessories  
83643N18



Caja de empotrar

posición de instalación: piso; tipo instalación: albañilería L=114mm, H=78mm, D=114mm.

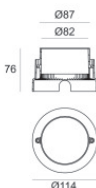
Material:Acero AISI 316, color:acero.

Finish



Code

99563



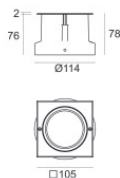
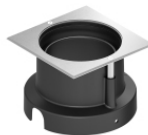
Caja de empotrar

posición de instalación: piso; tipo instalación: albañilería L=114mm, H=76mm, D=114mm.

Material:Plástico ABS, color:negro.

Code

99651



Caja de empotrar

posición de instalación: piso; tipo instalación: albañilería L=105mm, H=76mm, D=105mm.

Material:Plástico ABS, color:negro.

Code

99856