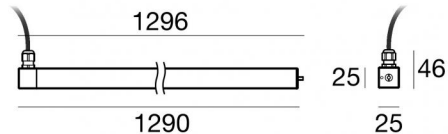
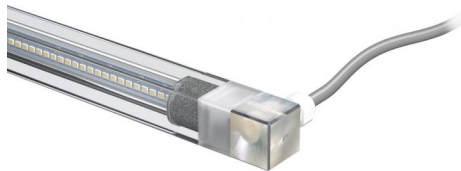




Sumergible | 228 topLED 20 W DC 12 V | CRI 80
82652N30



Datos técnicos	
Tipo	Superficie
Posición de instalación	Pared
Ambiente de instalación	Exteriores
Fuente de luz	LED
Circuit structure	topLED
Óptica	Extra Wide Flood
Light emission direction	frontal
Potencia nominal	20 W DC
Flujo luminoso (fuente)	3076 lm
Rango de voltaje de entrada	12V
CCT / Tone	4000 K
Índice de rendimientos cromático	80 Ra
C.C. / C.V.	CV
Clase de aislamiento	3
IP	IP68
Profundidad máxima de instalación	25 m
IK	IK08
Test del hilo incandescente	850°
Montaje directo sobre superficies normalmente inflamables	Sí
CE	Sí
Driver incluido.	No
Artículo regulable	DALI - 1-10V
Orientabilidad	Orientabile
ángulo total (plano vertical)	360 °
Basculación	No
Practicabilidad	No
Transitabilidad	No
Cable incluido.	Sí
Largo del cable	5 m
Resinado	Sí
Tipología de emisión luminosa	Una emisión
Peso neto	0.62 Kg
Protección descargas electrostáticas	No
Protección contra sobretensiones	No
Características tecnológicas del producto	Acquastop - UV Resistant


Acabado cuerpo


Material	Acero AISI 316L
Color	acero


Acabado difusor


Material	Policarbonato resistente a los rayos UV
Color	transparente

Electrónica

	83010 On/Off Driver 90~264V AC / 127~370V DC 60 W (1 - 3 art.)
---	---

	83015 DALI Controller 90~305V AC / 127~431V DC 120 W (1 - 6 art.)
---	--

	83013 On/Off Driver 180~305V AC / 254~431V DC 120 W (1 - 6 art.)
---	---

	83012 DALI Controller 90~305V AC / 127~431V DC 60 W (1 - 3 art.)
---	---

Cables Electrification

Cable connector	No
-----------------	----



Sumergible | 228 topLED 20 W DC 12 V | CRI 80
82652N30

Single emission submerged for outdoor application. The natural white LED light source with a extra wide flood light distribution is composed of 228 topLED LEDs with CCT of 4000 K and a CRI 80; the source luminous flux is 3076 lm, with a 153.8 lm/W nominal luminous efficacy.

The device body is made of aisi 316l steel and features a steel finish; the diffuser is made of uv resistant polycarbonate. The ingress protection degree is IP68; the total weight is of 0.62 kg. The power supply driver is not provided and is to be ordered separately.

The total absorbed power is 20 W. The power supply cable is included and features a 5 m length.

The device features protection class III and can be wall lights-mounted with an outer casing, code 83023(for concrete or masonry).

Compliant with the EN 60598-1 standard and its specific provisions.

Clase de eficiencia energética

Este producto contiene 4 fuentes de luz de clase de eficiencia energética D.

Características Luminotécnicas

Light Output Ratio (LOR)	84 %
Flujo luminoso (fuente)	3076 lm
Flujo luminoso de luminaria	2600 lm
Consumption	20 W
Rendimiento luminoso de las luminarias	130 lm/W
Temperatura de color	4000 K
Standard Deviation of Colour Matching	3 Step MacAdam
Índice de rendimientos cromático	80 Ra

Temperatura estándar del ambiente de servicio -40 / +50°C

Temperatura típica sobre el vidrio 40°C

LED Life / Failure Ratio

L70 B10 C0 145770h (at Tj 65 Ta 25)

UGR

UGR axial 25.8

UGR transversal 22.3

X=4H | Y=8H S=0.25H

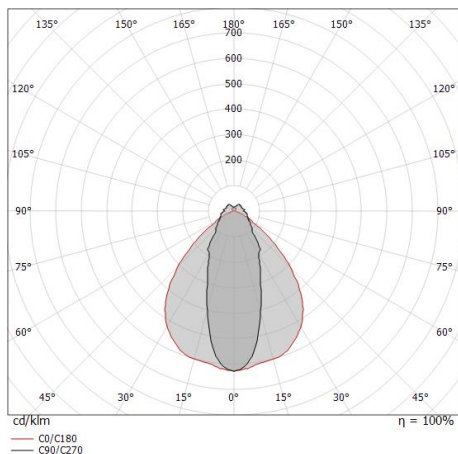
Reflection factor 70/50/20

OPTICAL

Óptica C90/C270 39°

Óptica C0/C180 90°

Light distribution simmetry Symmetrical 2 assis



Distance [m]	Cone diameter [m]	E(0°)	E(C90)	E(C0)	Iluminance [lx]
0.5	0.36 1.00	19.6°	45.0°	6526 2729 1154	
1.0	0.71 2.00	19.6°	45.0°	1632 682 289	
1.5	1.07 3.00	19.6°	45.0°	725 303 128	
2.0	1.42 4.00	19.6°	45.0°	408 171 72	
2.5	1.78 5.00	19.6°	45.0°	261 109 46	
3.0	2.14 6.00	19.6°	45.0°	181 76 32	

— C0/C180 (Half-peak divergence: 90.0°)
— C90/C270 (Half-peak divergence: 39.2°)



MK68_Q | Submerged | Accessories
82652N30



Conector - Conector gel 3 vías - IP68 Máx 3x1,5 mm²

Code
98991



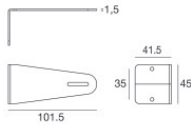
Conector - Conector de 3 vías - IP68 Min.3x0.5mm² / Max 3x1.5mm²

Code
84893



Conector

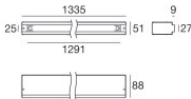
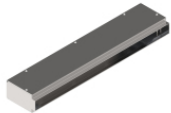
Code
89548



Soporte

posición de instalación: pared, techo, piso L=101.5mm, H=45mm, D=41.5mm.
 Material:Acero AISI 316, color:acero.

Finish
 **Code**
83020



Caja de empotrar

posición de instalación: piso; tipo instalación: albañilería L=1335mm, H=88mm, D=51mm.
 Material:Acero AISI 316, color:acero.

Finish
 **Code**
83023