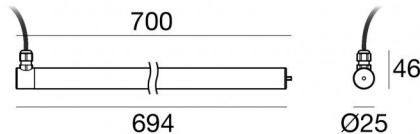


MK68_R



Sumergible | 114 topLED 11 W DC 12 V | CRI 80
82642W36



Datos técnicos	
Tipo	Superficie
Posición de instalación	Pared
Ambiente de instalación	Exteriores
Fuente de luz	LED
Circuit structure	topLED
Óptica	General Lighting
Light emission direction	frontal
Potencia nominal	11 W DC
Flujo luminoso (fuente)	1470 lm
Rango de voltaje de entrada	12V
CCT / Tone	3000 K
Índice de rendimientos cromático	80 Ra
C.C. / C.V.	CV
Clase de aislamiento	3
IP	IP68
Profundidad máxima de instalación	25 m
IK	IK08
Test del hilo incandescente	850°
Montaje directo sobre superficies normalmente inflamables	Sí
CE	Sí
Driver incluido.	No
Artículo regulable	DALI - 1-10V
Orientabilidad	No
Basculación	No
Practicabilidad	No
Transitabilidad	No
Cable incluido.	Sí
Largo del cable	5 m
Resinado	Sí
Tipología de emisión luminosa	Una emisión
Peso neto	0.45 Kg
Protección descargas electrostáticas	No
Protección contra sobretensiones	No
Características tecnológicas del producto	Acquastop - UV Resistant


Acabado cuerpo


Material	Acero AISI 316L
Color	acero


Acabado difusor


Material	Policarbonato resistente a los rayos UV
Color	transparente

Electrónica

	83010 On/Off Driver 90~264V AC / 127~370V DC 60 W (1 - 5 art.)
---	---

	83015 DALI Controller 90~305V AC / 127~431V DC 120 W (1 - 10 art.)
---	---

	83013 On/Off Driver 180~305V AC / 254~431V DC 120 W (1 - 10 art.)
---	--

	83012 DALI Controller 90~305V AC / 127~431V DC 60 W (1 - 5 art.)
---	---

Cables Electrification

Cable connector	No
-----------------	----



Sumergible | 114 topLED 11 W DC 12 V | CRI 80
82642W36

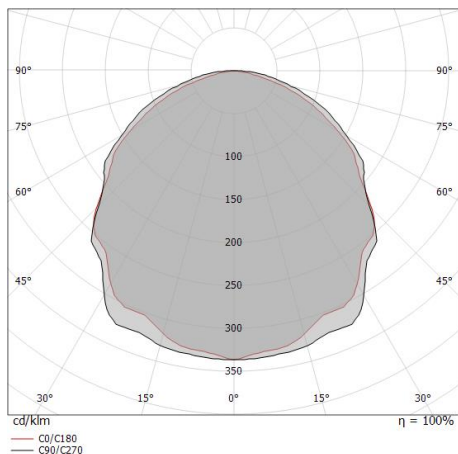
Single emission submerged for outdoor application. The warm white LED light source with a general lighting light distribution is composed of 114 topped LEDs with CCT of 3000 K and a CRI 80; the source luminous flux is 1470 lm, with a 133.6 lm/W nominal luminous efficacy.

The device body is made of aisi 316l steel and features a steel finish; the diffuser is made of uv resistant polycarbonate. The ingress protection degree is IP68; the total weight is of 0.45 kg. The power supply driver is not provided and is to be ordered separately.

The total absorbed power is 11 W. The power supply cable is included and features a 5 m length.

The device features protection class III and can be wall lights-mounted with an outer casing, code 83022(for concrete or masonry).

Compliant with the EN 60598-1 standard and its specific provisions.



Distance [m]	Cone diameter [m]		Illuminance [lx]		
0.5	1.56	1.46	E(0°)	1655	
			E(C90)	131	
1.0	3.12	2.91	E(0°)	414	
			E(C90)	33	
1.5	4.67	4.37	E(0°)	184	
			E(C90)	15	
2.0	6.23	5.82	E(0°)	103	
			E(C90)	8	
2.5	7.79	7.28	E(0°)	66	
			E(C90)	5	
3.0	9.35	8.73	E(0°)	46	
			E(C90)	4	

Distance [m] Cone diameter [m] Illuminance [lx]

— C0/C180 (Half-peak divergence: 111.0°)
- - C90/C270 (Half-peak divergence: 114.6°)

Clase de eficiencia energética

Este producto contiene 2 fuentes de luz de clase de eficiencia energética D.

Características Luminotécnicas

Light Output Ratio (LOR)	83 %
Flujo luminoso (fuente)	1470 lm
Flujo luminoso de luminaria	1228 lm
Consumption	11 W
Rendimiento luminoso de las luminarias	111 lm/W
Temperatura de color	3000 K
Standard Deviation of Colour Matching	3 Step MacAdam
Índice de rendimientos cromático	80 Ra

Temperatura estándar del ambiente de servicio -40 / +50°C

Temperatura típica sobre el vidrio 40°C

LED Life / Failure Ratio

L70 B10 C0 145770h (at Tj 65 Ta 25)

UGR

UGR axial 28.3

UGR transversal 27.2

X=4H | Y=8H S=0.25H

Reflection factor 70/50/20

OPTICAL

Óptica C90/C270 115°

Óptica C0/C180 111°

Light distribution simmetry Symmetrical 2 assis



MK68_R | Submerged | Accessories
82642W36



Conector - Conector gel 3 vías - IP68 Máx 3x1,5 mm²

Code
98991



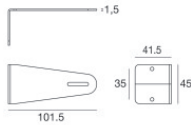
Conector - Conector de 3 vías - IP68 Min.3x0.5mm² / Max 3x1.5mm²

Code
84893



Conector

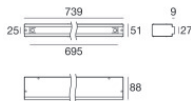
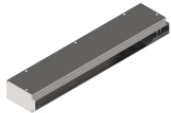
Code
89548



Soporte

posición de instalación: pared, techo, piso L=101.5mm, H=45mm, D=41.5mm.
Material:Acero AISI 316, color:acero.

Finish
 **Code**
83020



Caja de empotrar

posición de instalación: piso; tipo instalación: albañilería L=739mm, H=88mm, D=51mm.
Material:Acero AISI 316, color:acero.

Finish
 **Code**
83022