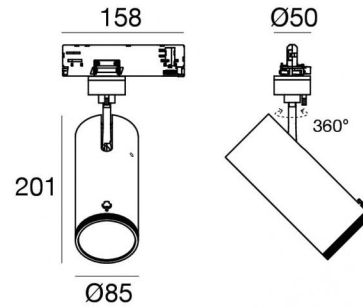


Pound_Focus



Proyectores | 198-264 V
1 arrayLED 32.5 W DC - 37 W AC | CRI 98
82449W85



| Datos técnicos | |
|---|------------------|
| Tipo | Carril |
| Posición de instalación | Techo |
| Ambiente de instalación | Interiores |
| Fuente de luz | LED |
| Circuit structure | arrayLED |
| Óptica | Adjustable Focus |
| Light emission direction | frontal |
| Potencia nominal | 32.5 W DC |
| Poder total | 37 W |
| Flujo luminoso (fuente) | 3450 lm |
| Tensión nominal de entrada | 220 - 240 V AC |
| Rango de voltaje de entrada | 198 - 264 V AC |
| Frequency | 50 - 60 Hz |
| CCT / Tone | 3000 K |
| Índice de rendimientos cromático | 98 Ra |
| C.C. / C.V. | AC |
| Clase de aislamiento | 2 |
| IP | IP20 |
| Test del hilo incandescente | 850° |
| Montaje directo sobre superficies normalmente inflamables | Sí |
| CE | Sí |
| Driver incluido. | driver |
| Artículo regulable | Dimming on Board |
| Orientabilidad | Orientabile |
| ángulo total (plano vertical) | 90 ° |
| ángulo total (plano horizontal) | 360 ° |
| Basculación | No |
| Practicabilidad | No |
| Transitabilidad | No |
| Cable incluido. | No |
| Resinado | No |
| Tipología de emisión luminosa | Una emisión |
| Peso neto | 0.92 Kg |
| Protección descargas electrostáticas | Sí |
| Protección contra sobretensiones | 2 KV |

| Acabado cuerpo | |
|----------------|--------------------------------|
| Material | Aluminio fundido EN AB - 46100 |
| Color | Negro |
| Elaboración | Recubrimiento en polvo |

Proyectores | 198-264 V | 1 arrayLED 32.5 W DC - 37 W AC | CRI 98 | Ángulo de apertura máximo 59.8°
82449W85

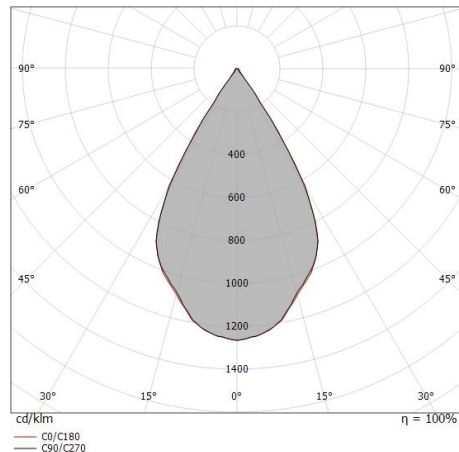
Single emission projectors for indoor application. The warm white LED light source with an adjustable focus light distribution is composed of 1 arrayed LEDs with CCT of 3000 K and a CRI 98; the source luminous flux is 3450 lm, with a 106.2 lm/W nominal luminous efficacy.

The device body is made of die-cast aluminium en ab - 46100 and features a black finish, processed by means of powder coating. The ingress protection degree is IP20; the total weight is of 0.92 kg.

The total absorbed power is 37 W.

The device features protection class II and can be ceiling-mounted.

Compliant with the EN 60598-1 standard and its specific provisions.



| Distance [m] | Cone diameter [m] | illuminance [lx] |
|--------------|-------------------|--|
| 0.5 | 0.58 0.57 | E(0°) 10274 E(C90) 3359 E(C0) 3389 |
| 1.0 | 1.15 1.14 | E(0°) 2568 E(C90) 840 E(C0) 847 |
| 1.5 | 1.73 1.71 | E(0°) 1142 E(C90) 373 E(C0) 377 |
| 2.0 | 2.30 2.28 | E(0°) 642 E(C90) 210 E(C0) 212 |
| 2.5 | 2.88 2.85 | E(0°) 411 E(C90) 134 E(C0) 136 |
| 3.0 | 3.45 3.42 | E(0°) 285 E(C90) 93 E(C0) 94 |

— C0/C180 (Half-peak divergence: 59.4°)
 — C90/C270 (Half-peak divergence: 59.8°)

Clase de eficiencia energética

Este producto contiene una fuente de luz de clase de eficiencia energética F.

Características Luminotécnicas

| | |
|---|----------------|
| Light Output Ratio (LOR) | 58 % |
| Flujo luminoso (fuente) | 3450 lm |
| Flujo luminoso de luminaria | 2031 lm |
| Consumption | 37 W |
| Rendimiento luminoso de las luminarias | 54 lm/W |
| Temperatura de color | 3000 K |
| Standard Deviation of Colour Matching | 2 Step MacAdam |
| Índice de rendimientos cromático | 98 Ra |
| Black Body Locus | On |
| Temperatura estándar del ambiente de servicio | -20 / +50°C |
| Temperatura típica sobre el vidrio | 40°C |

LED Life / Failure Ratio

L70 B10 C0 252000h (at Tj 65 Ta 25)

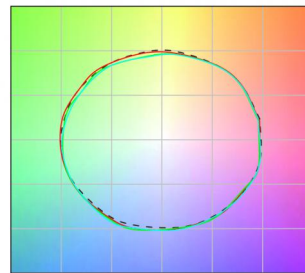
UGR

| | |
|-------------------|----------|
| UGR axial | 20.4 |
| UGR transversal | 20.3 |
| X=4H Y=8H | S=0.25H |
| Reflection factor | 70/50/20 |

OPTICAL

| | |
|-----------------------------|-------------|
| Óptica C0/C180 | 59° |
| Light distribution simmetry | Symmetrical |

COLOR VECTOR GRAPHIC





Proyectores | 198-264 V | 1 arrayLED 32.5 W DC - 37 W AC | CRI 98 | Ángulo

óptico míximo

82449W85

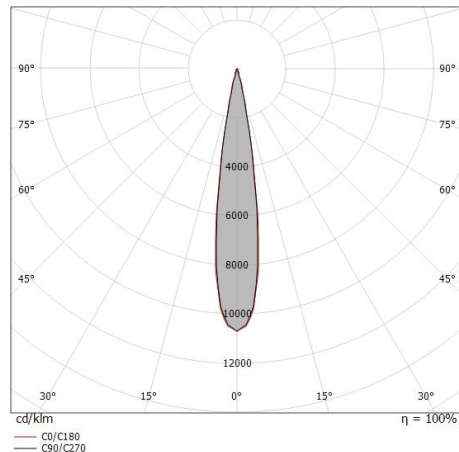
Single emission projectors for indoor application. The warm white LED light source with a adjustable focus light distribution is composed of 1 arrayed LEDs with CCT of 3000 K and a CRI 98; the source luminous flux is 3450 lm, with a 106.2 lm/W nominal luminous efficacy.

The device body is made of die-cast aluminium en ab - 46100 and features a black finish, processed by means of powder coating. The ingress protection degree is IP20; the total weight is of 0.92 kg.

The total absorbed power is 37 W.

The device features protection class II and can be ceiling-mounted.

Compliant with the EN 60598-1 standard and its specific provisions.



| Distance [m] | Cone diameter [m] | illuminance [lx] |
|--------------|-------------------|--|
| 0.5 | 0.15 0.15 | E(0°) 41693 E(C90) 20647 E(C0) 20229 |
| 1.0 | 0.29 0.30 | E(0°) 10423 E(C90) 5162 E(C0) 5057 |
| 1.5 | 0.43 0.45 | E(0°) 4633 E(C90) 2294 E(C0) 2248 |
| 2.0 | 0.58 0.60 | E(0°) 2606 E(C90) 1290 E(C0) 1264 |
| 2.5 | 0.72 0.75 | E(0°) 1668 E(C90) 826 E(C0) 809 |
| 3.0 | 0.86 0.90 | E(0°) 1158 E(C90) 574 E(C0) 562 |

— C0/C180 (Half-peak divergence: 17.0°)
— C90/C270 (Half-peak divergence: 16.4°)

Clase de eficiencia energética

Este producto contiene una fuente de luz de clase de eficiencia energética F.

Características Luminotécnicas

| | |
|---|----------------|
| Light Output Ratio (LOR) | 28 % |
| Flujo luminoso (fuente) | 3450 lm |
| Flujo luminoso de luminaria | 974 lm |
| Consumption | 37 W |
| Rendimiento luminoso de las luminarias | 26 lm/W |
| Temperatura de color | 3000 K |
| Standard Deviation of Colour Matching | 2 Step MacAdam |
| Índice de rendimientos cromático | 98 Ra |
| Black Body Locus | On |
| Temperatura estándar del ambiente de servicio | -20 / +50°C |
| Temperatura típica sobre el vidrio | 40°C |

LED Life / Failure Ratio

L70 B10 C0 252000h (at Tj 65 Ta 25)

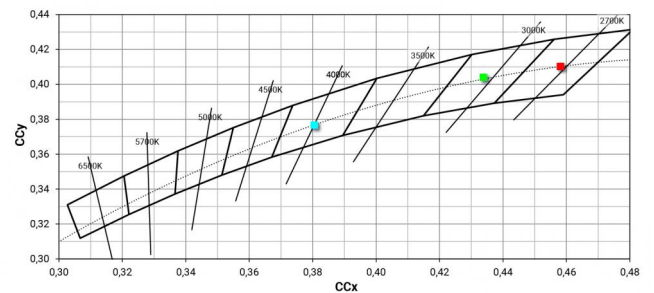
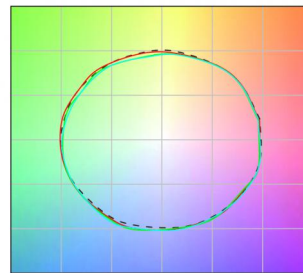
UGR

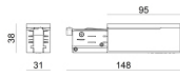
| | |
|-------------------|----------|
| UGR axial | 11 |
| UGR transversal | 11.1 |
| X=4H Y=8H | S=0.25H |
| Reflection factor | 70/50/20 |

OPTICAL

| | |
|-----------------------------|-------------|
| Óptica C0/C180 | 16° |
| Light distribution simmetry | Symmetrical |

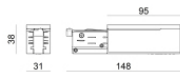
COLOR VECTOR GRAPHIC





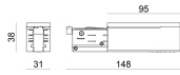
Fuente de alimentación
Material:PC, color:blanco.

Code
81033



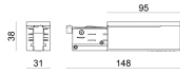
Fuente de alimentación
Material:PC, color:blanco.

Code
81036



Fuente de alimentación
Material:PC, color:negro.

Code
81037



Fuente de alimentación
Material:PC, color:negro.

Code
81034



Tapón
Material:PC, color:blanco.

Code
80999



Tapón
Material:PC, color:negro.

Code
81000



Tapón
Material:PC, color:blanco.

Code
81002



Tapón
Material:PC, color:negro.

Code
81003



Tapón
Material:blanco.

Code
81084



Tapón
Material:negro, color:negro.

Code
81085



Rosetón
Material:plástico, color:blanco.

Code
81012



Rosetón
Material:plástico, color:negro.

Code
81014



Rosetón
Material:plástico, color:blanco.

Code
81013



Rosetón
Material:plástico, color:negro.

Code
81015



Soporte
L=35mm, H=14mm, D=24mm.
Material:aluminio, color:pulido.

Finish
Anod. Al. **Code**
81086



Soporte
L=180mm, H=24mm, D=26mm.
Material:aluminio, color:Aluminio Anodizado, elaboración :Anodizado.

Finish
Code
81024



Soporte
L=180mm, H=24mm, D=20mm.
Material:aluminio, color:blanco RAL 9010, elaboración :Pintura.

| Finish | Code |
|--------|-------|
| White | 81025 |



Soporte
L=180mm, H=24mm, D=20mm.
Material:aluminio, color:negro RAL 9005, elaboración :Pintura.

| Finish | Code |
|--------|-------|
| Black | 81026 |



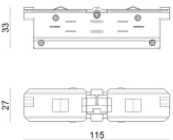
Soporte
L=35mm, H=14mm, D=24mm.
Material:aluminio, color:blanco, elaboración :Pintura.

| Finish | Code |
|--------|-------|
| White | 81087 |



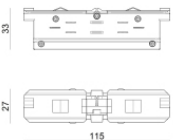
Soporte
L=35mm, H=14mm, D=24mm.
Material:aluminio, color:Negro, elaboración :Pintura.

| Finish | Code |
|--------|-------|
| Black | 81088 |



Unión
Tipo lineal.
Material:PC, color:blanco.

| Finish | Code |
|--------|-------|
| White | 81039 |



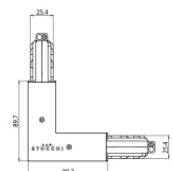
Unión
Tipo lineal.
Material:PC, color:negro.

| Finish | Code |
|--------|-------|
| Black | 81040 |



Unión
Tipo lineal.
Material:PC, color:blanco.

| Finish | Code |
|--------|-------|
| White | 81042 |



Unión
Tipo lineal.
Material:PC, color:blanco.

| Finish | Code |
|--------|-------|
| White | 81045 |



| | | | | |
|--|--|--|--------------------------------|------------------------------|
| | | <p>Unión Tipo linear. Material:PC, color:blanco.</p> | <p>Finish White</p> | <p>Code 81048</p> |
| | | <p>Unión Tipo flexible curve. Material:PC, color:blanco.</p> | <p>Finish White</p> | <p>Code 81066</p> |
| | | <p>Unión Tipo linear. Material:PC, color:blanco.</p> | <p>Finish White</p> | <p>Code 81063</p> |
| | | <p>Unión Tipo linear. Material:PC, color:blanco.</p> | <p>Finish White</p> | <p>Code 81051</p> |
| | | <p>Unión Tipo linear. Material:PC, color:blanco.</p> | <p>Finish White</p> | <p>Code 81054</p> |
| | | <p>Unión Tipo linear. Material:PC, color:blanco.</p> | <p>Finish White</p> | <p>Code 81057</p> |
| | | <p>Unión Tipo linear. Material:PC, color:blanco.</p> | <p>Finish White</p> | <p>Code 81060</p> |
| | | <p>Unión Tipo linear. Material:PC, color:negro.</p> | <p>Finish Black</p> | <p>Code 81043</p> |



| | | | | |
|--|--|---|-----------------------------------|---------------------------------|
| | | <p>Unión</p> <p>Tipo linear.</p> <p>Material:PC, color:negro.</p> | <p>Finish</p> <p>Black</p> | <p>Code</p> <p>81046</p> |
| | | <p>Unión</p> <p>Tipo linear.</p> <p>Material:PC, color:negro.</p> | <p>Finish</p> <p>Black</p> | <p>Code</p> <p>81049</p> |
| | | <p>Unión</p> <p>Tipo flexible curve.</p> <p>Material:PC, color:negro.</p> | <p>Finish</p> <p>Black</p> | <p>Code</p> <p>81067</p> |
| | | <p>Unión</p> <p>Tipo linear.</p> <p>Material:PC, color:negro.</p> | <p>Finish</p> <p>Black</p> | <p>Code</p> <p>81064</p> |
| | | <p>Unión</p> <p>Tipo linear.</p> <p>Material:PC, color:negro.</p> | <p>Finish</p> <p>Black</p> | <p>Code</p> <p>81052</p> |
| | | <p>Unión</p> <p>Tipo linear.</p> <p>Material:PC, color:negro.</p> | <p>Finish</p> <p>Black</p> | <p>Code</p> <p>81055</p> |
| | | <p>Unión</p> <p>Tipo linear.</p> <p>Material:PC, color:negro.</p> | <p>Finish</p> <p>Black</p> | <p>Code</p> <p>81058</p> |
| | | <p>Unión</p> <p>Tipo linear.</p> <p>Material:PC, color:negro.</p> | <p>Finish</p> <p>Black</p> | <p>Code</p> <p>81061</p> |



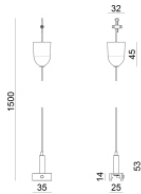
Colgantes
Material:plástico, color:blanco.

Code
81006



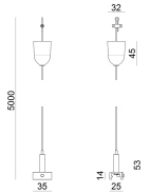
Colgantes
Material:plástico, color:blanco.

Code
81007



Colgantes
Material:plástico, color:negro.

Code
81008



Colgantes
Material:plástico, color:negro.

Code
81009



Colgantes
Material:plástico, color:blanco.

Code
81018



Colgantes
Material:plástico, color:negro.

Code
81019



Colgantes
Material:plástico, color:blanco.

Code
81021



Colgantes
Material:plástico, color:negro.

Code
81022



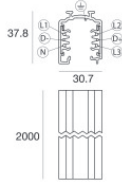
| | | | |
|--|--|---|-------------------------------------|
| | | <p>Cubierta de alambre Material:PC, color:blanco.</p> | <p>Code <u>81069</u></p> |
| | | <p>Cubierta de alambre Material:PC, color:blanco.</p> | <p>Code <u>81072</u></p> |
| | | <p>Cubierta de alambre Material:PC, color:blanco.</p> | <p>Code <u>81075</u></p> |
| | | <p>Cubierta de alambre Material:PC, color:blanco.</p> | <p>Code <u>81078</u></p> |
| | | <p>Cubierta de alambre Material:PC, color:blanco.</p> | <p>Code <u>81081</u></p> |
| | | <p>Cubierta de alambre Material:PC, color:negro.</p> | <p>Code <u>81070</u></p> |
| | | <p>Cubierta de alambre Material:PC, color:negro.</p> | <p>Code <u>81073</u></p> |
| | | <p>Cubierta de alambre Material:PC, color:negro.</p> | <p>Code <u>81076</u></p> |



| | | | |
|--|--|---|-------------------------------------|
| | | <p>Cubierta de alambre Material:PC, color:negro.</p> | <p>Code <u>81079</u></p> |
| | | <p>Cubierta de alambre Material:PC, color:negro.</p> | <p>Code <u>81082</u></p> |
| | | <p>Cubierta de alambre Material:blanco.</p> | <p>Code <u>83249</u></p> |
| | | <p>Cubierta de alambre Material:negro, color:negro.</p> | <p>Code <u>83250</u></p> |
| | | | <p>Code <u>81094</u></p> |
| | | | <p>Code <u>81091</u></p> |
| | | | <p>Code <u>81095</u></p> |
| | | | <p>Code <u>81093</u></p> |



| | | | |
|--|-------------|---|----------------------------------|
| | Herramienta | Code | |
| | | 81005 | |
| | | Carril Largo: 1000mm; Tipo carril: Standard. Material:aluminio, color:Blanco, elaboración :Pintura. | Finish White Code 80990 |
| | | Carril Largo: 2000mm; Tipo carril: Standard. Material:aluminio, color:Blanco, elaboración :Pintura. | Finish White Code 80991 |
| | | Carril Largo: 3000mm; Tipo carril: Standard. Material:aluminio, color:Blanco, elaboración :Pintura. | Finish White Code 80992 |
| | | Carril Largo: 1000mm; Tipo carril: Standard. Material:aluminio, color:Negro, elaboración :Pintura. | Finish Black Code 80993 |
| | | Carril Largo: 2000mm; Tipo carril: Standard. Material:aluminio, color:Negro, elaboración :Pintura. | Finish Black Code 80994 |
| | | Carril Largo: 3000mm; Tipo carril: Standard. Material:aluminio, color:Negro, elaboración :Pintura. | Finish Black Code 80995 |
| | | Carril Largo: 1000mm; Tipo carril: Standard. Material:aluminio, color:Blanco, elaboración :Pintura. | Finish White Code 83336 |



Carril

Largo: 2000mm; Tipo carril: Standard.

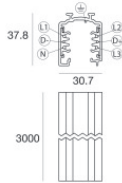
Material:aluminio, color:Blanco, elaboración :Pintura.

Finish

White

Code

83337



Carril

Largo: 3000mm; Tipo carril: Standard.

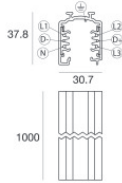
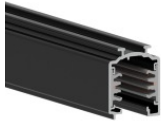
Material:aluminio, color:Blanco, elaboración :Pintura.

Finish

White

Code

83338



Carril

Largo: 1000mm; Tipo carril: Standard.

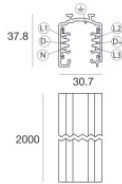
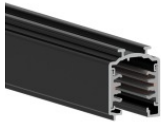
Material:aluminio, color:Negro, elaboración :Pintura.

Finish

Black

Code

83339



Carril

Largo: 2000mm; Tipo carril: Standard.

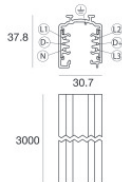
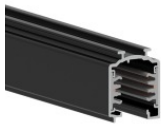
Material:aluminio, color:Negro, elaboración :Pintura.

Finish

Black

Code

83340



Carril

Largo: 3000mm; Tipo carril: Standard.

Material:aluminio, color:Negro, elaboración :Pintura.

Finish

Black

Code

83341