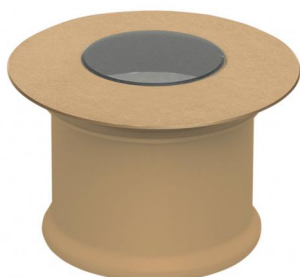


# Beret\_X Anti-glaring



Uplights | 1 x powerLED 1 W DC 350 mA | CRI 80  
81471N60





| Datos técnicos  |              |
|---|--------------|
| Tipo  | Frame        |
| Posición de instalación                                   | Piso         |
| Ambiente de instalación                                   | Exteriores   |
| Fuente de luz   | LED          |
| Circuit structure   | powerLED     |
| Óptica  | Wide Flood   |
| Light emission direction                                  | upward       |
| Potencia nominal  | 1 W DC       |
| Flujo luminoso (fuente)                                   | 165 lm       |
| Rango de voltaje de entrada                               | 350mA        |
| CCT / Tone  | 4000 K       |
| Índice de rendimientos cromático                          | 80 Ra        |
| C.C. / C.V.   | CC           |
| Clase de aislamiento                                      | 3            |
| IP  | IP66         |
| IK  | IK08         |
| Test del hilo incandescente                               | 850°         |
| Montaje directo sobre superficies normalmente inflamables | Sí           |
| CE  | Sí           |
| Driver incluido.  | No           |
| Artículo regulable  | DALI - 1-10V |
| Orientabilidad  | No           |
| Basculación   | No           |
| Practicabilidad   | Sí           |
| Transitabilidad   | No           |
| Cable incluido.   | Sí           |
| Largo del cable   | 1 m          |
| Resinado  | Sí           |
| Tipología de emisión luminosa                             | Una emisión  |
| Peso neto   | 0.062 Kg     |
| Protección descargas electrostáticas                      | No           |
| Protección contra sobretensiones                          | No           |
| Tecnología óptica   | Anti - Glare |
| Características tecnológicas del producto                 | TVS          |


| Acabado cuerpo |             |
|----------------|-------------|
| Material       | Latón OT58  |
| Color          | Latón crudo |

| Acabado difusor |                               |
|-----------------|-------------------------------|
| Material        | Vidrio extra claro - templado |
| Color           | transparente                  |
| Elaboración     | Serigrafía                    |

### Electrónica

 89421  
On/Off Driver 198~264V AC / 176~275V DC (3 - 6 art.)

 89419  
On/Off Driver 198~264V AC / 176~275V DC (1 - 2 art.)

 C-E200006  
On/Off Driver 198~264V AC / 180~275V DC (6 - 12 art.)

| Cables Electrification |    |
|------------------------|----|
| Cable connector        | No |

# Beret\_X Anti-glaring



Uplights | 1 x powerLED 1 W DC 350 mA | CRI 80  
**81471N60**

Single emission uplights for outdoor application. The natural white LED light source with a wide flood light distribution is composed of 1 powered LEDs with CCT of 4000 K and a CRI 80; the source luminous flux is 165 lm, with a 165.0 lm/W nominal luminous efficacy.

The device body is made of ot58 brass and features a raw brass finish; the diffuser is made of extra clear glass - tempered with a silk-screening treatment. The ingress protection degree is IP66; the total weight is of 0.062 kg. The power supply driver is not provided and is to be ordered separately.

The total absorbed power is 1 W. The power supply cable is included and features a 1 m length.

The device features protection class III and can be floor-mounted, with a 29 mm diameter hole (in plasterboard) with an outer casing, code 84915(for concrete or masonry).

Compliant with the EN 60598-1 standard and its specific provisions.

## Clase de eficiencia energética

Este producto contiene una fuente de luz de clase de eficiencia energética D.

## Características Luminotécnicas

|  |          |
|--|----------|
| Light Output Ratio (LOR)               | 21 %     |
| Flujo luminoso (fuente)                | 165 lm   |
| Flujo luminoso de luminaria            | 36 lm    |
| Consumption                            | 1,0 W    |
| Rendimiento luminoso de las luminarias | 36 lm/W  |
| Temperatura de color                   | 4000 K   |
| Standard Deviation of Colour Matching  | 1.5 Step |
| Índice de rendimientos cromático       | 80 Ra    |

## Temperatura estándar del ambiente de servicio

-20 / +50°C

## Temperatura típica sobre el vidrio

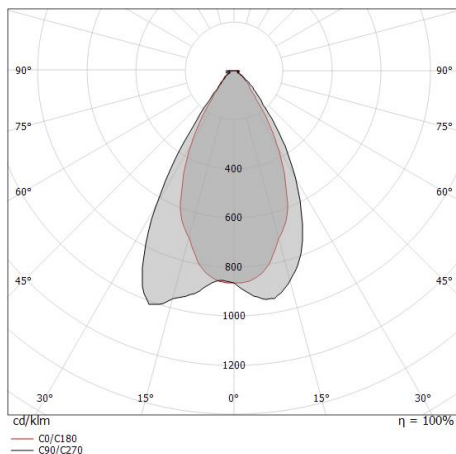
40°C

## LED Life / Failure Ratio

L70 B10 C0 361980h (at Tj 60 Ta 25 )

## OPTICAL

|                             |              |
|-----------------------------|--------------|
| Óptica C0/C180              | 54°          |
| Light distribution symmetry | Asymmetrical |



| Distance [m] | Cone diameter [m] | Illuminance [lx]      |
|--------------|-------------------|-----------------------|
| 0.5          | 0.51              | E(0°) 123<br>E(C0) 44 |
| 1.0          | 1.02              | E(0°) 31<br>E(C0) 11  |
| 1.5          | 1.53              | E(0°) 14<br>E(C0) 5   |
| 2.0          | 2.04              | E(0°) 8<br>E(C0) 3    |
| 2.5          | 2.55              | E(0°) 5<br>E(C0) 2    |
| 3.0          | 3.06              | E(0°) 3<br>E(C0) 1    |

Distance [m] Cone diameter [m] Illuminance [lx]  
 — C0/C180 (Half-peak divergence: 54.0°)

# Beret\_X Anti-glaring



Beret\_X Anti-glaring | Uplights | Accessories  
**81471N60**



Caja de empotrar

posición de instalación: techo; tipo instalación: albañilería L=42mm, H=35mm, D=35mm.

Material:Plástico ABS, color:negro.

**Code**

84336



Caja de empotrar

posición de instalación: pared; tipo instalación: albañilería L=49mm, H=60mm, D=60mm.

Material:Plástico ABS, color:negro.

**Code**

84915