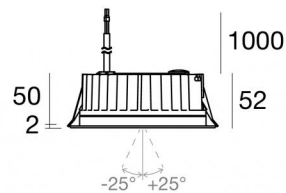




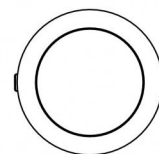
Downlights | 1 + 1 + 1 arrayLED 39 W DC 24 V

CRI 80

81246M30



127



Ø138

Datos técnicos	
Posición de instalación	Techo
Ambiente de instalación	Exteriores
Fuente de luz	LED
Circuit structure	arrayLED
Óptica	Medium Flood + Medium Flood + Medium Flood
Light emission direction	downward + downward + downward
Potencia nominal	39 W DC
Flujo luminoso (fuente)	5628 lm
Rango de voltaje de entrada	24 V
CCT / Tone	2700 K
Índice de rendimientos cromático	80 Ra
C.C. / C.V.	CV
Clase de aislamiento	3
IP	IP67
IK	IK10
Test del hilo incandescente	850°
Montaje directo sobre superficies normalmente inflamables	Sí
CE	Sí
Driver incluido.	No
C.V. - C.C. Converter	Convertidor 24V incluido
Artículo regulable	DALI - 1-10V
Orientabilidad	No
Basculación	Sí
ángulo total (plano vertical)	50 °
Practicabilidad	No
Transitabilidad	No
Cable incluido.	Sí
Largo del cable	1 m
Resinado	Sí
Tipología de emisión luminosa	Una emisión
Peso neto	0.9 Kg
Protección descargas electrostáticas	No
Protección contra sobretensiones	No
Características tecnológicas del producto	Acquastop

Acabado cuerpo

Material	Aluminio fundido EN AB - 46100
Color	negro
Elaboración	Anodizado de poro abierto + pintado con polvo

Acabado difusor

Material	Vidrio extra claro - templado
Color	transparente
Elaboración	Serigrafía

Acabado brida

Material	Acero AISI 316L
Color	acero
Elaboración	Cepillado

Electrónica



89488
On/Off Driver 190-250V AC / 180-275V DC 15 W (1 art.)



89179
On/Off Driver 198-264V AC 24 W (1 art.)



89359
On/Off Driver 198-264V AC / 180-275V DC 48 W (1 art.)



99331
On/Off Driver 198-264V AC / 176-275V DC 150 W (1 art.)



99660
DALI - 1-10V Controller 24V DC 216 W (1 art.)



C-E500023
DALI - 1-10V - Push and Simply Dim Controller 8-53V DC 576 W (1 art.)

Cables Electrification

Cable connector	No
-----------------	----



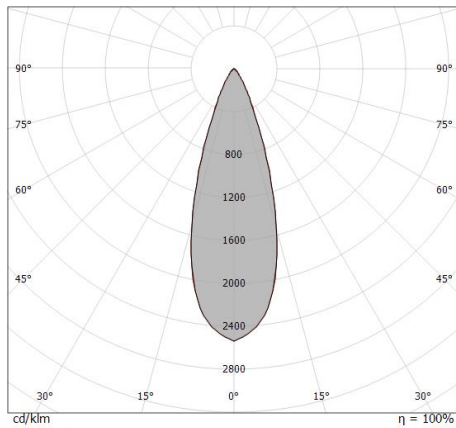
Downlights | 1 + 1 + 1 arrayLED 39 W DC 24 V | CRI 80 81246M30

Single emission recessed downlights for outdoor application. The super warm white LED light source with a medium flood light distribution is composed of 1 arrayed LEDs with CCT of 2700 K and a CRI 80; the source luminous flux is 1876 lm, with a 144.3 lm/W nominal luminous efficacy The super warm white LED light source with a medium flood light distribution is composed of 1 arrayed LEDs with CCT of 2700 K and a CRI 80; the source luminous flux is 1876 lm, with a 144.3 lm/W nominal luminous efficacy The super warm white LED light source with a medium flood light distribution is composed of 1 arrayed LEDs with CCT of 2700 K and a CRI 80; the source luminous flux is 1876 lm, with a 144.3 lm/W nominal luminous efficacy.

The device body is made of die-cast aluminium en ab - 46100 and features a black finish, processed by means of open pore anodizing + powder coating; the diffuser is made of extra clear glass - tempered with a silk-screening treatment. The ingress protection degree is IP67; the total weight is of 0.9 kg.

The total absorbed power is 39 W. The power supply cable is included and features a 1 m length.

The device features protection class III and can be ceiling-mounted, with a 127 mm diameter hole (in plasterboard) with an outer casing, code 99749(for concrete or masonry).



c provisions.

Distance [m]	Cone diameter [m]	illuminance [lx]
0.5	0.30 0.30	E(0°) 13373 E(C90) 16.8° 5916 E(C0) 16.9° 5875
1.0	0.60 0.61	E(0°) 3343 E(C90) 16.8° 1479 E(C0) 16.9° 1469
1.5	0.91 0.91	E(0°) 1486 E(C90) 16.8° 657 E(C0) 16.9° 653
2.0	1.21 1.22	E(0°) 836 E(C90) 16.8° 370 E(C0) 16.9° 367
2.5	1.51 1.52	E(0°) 535 E(C90) 16.8° 237 E(C0) 16.9° 235
3.0	1.81 1.82	E(0°) 371 E(C90) 16.8° 164 E(C0) 16.9° 163

Distance [m] Cone diameter [m] illuminance [lx]

— C0/C180 (Half-peak divergence: 33.8°)
— C90/C270 (Half-peak divergence: 33.6°)

Clase de eficiencia energética

Este producto contiene 3 fuentes de luz de clase de eficiencia energética E.

Características Luminotécnicas

Light Output Ratio (LOR)	23 %
Flujo luminoso (fuente)	5628 lm
Flujo luminoso de luminaria	1318 lm
Consumption	13 W
Rendimiento luminoso de las luminarias	101 lm/W
Temperatura de color	2700 K
Standard Deviation of Colour Matching	2 Step MacAdam
Índice de rendimientos cromático	80 Ra

Temperatura estándar del ambiente de servicio -20 / +50°C

Temperatura típica sobre el vidrio 40°C

LED Life / Failure Ratio

L70 B10 C0 296960h (at Tj 65 Ta 25)

UGR

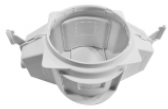
UGR axial	15.2
UGR transversal	14.7
X=4H Y=8H	S=0.25H
Reflection factor	70/50/20

OPTICAL

Óptica C0/C180	34°
Light distribution simmetry	Symmetrical



Orma_CJ | Downlights | Accessories
81246M30



Caja de empotrar - (completar con grill universal 99750)
posición de instalación: techo; tipo instalación: albañilería L=290mm, H=125mm,
D=190mm

Code
99749



Accesorios para cajas de empotrar - Rejilla universal para Caja exterior 99749

Code
99750