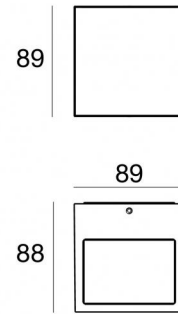
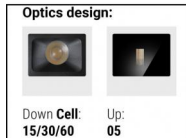




Luminaria de pared | 198-264 V
2 x powerLEDs - 1 arrayLED 13.4 W DC - 15.5 W AC | CRI 80
76626N60



| Datos técnicos | |
|---|-------------------------|
| Tipo | Superficie |
| Posición de instalación | Pared |
| Ambiente de instalación | Exteriores |
| Fuente de luz | LED |
| Circuit structure | powerLEDs + arrayLED |
| Óptica | Ultra Spot + Wide Flood |
| Light emission direction | upward + downward |
| Potencia nominal | 13.4 W DC |
| Poder total | 15.5 W |
| Flujo luminoso (fuente) | 1393 lm |
| Tensión nominal de entrada | 220 - 240 V AC |
| Rango de voltaje de entrada | 198 - 264 V AC |
| Frequency | 50 - 60 Hz |
| CCT / Tone | 4000 K |
| Índice de rendimientos cromático | 80 Ra |
| C.C. / C.V. | AC |
| Clase de aislamiento | 1 |
| IP | IP65 |
| IK | IK08 |
| Test del hilo incandescente | 850° |
| Montaje directo sobre superficies normalmente inflamables | Sí |
| CE | Sí |
| Driver incluido. | driver |
| Artículo regulable | No |
| Orientabilidad | No |
| Basculación | No |
| Practicabilidad | No |
| Transitabilidad | No |
| Cable incluido. | No |
| Resinado | No |
| Tipología de emisión luminosa | Dos emisiones |
| Peso neto | 0.83 Kg |
| Protección descargas electrostáticas | Sí |
| Protección contra sobretensiones | 1 KV |

| Acabado cuerpo | |
|-----------------|---|
| Material | Aluminio fundido EN AB - 46100 |
| Color | Gris |
| Elaboración | Anodizado de poro abierto + pintado con polvo |
| Acabado difusor | |
| Material | Vidrio extra claro - templado |
| Color | transparente |
| Elaboración | Serigrafía |

Luminaria de pared | 198-264 V | 2 x powerLEDs - 1 arrayLED 13.4 W DC - 15.5 W AC |
CRI 80
76626N60

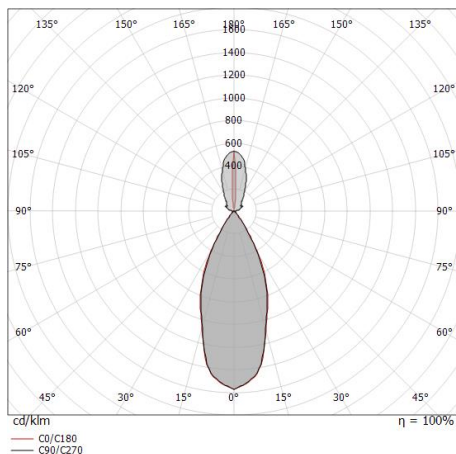
Double emission wall lights for outdoor application. The natural white LED light source with a ultra spot light distribution is composed of 2 powerled LEDs with CCT of 4000 K and a CRI 80; the source luminous flux is 458 lm, with a 68.4 lm/W nominal luminous efficacy The natural white LED light source with a medium wide flood light distribution is composed of 1 arrayled LEDs with CCT of 4000 K and a CRI 80; the source luminous flux is 935 lm, with a 139.6 lm/W nominal luminous efficacy.

The device body is made of die-cast aluminium en ab - 46100 and features a grey finish, processed by means of open pore anodizing + powder coating; the diffuser is made of extra clear glass - tempered with a silk-screening treatment. The ingress protection degree is IP65; the total weight is of 0.83 kg.

The total absorbed power is 15.5 W.

The device features protection class I and can be wall lights-mounted.

Compliant with the EN 60598-1 standard and its specific provisions.



| Distance [m] | Cone diameter [m] | illuminance [lx] |
|--------------|-------------------|---|
| 0.5 | 0.40 0.41 | E(0°) 4521 E(C90) 1819 E(C0) 1806 |
| 1.0 | 0.80 0.81 | E(0°) 1130 E(C90) 455 E(C0) 451 |
| 1.5 | 1.19 1.22 | E(0°) 502 E(C90) 202 E(C0) 201 |
| 2.0 | 1.59 1.62 | E(0°) 283 E(C90) 114 E(C0) 113 |
| 2.5 | 1.99 2.03 | E(0°) 181 E(C90) 73 E(C0) 72 |
| 3.0 | 2.39 2.44 | E(0°) 126 E(C90) 51 E(C0) 50 |

— C0/C180 (Half-peak divergence: 44.2°)
— C90/C270 (Half-peak divergence: 43.4°)

Clase de eficiencia energética

Este producto contiene 2 fuentes de luz de clase de eficiencia energética E, E.

Características Luminotécnicas

| | |
|--|----------------|
| Light Output Ratio (LOR) | 51 % |
| Flujo luminoso (fuente) | 1393 lm |
| Flujo luminoso de luminaria | 719 lm |
| Consumption | 15.5 W |
| Rendimiento luminoso de las luminarias | 46 lm/W |
| Temperatura de color | 4000 K |
| Standard Deviation of Colour Matching | 3 Step MacAdam |
| Índice de rendimientos cromático | 80 Ra |

| | |
|---|-------------|
| Temperatura estándar del ambiente de servicio | -20 / +50°C |
| Temperatura típica sobre el vidrio | 40°C |

LED Life / Failure Ratio

L70 B10 C0 134020h (at Tj 65 Ta 25)

UGR

| | |
|-------------------|----------|
| UGR axial | 19 |
| UGR transversal | 21.2 |
| X=4H Y=8H | S=0.25H |
| Reflection factor | 70/50/20 |

OPTICAL

| | |
|-----------------------------|-------------|
| Óptica C0/C180 | 43° |
| Light distribution simmetry | Symmetrical |