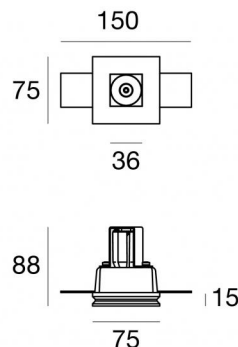
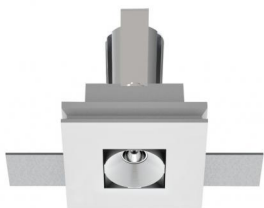


Gypsum Cell



Downlights | 1 x powerLED 2 W DC 630 mA | CRI 90
64630M45



85


Datos técnicos	
Posición de instalación	Techo
Ambiente de instalación	Interiores
Fuente de luz	LED
Circuit structure	powerLED
Óptica	Medium Wide Flood
Light emission direction	downward
Potencia nominal	2 W DC
Flujo luminoso (fuente)	199 lm
Rango de voltaje de entrada	630mA
CCT / Tone	2700 K
Índice de rendimientos cromático	90 Ra
C.C. / C.V.	CC
Clase de aislamiento	3
IP	IP20
Test del hilo incandescente	850°
Montaje directo sobre superficies normalmente inflamables	Sí
CE	Sí
Driver incluido.	No
Artículo regulable	DALI - 1-10V
Orientabilidad	No
Basculación	No
Practicabilidad	No
Transitabilidad	No
Cable incluido.	Sí
Largo del cable	0.170 m
Resinado	No
Tipología de emisión luminosa	Una emisión
Peso neto	0.42 Kg
Protección descargas electrostáticas	No
Protección contra sobretensiones	No
Características tecnológicas del producto	TVS


Acabado cuerpo	
Material	gesso
Color	blanco


Acabado difusor	
Material	Pet
Color	Blanco


Acabado radiador	
Material	Aluminio fundido EN AB - 46100
Elaboración	Pulido

Electrónica

 89147
On/Off Driver 198~264V AC / 180~275V DC (1 - 2 art.)

 99105
On/Off Driver 198~264V AC (1 - 12 art.)

 99374
On/Off Driver 198~264V AC / 176~275V DC 75 W (1 - 37 art.)

 99710
1-10V Converter 24V DC (1 art.)

 99713
DALI Converter 24V DC (1 art.)

 99376
On/Off Driver 198~264V AC (1 - 6 art.)

Cables Electrificación	
Cable connector	No

Downlights | 1 x powerLED 2 W DC 630 mA | CRI 90
64630M45

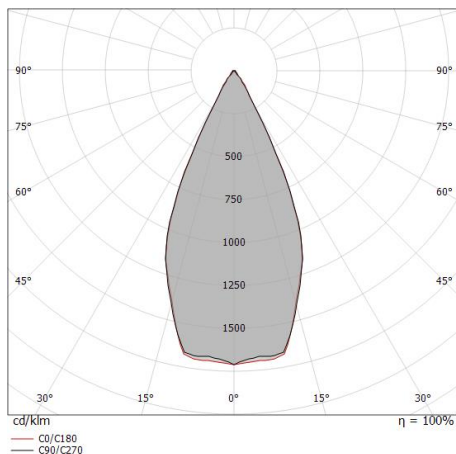
Single emission recessed downlights for indoor application. The super warm white LED light source with a medium wide flood light distribution is composed of 1 powered LEDs with CCT of 2700 K and a CRI 90; the source luminous flux is 199 lm, with a 99.5 lm/W nominal luminous efficacy.

The device body is made of plaster and features a white finish; the diffuser is made of pet. The ingress protection degree is IP20; the total weight is of 0.42 kg. The power supply driver is not provided and is to be ordered separately.

The total absorbed power is 2 W. The power supply cable is included and features a 0.170 m length.

The device features protection class III and can be ceiling-mounted, with a 85 x 85 mm hole (in plasterboard).

Compliant with the EN 60598-1 standard and its specific provisions.



Distance [m]	Cone diameter [m]	illuminance [lx]
0.5	0.45 0.44	E(0°) 712 E(C90) 24.1° 271 E(C0) 23.9° 275
1.0	0.89 0.89	E(0°) 178 E(C90) 24.1° 68 E(C0) 23.9° 69
1.5	1.34 1.33	E(0°) 79 E(C90) 24.1° 30 E(C0) 23.9° 31
2.0	1.79 1.77	E(0°) 44 E(C90) 24.1° 17 E(C0) 23.9° 17
2.5	2.24 2.22	E(0°) 28 E(C90) 24.1° 11 E(C0) 23.9° 11
3.0	2.68 2.66	E(0°) 20 E(C90) 24.1° 8 E(C0) 23.9° 8

— C0/C180 (Half-peak divergence: 47.8°)
 — C90/C270 (Half-peak divergence: 48.2°)

Clase de eficiencia energética

Este producto contiene una fuente de luz de clase de eficiencia energética F.

Características Luminotécnicas

Light Output Ratio (LOR)	52 %
Flujo luminoso (fuente)	199 lm
Flujo luminoso de luminaria	104 lm
Consumption	2,0 W
Rendimiento luminoso de las luminarias	52 lm/W
Temperatura de color	2700 K
Standard Deviation of Colour Matching	3 Step MacAdam
Índice de rendimientos cromático	90 Ra

Temperatura estándar del ambiente de servicio	-20 / +50°C
Temperatura típica sobre el vidrio	40°C

LED Life / Failure Ratio

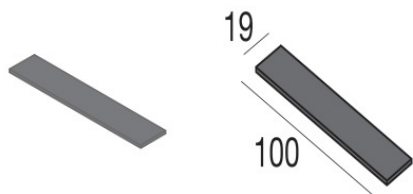
L70 B20 C0 214455h (at Tj 60 Ta 25)

UGR

UGR axial	14.6
UGR transversal	14.2
X=4H Y=8H	S=0.25H
Reflection factor	70/50/20

OPTICAL

Óptica C0/C180	48°
Light distribution simmetry	Symmetrical



Espesores - KIT espesores para la instalación de paneles de yeso

Code

60830