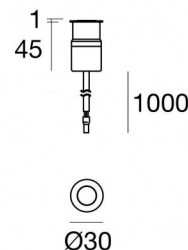




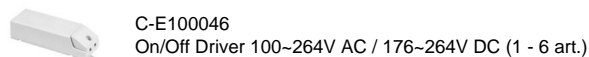
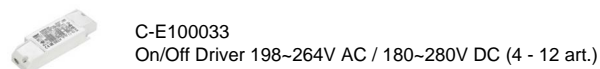
Uplights | 1 x powerLED 3 W DC 1000 mA | CRI 80
C01049CHNML



Technical data	
Type	Trimless
Installation position	Floor
Installation environment	Outdoor
Light Source	LED
Circuit structure	powerLED
Optics	Medium Flood
Light emission direction	upward
Nominal power	3 W DC
Source lumens	642 lm
Input voltage range	1000mA
CCT / Tone	4000 K
Colour rendering index	80 Ra
C.C. / C.V.	CC
Safety class	3
IP	IP68
Installation limitations	Not for underwater use
IK	IK09
Glow wire test	850°
Direct mounting on normally flammable surfaces	Yes
CE	Yes
Driver included	No
Dimmable article	DALI - 1-10V
Directional	No
Tilting	No
Walk-over	Yes
Drive-over	No
Cable included	Yes
Cable length	1 m
Resin potting	Yes
Type of light emission	Single emission
Net weight	0.140 Kg
Electrostatic discharge protection	No
Surge protection	No
Product technological characteristics	Acquastop - TVS

Finishing casing	
Material	OT58 brass
Colour	chrome
Processing	Galvanic Chromium Plating

Electronics



Cables Electrification	
Cable connector	No



Uplights | 1 x powerLED 3 W DC 1000 mA | CRI 80 | Base C01049CHNML

Single emission uplights for outdoor application. The natural white LED light source with a medium flood light distribution is composed of 1 powered LEDs with CCT of 4000 K and a CRI 80; the source luminous flux is 642 lm, with a 214.0 lm/W nominal luminous efficacy.

The device body is made of ot58 brass and features a chrome finish, processed by means of galvanic chromium plating. The ingress protection degree is IP68; the total weight is of 0.140 kg. The power supply driver is not provided and is to be ordered separately.

The total absorbed power is 3 W. The power supply cable is included and features a 1 m length.

The device features protection class III and can be floor-mounted with an outer casing, code 84918(for concrete or masonry).

Compliant with the EN 60598-1 standard and its specific provisions.

Energy efficiency class

This product contains a light source of energy efficiency class D.

Illuminotechnical Features

Light Output Ratio (LOR)	41 %
Source lumens	642 lm
Delivered lumens	264 lm
Consumption	3 W
Luminaire efficacy	88 lm/W
Colour temperature	4000 K
Standard Deviation of Colour Matching	1.5 Step
Colour rendering index	80 Ra
Standard Operating Ambient Temperature	-20 / +50°C
Ordinary temperature on the glass	40°C

LED Life / Failure Ratio

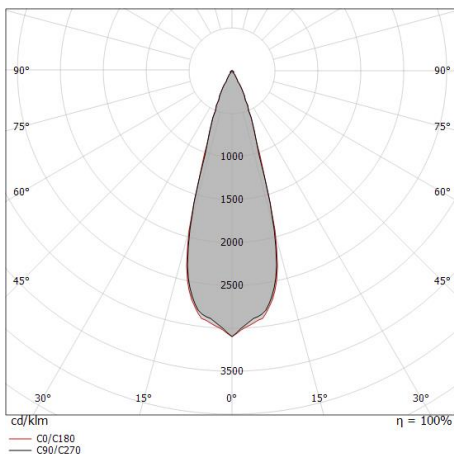
L70 B10 C0 361980h (at Tj 60 Ta 25)

UGR

UGR axial	21.5
UGR transversal	21
X=4H Y=8H	S=0.25H
Reflection factor	70/50/20

OPTICAL

C0/C180 optics	32°
Light distribution simmetry	Symmetrical



Distance [m]	Cone diameter [m]	Half-peak divergence [°]	E(0°) [lx]	E(C0) [lx]
0.5	0.29	32.2°	3261	1466
1.0	0.58	32.2°	815	366
1.5	0.87	32.2°	362	163
2.0	1.15	32.2°	204	92
2.5	1.44	32.2°	130	59
3.0	1.73	32.2°	91	41



Suelo_R | Uplights | Accessories
C01049CHNML



Outer casing

installation position: floor, land; type of installation: masonry L=87mm, H=60mm, D=60mm.

Material:ABS Plastic, colour:black.

Code

84918