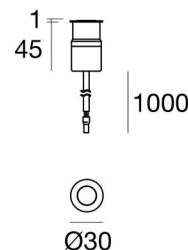




Uplights | 1 x powerLED 3 W DC 1000 mA | CRI 80  
**C01049CHMXF**

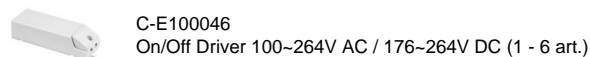
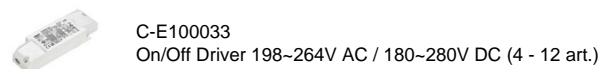
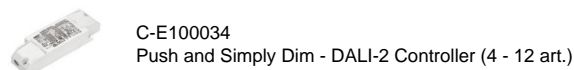


Technical data	
Type	Trimless
Installation position	Floor
Installation environment	Outdoor
Light Source	LED
Circuit structure	powerLED
Optics	Extra Wide Flood
Light emission direction	upward
Nominal power	3 W DC
Source lumens	417 lm
Input voltage range	1000mA
CCT / Tone	2700 K
Colour rendering index	80 Ra
C.C. / C.V.	CC
Safety class	3
IP	IP68
Installation limitations	Not for underwater use
IK	IK09
Glow wire test	850°
Direct mounting on normally flammable surfaces	Yes
CE	Yes
Driver included	No
Dimmable article	DALI - 1-10V
Directional	No
Tilting	No
Walk-over	Yes
Drive-over	No
Cable included	Yes
Cable length	1 m
Resin potting	Yes
Type of light emission	Single emission
Net weight	0.140 Kg
Electrostatic discharge protection	No
Surge protection	No
Product technological characteristics	Acquastop - TVS

### Finishing casing

Material	OT58 brass
Colour	chrome
Processing	Galvanic Chromium Plating

### Electronics



### Cables Electrification

Cable connector	No
-----------------	----



Uplights | 1 x powerLED 3 W DC 1000 mA | CRI 80 | Base  
**C01049CHMXF**

Single emission uplights for outdoor application. The super warm white LED light source with a extra wide flood light distribution is composed of 1 powerLED LEDs with CCT of 2700 K and a CRI 80; the source luminous flux is 417 lm, with a 139.0 lm/W nominal luminous efficacy.

The device body is made of ot58 brass and features a chrome finish, processed by means of galvanic chromium plating. The ingress protection degree is IP68; the total weight is of 0.140 kg. The power supply driver is not provided and is to be ordered separately.

The total absorbed power is 3 W. The power supply cable is included and features a 1 m length.

The device features protection class III and can be floor-mounted with an outer casing, code 84918(for concrete or masonry).

Compliant with the EN 60598-1 standard and its specific provisions.

### Energy efficiency class

This product contains a light source of energy efficiency class D.

### Illuminotechnical Features

Light Output Ratio (LOR)	56 %
Source lumens	417 lm
Delivered lumens	235 lm
Consumption	3 W
Luminaire efficacy	78 lm/W
Colour temperature	2700 K
Standard Deviation of Colour Matching	1.5 Step
Colour rendering index	80 Ra

Standard Operating Ambient Temperature	-20 / +50°C
Ordinary temperature on the glass	40°C

### LED Life / Failure Ratio

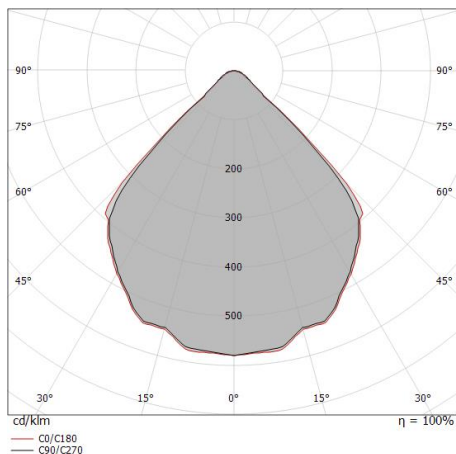
L70 B10 C0 361980h (at Tj 60 Ta 25 )

### UGR

UGR axial	29.4
UGR transversal	29.2
X=4H   Y=8H	S=0.25H
Reflection factor	70/50/20

### OPTICAL

C0/C180 optics	89°
Light distribution simmetry	Symmetrical



Distance [m]	Cone diameter [m]	Illuminance [lx]	E(0°)	E(C90)	E(C0)
0.5	0.98 1.02	545 100 94	44.4°	45.6°	
1.0	1.96 2.04	136 25 24	44.4°	45.6°	
1.5	2.94 3.06	61 11 10	44.4°	45.6°	
2.0	3.92 4.08	34 6 6	44.4°	45.6°	
2.5	4.90 5.11	22 4 4	44.4°	45.6°	
3.0	5.88 6.13	15 3 3	44.4°	45.6°	

Distance [m]      Cone diameter [m]      Illuminance [lx]

— C0/C180 (Half-peak divergence: 91.2°)  
 — C90/C270 (Half-peak divergence: 88.8°)



Suelo\_R | Uplights | Accessories  
**C01049CHMXF**



Outer casing

installation position: floor, land; type of installation: masonry L=87mm, H=60mm, D=60mm.

Material:ABS Plastic, colour:black.

**Code**

84918