

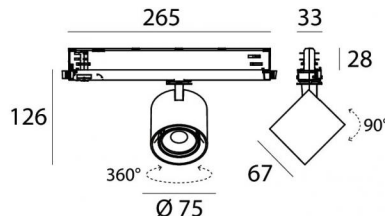
Optus_T V2



Projectors | 176-264 V AC /176-280 V DC
1 arrayLED 10 W DC - 12 W AC | CRI 98



C00999BBNWF



Technical data	
Type	Track
Installation position	Ceiling
Installation environment	Indoor
Light Source	LED
Circuit structure	arrayLED
Optics	Wide Flood
Light emission direction	frontal
Nominal power	10 W DC
Total Power	12 W
Source lumens	1822 lm
Nominal input voltage	220 - 240 V AC
Input voltage range	176 - 264 V AC
Frequency	50 - 60 Hz
CCT / Tone	4000 K
Colour rendering index	98 Ra
C.C. / C.V.	AC
Safety class	2
IP	IP20
Glow wire test	850°
Direct mounting on normally flammable surfaces	Yes
CE	Yes
Driver included	Driver
Dimmable article	DALI-2 - PUSH DIM
Directional	Swivelling
total angle (vertical plane)	90 °
total angle (horizontal plane)	360 °
Tilting	No
Walk-over	No
Drive-over	No
Cable included	No
Resin potting	No
Type of light emission	Single emission
Net weight	0.412 Kg
Electrostatic discharge protection	Yes
Surge protection	2 KV

Finishing casing

Material	Die-cast Aluminium EN AB - 46100
Colour	Black
Processing	Powder coating

The driver contained in the device complies with IEC 61347-2-13 annex J, and can therefore be powered by centralized power systems.



Projectors | 176-264 V AC /176-280 V DC | 1 arrayLED 10 W DC - 12 W AC | CRI 98 | Base
C00999BBNWF

Single emission projectors for indoor application. The natural white LED light source with a wide flood light distribution is composed of 1 arrayed LEDs with CCT of 4000 K and a CRI 98; the source luminous flux is 1822 lm, with a 182.2 lm/W nominal luminous efficacy.

The device body is made of die-cast aluminium en ab - 46100 and features a black finish, processed by means of powder coating. The ingress protection degree is IP20; the total weight is of 0.412 kg.

The total absorbed power is 12 W.

The device features protection class II and can be ceiling-mounted.

Compliant with the EN 60598-1 standard and its specific provisions.

Energy efficiency class

This product contains a light source of energy efficiency class F.

Illuminotechnical Features

Light Output Ratio (LOR)	71 %
Source lumens	1822 lm
Delivered lumens	1309 lm
Consumption	12 W
Luminaire efficacy	109 lm/W
Colour temperature	4000 K
Standard Deviation of Colour Matching	2 Step MacAdam
Colour rendering index	98 Ra
Black Body Locus	On
Standard Operating Ambient Temperature	-20 / +50°C
Ordinary temperature on the glass	40°C

LED Life / Failure Ratio

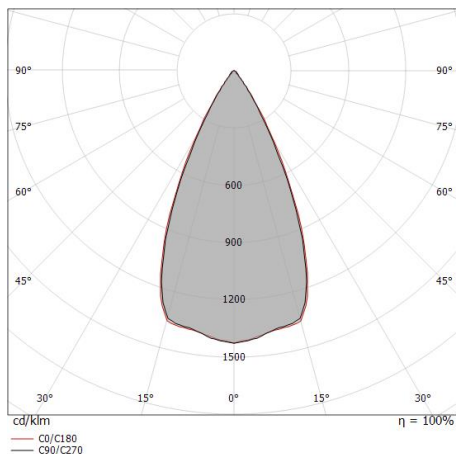
L70 B10 C0 252000h (at Tj 65 Ta 25)

UGR

UGR axial	19
UGR transversal	19.2
X=4H Y=8H	S=0.25H
Reflection factor	70/50/20

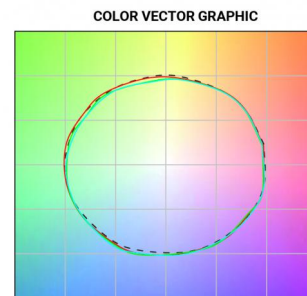
OPTICAL

C0/C180 optics	50°
Light distribution symmetry	Symmetrical



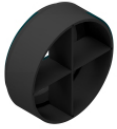
Distance [m]	Cone diameter [m]	illuminance [lx]
0.5	0.47 0.47	E(0°) 7467 E(C90) 25.0° 2783 E(C0) 25.4° 2775
1.0	0.93 0.95	E(0°) 1867 E(C90) 25.0° 696 E(C0) 25.4° 694
1.5	1.40 1.42	E(0°) 830 E(C90) 25.0° 309 E(C0) 25.4° 308
2.0	1.87 1.90	E(0°) 467 E(C90) 25.0° 174 E(C0) 25.4° 173
2.5	2.33 2.37	E(0°) 299 E(C90) 25.0° 111 E(C0) 25.4° 111
3.0	2.80 2.85	E(0°) 207 E(C90) 25.0° 77 E(C0) 25.4° 77

— C0/C180 (Half-peak divergence: 50.8°)
 — C90/C270 (Half-peak divergence: 50.0°)



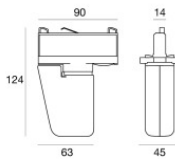


	<p>Optics Light distribution: adjustable,Cover material: uv resistant polycarbonate</p>	<p>Code <u>C-U100002</u></p>
	<p>Optics Light distribution: adjustable,Cover material: ,uv resistant polycarbonate,uv resistant polycarbonate,uv resistant polycarbonate</p>	<p>Code <u>C-U100003</u></p>
	<p>Optics Light distribution: adjustable,Cover material: ,uv resistant polycarbonate,uv resistant polycarbonate,uv resistant polycarbonate</p>	<p>Code <u>C-U100004</u></p>
	<p>Anti-glare - Accessory for focal kit with code 83347. Anti-glare Type: honeycomb louvre. Material:Pom-C, colour:Black.</p>	<p>Code <u>99841</u></p>
	<p>Anti-glare Anti-glare Type: honeycomb louvre. Material:Pom-C, colour:Black.</p>	<p>Code <u>C-U300043</u></p>
	<p>Diffuser Diffuser Type: elliptical filter</p>	<p>Code <u>C-U300044</u></p>
	<p>Anti-glare Anti-glare Type: cylindrical screen. Material:Pom-C, colour:Black.</p>	<p>Code <u>C-U300045</u></p>
	<p>Anti-glare Anti-glare Type: 45° cylindrical screen. Material:Pom-C, colour:Black.</p>	<p>Code <u>C-U300046</u></p>



Anti-glare
 Anti-glare Type: cross louvres.
 Material:Pom-C, colour:Black.

Code
C-U300047



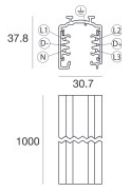
Electronic accessory - TWIL-DALI controller for devices with DALI protocol installed on three-phase track.
 installation position: ceiling L=90mm, H=124mm, D=45mm.
 Material:ABS Plastic, colour:black.

Code
C-E700008



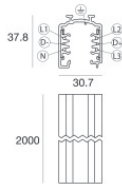
Optics
 Light distribution: adjustable,Cover material: ,aluminium

Code
83347



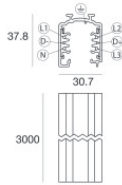
Track
 Length: 1000mm; Type of track: Standard.
 Material:Aluminium, colour:White, processing:Coating.

Finish **Code**
White 83336



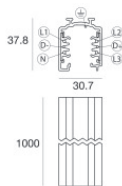
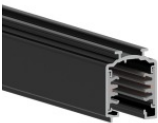
Track
 Length: 2000mm; Type of track: Standard.
 Material:Aluminium, colour:White, processing:Coating.

Finish **Code**
White 83337



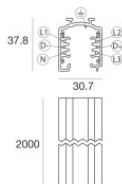
Track
 Length: 3000mm; Type of track: Standard.
 Material:Aluminium, colour:White, processing:Coating.

Finish **Code**
White 83338



Track
 Length: 1000mm; Type of track: Standard.
 Material:Aluminium, colour:Black, processing:Coating.

Finish **Code**
Black 83339



Track
 Length: 2000mm; Type of track: Standard.
 Material:Aluminium, colour:Black, processing:Coating.

Finish **Code**
Black 83340



		<p>Track - Three-phase Recessed White DALI Track, 1 m (9000-1/W-R) Length: 1000mm; Type of track: Standard. Material:Aluminium, colour:White, processing:Coating.</p>	<table border="1"> <thead> <tr> <th>Finish</th> <th>Code</th> </tr> </thead> <tbody> <tr> <td>White</td> <td>80990</td> </tr> </tbody> </table>	Finish	Code	White	80990
Finish	Code						
White	80990						
		<p>Track - Three-phase Recessed White DALI Track, 2 m (9000-2/W-R) Length: 2000mm; Type of track: Standard. Material:Aluminium, colour:White, processing:Coating.</p>	<table border="1"> <thead> <tr> <th>Finish</th> <th>Code</th> </tr> </thead> <tbody> <tr> <td>White</td> <td>80991</td> </tr> </tbody> </table>	Finish	Code	White	80991
Finish	Code						
White	80991						
		<p>Track Length: 3000mm; Type of track: Standard. Material:Aluminium, colour:Black, processing:Coating.</p>	<table border="1"> <thead> <tr> <th>Finish</th> <th>Code</th> </tr> </thead> <tbody> <tr> <td>Black</td> <td>83341</td> </tr> </tbody> </table>	Finish	Code	Black	83341
Finish	Code						
Black	83341						
		<p>Track - Three-phase Recessed Grey DALI Track, 1 m (9000-1/B-R) Length: 1000mm; Type of track: Standard. Material:Aluminium, colour:Black, processing:Coating.</p>	<table border="1"> <thead> <tr> <th>Finish</th> <th>Code</th> </tr> </thead> <tbody> <tr> <td>Black</td> <td>80993</td> </tr> </tbody> </table>	Finish	Code	Black	80993
Finish	Code						
Black	80993						
		<p>Track - Three-phase Recessed White DALI Track, 3 m (9000-3/W-R) Length: 3000mm; Type of track: Standard. Material:Aluminium, colour:White, processing:Coating.</p>	<table border="1"> <thead> <tr> <th>Finish</th> <th>Code</th> </tr> </thead> <tbody> <tr> <td>White</td> <td>80992</td> </tr> </tbody> </table>	Finish	Code	White	80992
Finish	Code						
White	80992						
		<p>Track - Three-phase Recessed Black DALI Track, 2 m (9000-1/B-R) Length: 2000mm; Type of track: Standard. Material:Aluminium, colour:Black, processing:Coating.</p>	<table border="1"> <thead> <tr> <th>Finish</th> <th>Code</th> </tr> </thead> <tbody> <tr> <td>Black</td> <td>80994</td> </tr> </tbody> </table>	Finish	Code	Black	80994
Finish	Code						
Black	80994						
		<p>Track - Three-phase Recessed Black DALI Track, 3 m (9000-3/B-R) Length: 3000mm; Type of track: Standard. Material:Aluminium, colour:Black, processing:Coating.</p>	<table border="1"> <thead> <tr> <th>Finish</th> <th>Code</th> </tr> </thead> <tbody> <tr> <td>Black</td> <td>80995</td> </tr> </tbody> </table>	Finish	Code	Black	80995
Finish	Code						
Black	80995						
		<p>Power supply - White Right power supply header (9001/W) Material:PC, colour:white.</p>	<table border="1"> <thead> <tr> <th>Code</th> </tr> </thead> <tbody> <tr> <td>81033</td> </tr> </tbody> </table>	Code	81033		
Code							
81033							



		<p>Power supply - Black Right power supply header (9001/B) Material:PC, colour:black.</p>	<p>Code 81034</p>
		<p>Power supply - White left power supply header (9002/W) Material:PC, colour:white.</p>	<p>Code 81036</p>
		<p>Power supply - Black left power supply header (9002/B) Material:PC, colour:black.</p>	<p>Code 81037</p>
		<p>Junction - White power supply junction - central (9010/W) Type linear. Material:PC, colour:white.</p>	<p>Finish White</p> <p>Code 81042</p>
		<p>Junction - Black power supply junction - centrale (9010/B) Type linear. Material:PC, colour:black.</p>	<p>Finish Black</p> <p>Code 81043</p>
		<p>Junction - Flexible white junction (9018/W) Type flexible curve. Material:PC, colour:white.</p>	<p>Finish White</p> <p>Code 81066</p>
		<p>Junction - Left white T junction - external (9013/W) Type linear. Material:PC, colour:white.</p>	<p>Finish White</p> <p>Code 81051</p>
		<p>Junction - Flexible black junction (9018/B) Type flexible curve. Material:PC, colour:black.</p>	<p>Finish Black</p> <p>Code 81067</p>

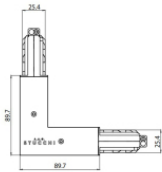


		<p>Junction - Black left T junction - external (9013/B) Type linear. Material:PC, colour:black.</p>	<table border="1"> <thead> <tr> <th>Finish</th> <th>Code</th> </tr> </thead> <tbody> <tr> <td>Black</td> <td>81052</td> </tr> </tbody> </table>	Finish	Code	Black	81052
Finish	Code						
Black	81052						
		<p>Junction - Right black T junction - external (9014/B) Type linear. Material:PC, colour:black.</p>	<table border="1"> <thead> <tr> <th>Finish</th> <th>Code</th> </tr> </thead> <tbody> <tr> <td>Black</td> <td>81055</td> </tr> </tbody> </table>	Finish	Code	Black	81055
Finish	Code						
Black	81055						
		<p>Junction - Right white T junction - external (9014/W) Type linear. Material:PC, colour:white.</p>	<table border="1"> <thead> <tr> <th>Finish</th> <th>Code</th> </tr> </thead> <tbody> <tr> <td>White</td> <td>81054</td> </tr> </tbody> </table>	Finish	Code	White	81054
Finish	Code						
White	81054						
		<p>Closing cap - Black end cap 9004/B Material:PC, colour:black.</p>	<table border="1"> <thead> <tr> <th>Code</th> </tr> </thead> <tbody> <tr> <td>81000</td> </tr> </tbody> </table>	Code	81000		
Code							
81000							
		<p>Junction - White electrical junction - internal (9003/W) Type linear. Material:PC, colour:white.</p>	<table border="1"> <thead> <tr> <th>Finish</th> <th>Code</th> </tr> </thead> <tbody> <tr> <td>White</td> <td>81039</td> </tr> </tbody> </table>	Finish	Code	White	81039
Finish	Code						
White	81039						
		<p>Junction - Black electrical junction - internal (9003/B) Type linear. Material:PC, colour:black.</p>	<table border="1"> <thead> <tr> <th>Finish</th> <th>Code</th> </tr> </thead> <tbody> <tr> <td>Black</td> <td>81040</td> </tr> </tbody> </table>	Finish	Code	Black	81040
Finish	Code						
Black	81040						
		<p>Junction - White L junction - internal (9011/W) Type linear. Material:PC, colour:white.</p>	<table border="1"> <thead> <tr> <th>Finish</th> <th>Code</th> </tr> </thead> <tbody> <tr> <td>White</td> <td>81045</td> </tr> </tbody> </table>	Finish	Code	White	81045
Finish	Code						
White	81045						
		<p>Junction - Black L junction - internal (9011/B) Type linear. Material:PC, colour:black.</p>	<table border="1"> <thead> <tr> <th>Finish</th> <th>Code</th> </tr> </thead> <tbody> <tr> <td>Black</td> <td>81046</td> </tr> </tbody> </table>	Finish	Code	Black	81046
Finish	Code						
Black	81046						



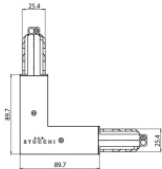
Closing cap - White end cap 9004/W
 Material:PC, colour:white.

Code
 80999



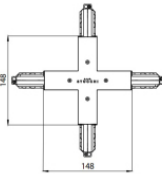
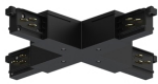
Junction - Black L junction - external (9012/B)
 Type linear.
 Material:PC, colour:black.

Finish
 Black **Code**
 81049



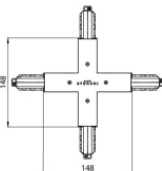
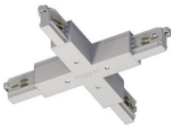
Junction - White L junction - external (9012/W)
 Type linear.
 Material:PC, colour:white.

Finish
 White **Code**
 81048



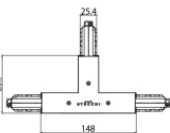
Junction - Black X junction (9017/B)
 Type linear.
 Material:PC, colour:black.

Finish
 Black **Code**
 81064



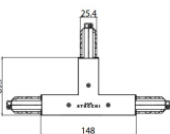
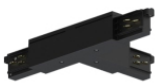
Junction - White X junction (9017/W)
 Type linear.
 Material:PC, colour:white.

Finish
 White **Code**
 81063



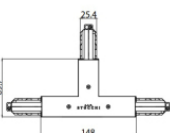
Junction - Left white T junction - internal (9015/W)
 Type linear.
 Material:PC, colour:white.

Finish
 White **Code**
 81057



Junction - Left black T junction - internal (9015/B)
 Type linear.
 Material:PC, colour:black.

Finish
 Black **Code**
 81058



Junction - Right White T junction - internal (9016/W)
 Type linear.
 Material:PC, colour:white.

Finish
 White **Code**
 81060



		<p>Junction - Right black T junction - internal (9016/B) Type linear. Material:PC, colour:black.</p>	<p>Finish Black</p> <p>Code 81061</p>
		<p>Closing cap - Recessed black end cap 9004-R/B Material:PC, colour:black.</p>	<p>Code 81003</p>
		<p>Ceiling rose - 1.5m white pendant luminaires kit + bracket (9000-KIT5-1,5-W) Material:plastic, colour:white.</p>	<p>Code 81012</p>
		<p>Closing cap - Recessed white end cap 9004-R/W Material:PC, colour:white.</p>	<p>Code 81002</p>
		<p>Ceiling rose - 1.5m black pendant luminaires kit + bracket ((9000-KIT5-1,5-B) Material:plastic, colour:black.</p>	<p>Code 81014</p>
		<p>Ceiling rose - 5m white pendant luminaires kit + bracket (9000-KIT5-5-W) Material:plastic, colour:white.</p>	<p>Code 81013</p>
		<p>Ceiling rose - 5m black pendant luminaires kit + bracket (9000-KIT5-5-B) Material:plastic, colour:black.</p>	<p>Code 81015</p>
		<p>Suspensions - Black rigid suspension 1m (S-9000-P3-B) Material:plastic, colour:black.</p>	<p>Code 81022</p>



		<p>Bracket - Anodized fixing bracket (S-9000/131) L=35mm, H=14mm, D=24mm. Material:Aluminium, colour:translucent.</p>	<table border="1"> <thead> <tr> <th>Finish</th> <th>Code</th> </tr> </thead> <tbody> <tr> <td>Anod. Al.</td> <td>81086</td> </tr> </tbody> </table>	Finish	Code	Anod. Al.	81086
Finish	Code						
Anod. Al.	81086						
		<p>Suspensions - White rigid suspension 1m (S-9000-P3-W) Material:plastic, colour:white.</p>	<table border="1"> <thead> <tr> <th>Code</th> </tr> </thead> <tbody> <tr> <td>81021</td> </tr> </tbody> </table>	Code	81021		
Code							
81021							
		<p>Bracket - White fixing braket (S-9000/131-W) L=35mm, H=14mm, D=24mm. Material:Aluminium, colour:white, processing:Coating.</p>	<table border="1"> <thead> <tr> <th>Finish</th> <th>Code</th> </tr> </thead> <tbody> <tr> <td>White</td> <td>81087</td> </tr> </tbody> </table>	Finish	Code	White	81087
Finish	Code						
White	81087						
		<p>Bracket - Black fixing braket (S-9000/131-B) L=35mm, H=14mm, D=24mm. Material:Aluminium, colour:Black, processing:Coating.</p>	<table border="1"> <thead> <tr> <th>Finish</th> <th>Code</th> </tr> </thead> <tbody> <tr> <td>Black</td> <td>81088</td> </tr> </tbody> </table>	Finish	Code	Black	81088
Finish	Code						
Black	81088						
		<p>Cable cover - White recessed cover (S-9001-R/6-W) Material:PC, colour:white.</p>	<table border="1"> <thead> <tr> <th>Code</th> </tr> </thead> <tbody> <tr> <td>81069</td> </tr> </tbody> </table>	Code	81069		
Code							
81069							
		<p>Cable cover - Black recessed cover (S-9001-R/6-B) Material:PC, colour:black.</p>	<table border="1"> <thead> <tr> <th>Code</th> </tr> </thead> <tbody> <tr> <td>81070</td> </tr> </tbody> </table>	Code	81070		
Code							
81070							
		<p>Cable cover - White cover for recessed L junction (S-9011-R/6-W) Material:PC, colour:white.</p>	<table border="1"> <thead> <tr> <th>Code</th> </tr> </thead> <tbody> <tr> <td>81075</td> </tr> </tbody> </table>	Code	81075		
Code							
81075							
		<p>Cable cover Material:PC, colour:black.</p>	<table border="1"> <thead> <tr> <th>Code</th> </tr> </thead> <tbody> <tr> <td>81076</td> </tr> </tbody> </table>	Code	81076		
Code							
81076							

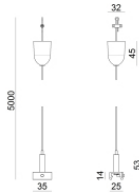


		<p>Cable cover - White cover for recessed X junction (S-9017-R/6-W) Material:PC, colour:white.</p>	<p>Code <u>81081</u></p>
		<p>Cable cover - Black cover for recessed X junction (S-9017-R/6-B) Material:PC, colour:black.</p>	<p>Code <u>81082</u></p>
		<p>White three-phase adapter (9009-4/W)</p>	<p>Code <u>81091</u></p>
		<p>Black three-phase adapter (9009-4/B)</p>	<p>Code <u>81093</u></p>
		<p>Tool - Cutter S-9000/T</p>	<p>Code <u>81005</u></p>
		<p>Suspensions - 1.5m white pendant luminaires kit (9000-KIT3-1,5-W) Material:plastic, colour:white.</p>	<p>Code <u>81006</u></p>
		<p>Suspensions - 1.5m black pendant luminaires kit (9000-KIT3-1,5-B) Material:plastic, colour:black.</p>	<p>Code <u>81008</u></p>
		<p>Suspensions - 5m white pendant luminaires kit (9000-KIT3-5-W) Material:plastic, colour:white.</p>	<p>Code <u>81007</u></p>



Suspensions - White rigid suspension clip (S-9000-P2-W)
 Material:plastic, colour:white.

Code
81018



Suspensions - 5m black pendant luminaires kit (9000-KIT3-5-B)
 Material:plastic, colour:black.

Code
81009




Suspensions - Black rigid suspension clip (S-9000-P2-B)
 Material:plastic, colour:black.

Code
81019



Bracket - Anodized stiffening bracket (S-9000/333)
 L=180mm, H=24mm, D=26mm.


Material:Aluminium, colour:Anodised Aluminum, processing:Anodisation.

Finish
 **Code**
81024



Bracket - White stiffening bracket (S-9000/333-W)
 L=180mm, H=24mm, D=20mm.


Material:Aluminium, colour:white RAL 9010, processing:Coating.

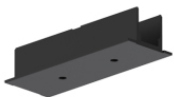
Finish
 **Code**
81025



Bracket - Black stiffening bracket (S-9000/333-B)
 L=180mm, H=24mm, D=20mm.

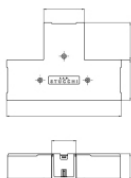
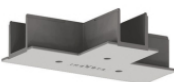
Material:Aluminium, colour:black RAL 9005, processing:Coating.

Finish
 **Code**
81026



Cable cover - Black cover for recessed junction (S-9010-R/6-B)
 Material:PC, colour:black.

Code
81073



Cable cover - White cover for recessed T junction (S-9013-R/6-W)
 Material:PC, colour:white.

Code
81078



		<p>Cable cover - White cover for recessed junction (S-9010-R/6-W) Material:PC, colour:white.</p>	<p>Code <u>81072</u></p>
		<p>Cable cover - Black cover for recessed T junction (S-9013-R/6-B) Material:PC, colour:black.</p>	<p>Code <u>81079</u></p>
		<p>Cable cover Material:black, colour:black.</p>	<p>Code <u>83250</u></p>
		<p>Cable cover Material:white.</p>	<p>Code <u>83249</u></p>
		<p>Closing cap - White gasket (S-9001/115-W) Material:white.</p>	<p>Code <u>81084</u></p>
		<p>Closing cap - Black gasket (S-9001/115-B) Material:black, colour:black.</p>	<p>Code <u>81085</u></p>
		<p>White three-phase/DALI adapter (9009/W)</p>	<p>Code <u>81094</u></p>
		<p>Black three-phase/DALI adapter (9009/B)</p>	<p>Code <u>81095</u></p>

