

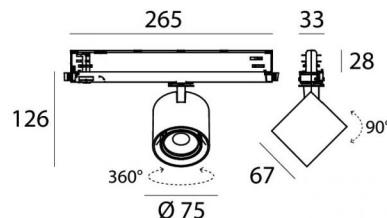
# Optus\_T V2



Projectors | 176-264 V AC /176-280 V DC  
1 arrayLED 10 W DC - 12 W AC | CRI 98



**C00999BBNML**



Technical data	
Type	Track
Installation position	Ceiling
Installation environment	Indoor
Light Source	LED
Circuit structure	arrayLED
Optics	Medium Flood
Light emission direction	frontal
Nominal power	10 W DC
Total Power	12 W
Source lumens	1822 lm
Nominal input voltage	220 - 240 V AC
Input voltage range	176 - 264 V AC
Frequency	50 - 60 Hz
CCT / Tone	4000 K
Colour rendering index	98 Ra
C.C. / C.V.	AC
Safety class	2
IP	IP20
Glow wire test	850°
Direct mounting on normally flammable surfaces	Yes
CE	Yes
Driver included	Driver
Dimmable article	DALI-2 - PUSH DIM
Directional	Swivelling
total angle (vertical plane)	90 °
total angle (horizontal plane)	360 °
Tilting	No
Walk-over	No
Drive-over	No
Cable included	No
Resin potting	No
Type of light emission	Single emission
Net weight	0.412 Kg
Electrostatic discharge protection	Yes
Surge protection	2 KV

## Finishing casing

Material	Die-cast Aluminium EN AB - 46100
Colour	Black
Processing	Powder coating

The driver contained in the device complies with IEC 61347-2-13 annex J, and can therefore be powered by centralized power systems.



Projectors | 176-264 V AC /176-280 V DC | 1 arrayLED 10 W DC - 12 W AC | CRI 98 | Base  
**C00999BBNML**

Single emission projectors for indoor application. The natural white LED light source with a medium flood light distribution is composed of 1 arrayed LEDs with CCT of 4000 K and a CRI 98; the source luminous flux is 1822 lm, with a 182.2 lm/W nominal luminous efficacy.

The device body is made of die-cast aluminium en ab - 46100 and features a black finish, processed by means of powder coating. The ingress protection degree is IP20; the total weight is of 0.412 kg.

The total absorbed power is 12 W.

The device features protection class II and can be ceiling-mounted.

Compliant with the EN 60598-1 standard and its specific provisions.

### Energy efficiency class

This product contains a light source of energy efficiency class F.

### Illuminotechnical Features

Light Output Ratio (LOR)	69 %
Source lumens	1822 lm
Delivered lumens	1270 lm
Consumption	12 W
Luminaire efficacy	105 lm/W
Colour temperature	4000 K
Standard Deviation of Colour Matching	2 Step MacAdam
Colour rendering index	98 Ra
Black Body Locus	On
Standard Operating Ambient Temperature	-20 / +50°C
Ordinary temperature on the glass	40°C

### LED Life / Failure Ratio

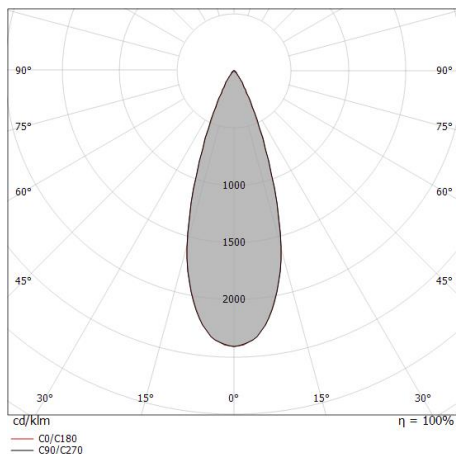
L70 B10 C0 252000h (at Tj 65 Ta 25)

### UGR

UGR axial	18.7
UGR transversal	18.8
X=4H   Y=8H	S=0.25H
Reflection factor	70/50/20

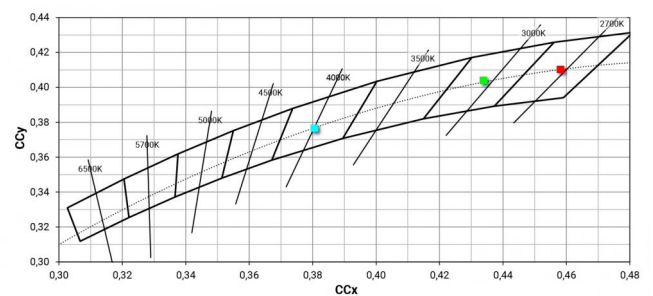
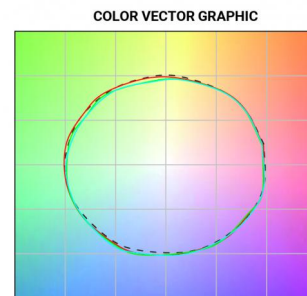
### OPTICAL

C0/C180 optics	36°
Light distribution symmetry	Symmetrical



Distance [m]	Cone diameter [m]	illuminance [lx]
0.5	0.32 0.33	E(0°) 12224 E(C90) 18.0° 5302 E(C0) 18.1° 5249
1.0	0.65 0.65	E(0°) 3056 E(C90) 18.0° 1326 E(C0) 18.1° 1312
1.5	0.97 0.98	E(0°) 1358 E(C90) 18.0° 569 E(C0) 18.1° 563
2.0	1.30 1.31	E(0°) 764 E(C90) 18.0° 331 E(C0) 18.1° 328
2.5	1.62 1.63	E(0°) 489 E(C90) 18.0° 212 E(C0) 18.1° 210
3.0	1.95 1.96	E(0°) 340 E(C90) 18.0° 147 E(C0) 18.1° 146

— C0/C180 (Half-peak divergence: 36.2°)  
 — C90/C270 (Half-peak divergence: 36.0°)





	<p>Optics                      Light distribution: adjustable,Cover material: uv resistant polycarbonate</p>	<p><b>Code</b>  <u>C-U100002</u></p>
	<p>Optics                      Light distribution: adjustable,Cover material: ,uv resistant polycarbonate,uv resistant polycarbonate,uv resistant polycarbonate</p>	<p><b>Code</b>  <u>C-U100003</u></p>
	<p>Optics                      Light distribution: adjustable,Cover material: ,uv resistant polycarbonate,uv resistant polycarbonate,uv resistant polycarbonate</p>	<p><b>Code</b>  <u>C-U100004</u></p>
	<p>Anti-glare - Accessory for focal kit with code 83347.                      Anti-glare Type: honeycomb louvre.                      Material:Pom-C, colour:Black.</p>	<p><b>Code</b>  <u>99841</u></p>
	<p>Anti-glare                      Anti-glare Type: honeycomb louvre.                      Material:Pom-C, colour:Black.</p>	<p><b>Code</b>  <u>C-U300043</u></p>
	<p>Diffuser                      Diffuser Type: elliptical filter</p>	<p><b>Code</b>  <u>C-U300044</u></p>
	<p>Anti-glare                      Anti-glare Type: cylindrical screen.                      Material:Pom-C, colour:Black.</p>	<p><b>Code</b>  <u>C-U300045</u></p>
	<p>Anti-glare                      Anti-glare Type: 45° cylindrical screen.                      Material:Pom-C, colour:Black.</p>	<p><b>Code</b>  <u>C-U300046</u></p>



	<p>Anti-glare                      Anti-glare Type: cross louvres.                      Material:Pom-C, colour:Black.</p>	<p><b>Code</b>  <u>C-U300047</u></p>	
		<p>Electronic accessory - TWIL-DALI controller for devices with DALI protocol installed on three-phase track.                      installation position: ceiling L=90mm, H=124mm, D=45mm.                      Material:ABS Plastic, colour:black.</p>	<p><b>Code</b>  <u>C-E700008</u></p>
	<p>Optics                      Light distribution: adjustable,Cover material: ,aluminium</p>	<p><b>Code</b>  <u>83347</u></p>	
		<p>Track                      Length: 1000mm; Type of track: Standard.                      Material:Aluminium, colour:White, processing:Coating.</p>	<p><b>Finish</b>    <b>Code</b>  <span style="border: 1px solid black; padding: 2px;">White</span>    <u>83336</u></p>
		<p>Track                      Length: 2000mm; Type of track: Standard.                      Material:Aluminium, colour:White, processing:Coating.</p>	<p><b>Finish</b>    <b>Code</b>  <span style="border: 1px solid black; padding: 2px;">White</span>    <u>83337</u></p>
		<p>Track                      Length: 3000mm; Type of track: Standard.                      Material:Aluminium, colour:White, processing:Coating.</p>	<p><b>Finish</b>    <b>Code</b>  <span style="border: 1px solid black; padding: 2px;">White</span>    <u>83338</u></p>
		<p>Track                      Length: 1000mm; Type of track: Standard.                      Material:Aluminium, colour:Black, processing:Coating.</p>	<p><b>Finish</b>    <b>Code</b>  <span style="background-color: black; color: white; padding: 2px;">Black</span>    <u>83339</u></p>
		<p>Track                      Length: 2000mm; Type of track: Standard.                      Material:Aluminium, colour:Black, processing:Coating.</p>	<p><b>Finish</b>    <b>Code</b>  <span style="background-color: black; color: white; padding: 2px;">Black</span>    <u>83340</u></p>



		<p>Track - Three-phase Recessed White DALI Track, 1 m (9000-1/W-R)                      Length: 1000mm; Type of track: Standard.                      Material:Aluminium, colour:White, processing:Coating.</p>	<table border="1"> <thead> <tr> <th>Finish</th> <th>Code</th> </tr> </thead> <tbody> <tr> <td>White</td> <td>80990</td> </tr> </tbody> </table>	Finish	Code	White	80990
Finish	Code						
White	80990						
		<p>Track - Three-phase Recessed White DALI Track, 2 m (9000-2/W-R)                      Length: 2000mm; Type of track: Standard.                      Material:Aluminium, colour:White, processing:Coating.</p>	<table border="1"> <thead> <tr> <th>Finish</th> <th>Code</th> </tr> </thead> <tbody> <tr> <td>White</td> <td>80991</td> </tr> </tbody> </table>	Finish	Code	White	80991
Finish	Code						
White	80991						
		<p>Track                      Length: 3000mm; Type of track: Standard.                      Material:Aluminium, colour:Black, processing:Coating.</p>	<table border="1"> <thead> <tr> <th>Finish</th> <th>Code</th> </tr> </thead> <tbody> <tr> <td>Black</td> <td>83341</td> </tr> </tbody> </table>	Finish	Code	Black	83341
Finish	Code						
Black	83341						
		<p>Track - Three-phase Recessed Grey DALI Track, 1 m (9000-1/B-R)                      Length: 1000mm; Type of track: Standard.                      Material:Aluminium, colour:Black, processing:Coating.</p>	<table border="1"> <thead> <tr> <th>Finish</th> <th>Code</th> </tr> </thead> <tbody> <tr> <td>Black</td> <td>80993</td> </tr> </tbody> </table>	Finish	Code	Black	80993
Finish	Code						
Black	80993						
		<p>Track - Three-phase Recessed White DALI Track, 3 m ( 9000-3/W-R)                      Length: 3000mm; Type of track: Standard.                      Material:Aluminium, colour:White, processing:Coating.</p>	<table border="1"> <thead> <tr> <th>Finish</th> <th>Code</th> </tr> </thead> <tbody> <tr> <td>White</td> <td>80992</td> </tr> </tbody> </table>	Finish	Code	White	80992
Finish	Code						
White	80992						
		<p>Track - Three-phase Recessed Black DALI Track, 2 m (9000-1/B-R)                      Length: 2000mm; Type of track: Standard.                      Material:Aluminium, colour:Black, processing:Coating.</p>	<table border="1"> <thead> <tr> <th>Finish</th> <th>Code</th> </tr> </thead> <tbody> <tr> <td>Black</td> <td>80994</td> </tr> </tbody> </table>	Finish	Code	Black	80994
Finish	Code						
Black	80994						
		<p>Track - Three-phase Recessed Black DALI Track, 3 m (9000-3/B-R)                      Length: 3000mm; Type of track: Standard.                      Material:Aluminium, colour:Black, processing:Coating.</p>	<table border="1"> <thead> <tr> <th>Finish</th> <th>Code</th> </tr> </thead> <tbody> <tr> <td>Black</td> <td>80995</td> </tr> </tbody> </table>	Finish	Code	Black	80995
Finish	Code						
Black	80995						
		<p>Power supply - White Right power supply header (9001/W)                      Material:PC, colour:white.</p>	<table border="1"> <thead> <tr> <th>Code</th> </tr> </thead> <tbody> <tr> <td>81033</td> </tr> </tbody> </table>	Code	81033		
Code							
81033							



		<p>Power supply - Black Right power supply header (9001/B)                      Material:PC, colour:black.</p>	<p><b>Code</b>  <u>81034</u></p>
		<p>Power supply - White left power supply header (9002/W)                      Material:PC, colour:white.</p>	<p><b>Code</b>  <u>81036</u></p>
		<p>Power supply - Black left power supply header (9002/B)                      Material:PC, colour:black.</p>	<p><b>Code</b>  <u>81037</u></p>
		<p>Junction - White power supply junction - central (9010/W)                      Type linear.                      Material:PC, colour:white.</p>	<p><b>Finish</b>  <span style="border: 1px solid black; padding: 2px;">White</span>      <b>Code</b>  <u>81042</u></p>
		<p>Junction - Black power supply junction - centrale (9010/B)                      Type linear.                      Material:PC, colour:black.</p>	<p><b>Finish</b>  <span style="background-color: black; color: white; padding: 2px;">Black</span>      <b>Code</b>  <u>81043</u></p>
		<p>Junction - Flexible white junction (9018/W)                      Type flexible curve.                      Material:PC, colour:white.</p>	<p><b>Finish</b>  <span style="border: 1px solid black; padding: 2px;">White</span>      <b>Code</b>  <u>81066</u></p>
		<p>Junction - Left white T junction - external (9013/W)                      Type linear.                      Material:PC, colour:white.</p>	<p><b>Finish</b>  <span style="border: 1px solid black; padding: 2px;">White</span>      <b>Code</b>  <u>81051</u></p>
		<p>Junction - Flexible black junction (9018/B)                      Type flexible curve.                      Material:PC, colour:black.</p>	<p><b>Finish</b>  <span style="background-color: black; color: white; padding: 2px;">Black</span>      <b>Code</b>  <u>81067</u></p>

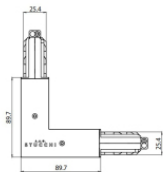


		<p>Junction - Black left T junction - external (9013/B)                      Type linear.                      Material:PC, colour:black.</p>	<table border="1"> <thead> <tr> <th>Finish</th> <th>Code</th> </tr> </thead> <tbody> <tr> <td>Black</td> <td>81052</td> </tr> </tbody> </table>	Finish	Code	Black	81052
Finish	Code						
Black	81052						
		<p>Junction - Right black T junction - external (9014/B)                      Type linear.                      Material:PC, colour:black.</p>	<table border="1"> <thead> <tr> <th>Finish</th> <th>Code</th> </tr> </thead> <tbody> <tr> <td>Black</td> <td>81055</td> </tr> </tbody> </table>	Finish	Code	Black	81055
Finish	Code						
Black	81055						
		<p>Junction - Right white T junction - external (9014/W)                      Type linear.                      Material:PC, colour:white.</p>	<table border="1"> <thead> <tr> <th>Finish</th> <th>Code</th> </tr> </thead> <tbody> <tr> <td>White</td> <td>81054</td> </tr> </tbody> </table>	Finish	Code	White	81054
Finish	Code						
White	81054						
		<p>Closing cap - Black end cap 9004/B                      Material:PC, colour:black.</p>	<table border="1"> <thead> <tr> <th>Code</th> </tr> </thead> <tbody> <tr> <td>81000</td> </tr> </tbody> </table>	Code	81000		
Code							
81000							
		<p>Junction - White electrical junction - internal (9003/W)                      Type linear.                      Material:PC, colour:white.</p>	<table border="1"> <thead> <tr> <th>Finish</th> <th>Code</th> </tr> </thead> <tbody> <tr> <td>White</td> <td>81039</td> </tr> </tbody> </table>	Finish	Code	White	81039
Finish	Code						
White	81039						
		<p>Junction - Black electrical junction - internal (9003/B)                      Type linear.                      Material:PC, colour:black.</p>	<table border="1"> <thead> <tr> <th>Finish</th> <th>Code</th> </tr> </thead> <tbody> <tr> <td>Black</td> <td>81040</td> </tr> </tbody> </table>	Finish	Code	Black	81040
Finish	Code						
Black	81040						
		<p>Junction - White L junction - internal (9011/W)                      Type linear.                      Material:PC, colour:white.</p>	<table border="1"> <thead> <tr> <th>Finish</th> <th>Code</th> </tr> </thead> <tbody> <tr> <td>White</td> <td>81045</td> </tr> </tbody> </table>	Finish	Code	White	81045
Finish	Code						
White	81045						
		<p>Junction - Black L junction - internal (9011/B)                      Type linear.                      Material:PC, colour:black.</p>	<table border="1"> <thead> <tr> <th>Finish</th> <th>Code</th> </tr> </thead> <tbody> <tr> <td>Black</td> <td>81046</td> </tr> </tbody> </table>	Finish	Code	Black	81046
Finish	Code						
Black	81046						



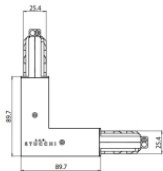
Closing cap - White end cap 9004/W  
 Material:PC, colour:white.

**Code**  
 80999



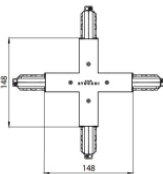
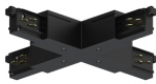
Junction - Black L junction - external (9012/B)  
 Type linear.  
 Material:PC, colour:black.

**Finish**  
 Black **Code**  
 81049



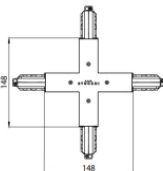
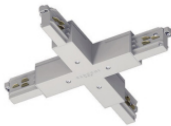
Junction - White L junction - external (9012/W)  
 Type linear.  
 Material:PC, colour:white.

**Finish**  
 White **Code**  
 81048



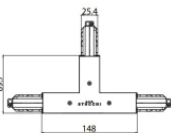
Junction - Black X junction (9017/B)  
 Type linear.  
 Material:PC, colour:black.

**Finish**  
 Black **Code**  
 81064



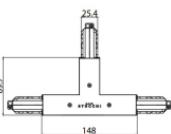
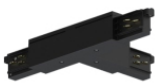
Junction - White X junction (9017/W)  
 Type linear.  
 Material:PC, colour:white.

**Finish**  
 White **Code**  
 81063



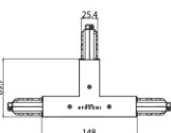
Junction - Left white T junction - internal (9015/W)  
 Type linear.  
 Material:PC, colour:white.

**Finish**  
 White **Code**  
 81057



Junction - Left black T junction - internal (9015/B)  
 Type linear.  
 Material:PC, colour:black.

**Finish**  
 Black **Code**  
 81058



Junction - Right White T junction - internal (9016/W)  
 Type linear.  
 Material:PC, colour:white.

**Finish**  
 White **Code**  
 81060





		<p>Junction - Right black T junction - internal (9016/B)                      Type linear.                      Material:PC, colour:black.</p>	<p><b>Finish</b>  <span style="background-color: black; color: white; padding: 2px;">Black</span></p> <p><b>Code</b>  <span style="border-bottom: 1px solid black;">81061</span></p>
		<p>Closing cap - Recessed black end cap 9004-R/B                      Material:PC, colour:black.</p>	<p><b>Code</b>  <span style="border-bottom: 1px solid black;">81003</span></p>
		<p>Ceiling rose - 1.5m white pendant luminaires kit + bracket (9000-KIT5-1,5-W)                      Material:plastic, colour:white.</p>	<p><b>Code</b>  <span style="border-bottom: 1px solid black;">81012</span></p>
		<p>Closing cap - Recessed white end cap 9004-R/W                      Material:PC, colour:white.</p>	<p><b>Code</b>  <span style="border-bottom: 1px solid black;">81002</span></p>
		<p>Ceiling rose - 1.5m black pendant luminaires kit + bracket ((9000-KIT5-1,5-B)                      Material:plastic, colour:black.</p>	<p><b>Code</b>  <span style="border-bottom: 1px solid black;">81014</span></p>
		<p>Ceiling rose - 5m white pendant luminaires kit + bracket (9000-KIT5-5-W)                      Material:plastic, colour:white.</p>	<p><b>Code</b>  <span style="border-bottom: 1px solid black;">81013</span></p>
		<p>Ceiling rose - 5m black pendant luminaires kit + bracket (9000-KIT5-5-B)                      Material:plastic, colour:black.</p>	<p><b>Code</b>  <span style="border-bottom: 1px solid black;">81015</span></p>
		<p>Suspensions - Black rigid suspension 1m (S-9000-P3-B)                      Material:plastic, colour:black.</p>	<p><b>Code</b>  <span style="border-bottom: 1px solid black;">81022</span></p>



		<p>Bracket - Anodized fixing bracket (S-9000/131)                      L=35mm, H=14mm, D=24mm.                      Material:Aluminium, colour:translucent.</p>	<p><b>Finish</b>                      Anod. Al.</p>	<p><b>Code</b>                      81086</p>
		<p>Suspensions - White rigid suspension 1m (S-9000-P3-W)                      Material:plastic, colour:white.</p>		<p><b>Code</b>                      81021</p>
		<p>Bracket - White fixing braket (S-9000/131-W)                      L=35mm, H=14mm, D=24mm.                      Material:Aluminium, colour:white, processing:Coating.</p>	<p><b>Finish</b>                      White</p>	<p><b>Code</b>                      81087</p>
		<p>Bracket - Black fixing braket (S-9000/131-B)                      L=35mm, H=14mm, D=24mm.                      Material:Aluminium, colour:Black, processing:Coating.</p>	<p><b>Finish</b>                      Black</p>	<p><b>Code</b>                      81088</p>
		<p>Cable cover - White recessed cover (S-9001-R/6-W)                      Material:PC, colour:white.</p>		<p><b>Code</b>                      81069</p>
		<p>Cable cover - Black recessed cover (S-9001-R/6-B)                      Material:PC, colour:black.</p>		<p><b>Code</b>                      81070</p>
		<p>Cable cover - White cover for recessed L junction (S-9011-R/6-W)                      Material:PC, colour:white.</p>		<p><b>Code</b>                      81075</p>
		<p>Cable cover                      Material:PC, colour:black.</p>		<p><b>Code</b>                      81076</p>

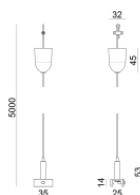


		<p>Cable cover - White cover for recessed X junction (S-9017-R/6-W)            Material:PC, colour:white.</p>	<p><b>Code</b>  <u>81081</u></p>
		<p>Cable cover - Black cover for recessed X junction (S-9017-R/6-B)            Material:PC, colour:black.</p>	<p><b>Code</b>  <u>81082</u></p>
		<p>White three-phase adapter (9009-4/W)</p>	<p><b>Code</b>  <u>81091</u></p>
		<p>Black three-phase adapter (9009-4/B)</p>	<p><b>Code</b>  <u>81093</u></p>
		<p>Tool - Cutter S-9000/T</p>	<p><b>Code</b>  <u>81005</u></p>
		<p>Suspensions - 1.5m white pendant luminaires kit (9000-KIT3-1,5-W)            Material:plastic, colour:white.</p>	<p><b>Code</b>  <u>81006</u></p>
		<p>Suspensions - 1.5m black pendant luminaires kit (9000-KIT3-1,5-B)            Material:plastic, colour:black.</p>	<p><b>Code</b>  <u>81008</u></p>
		<p>Suspensions - 5m white pendant luminaires kit (9000-KIT3-5-W)            Material:plastic, colour:white.</p>	<p><b>Code</b>  <u>81007</u></p>



Suspensions - White rigid suspension clip (S-9000-P2-W)  
Material:plastic, colour:white.

**Code**  
81018



Suspensions - 5m black pendant luminaires kit (9000-KIT3-5-B)  
Material:plastic, colour:black.

**Code**  
81009



Suspensions - Black rigid suspension clip (S-9000-P2-B)  
Material:plastic, colour:black.

**Code**  
81019



Bracket - Anodized stiffening bracket (S-9000/333)  
L=180mm, H=24mm, D=26mm.

Material:Aluminium, colour:Anodised Aluminum, processing:Anodisation.

**Finish**  
 **Code**  
81024



Bracket - White stiffening bracket (S-9000/333-W)

L=180mm, H=24mm, D=20mm.

Material:Aluminium, colour:white RAL 9010, processing:Coating.

**Finish**  
 **Code**  
81025

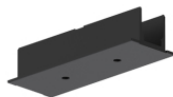


Bracket - Black stiffening bracket (S-9000/333-B)

L=180mm, H=24mm, D=20mm.

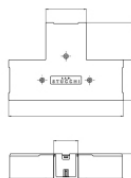
Material:Aluminium, colour:black RAL 9005, processing:Coating.

**Finish**  
 **Code**  
81026



Cable cover - Black cover for recessed junction (S-9010-R/6-B)  
Material:PC, colour:black.

**Code**  
81073



Cable cover - White cover for recessed T junction (S-9013-R/6-W)  
Material:PC, colour:white.

**Code**  
81078



		<p>Cable cover - White cover for recessed junction (S-9010-R/6-W)            Material:PC, colour:white.</p>	<p><b>Code</b>  <u>81072</u></p>
		<p>Cable cover - Black cover for recessed T junction (S-9013-R/6-B)            Material:PC, colour:black.</p>	<p><b>Code</b>  <u>81079</u></p>
		<p>Cable cover            Material:black, colour:black.</p>	<p><b>Code</b>  <u>83250</u></p>
		<p>Cable cover            Material:white.</p>	<p><b>Code</b>  <u>83249</u></p>
		<p>Closing cap - White gasket (S-9001/115-W)            Material:white.</p>	<p><b>Code</b>  <u>81084</u></p>
		<p>Closing cap - Black gasket (S-9001/115-B)            Material:black, colour:black.</p>	<p><b>Code</b>  <u>81085</u></p>
		<p>White three-phase/DALI adapter (9009/W)</p>	<p><b>Code</b>  <u>81094</u></p>
		<p>Black three-phase/DALI adapter (9009/B)</p>	<p><b>Code</b>  <u>81095</u></p>

