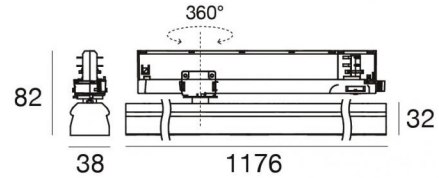




Projectors | 176-264 V AC /176-280 V DC  
168 topLED 25 W DC - 27.5 W AC | CRI 90  
**C00880BBMDI**



Technical data	
Type	Track
Installation position	Ceiling
Installation environment	Indoor
Light Source	LED
Circuit structure	topLED
Optics	Diffused
Light emission direction	downward
Nominal power	25 W DC
Total Power	27.5 W
Source lumens	3607 lm
Nominal input voltage	220 - 240 V AC
Input voltage range	176 - 264 V AC
Frequency	50 - 60 Hz
CCT / Tone	2700 K
Colour rendering index	90 Ra
C.C. / C.V.	AC
Safety class	2
IP	IP40
Glow wire test	850°
Direct mounting on normally flammable surfaces	Yes
CE	Yes
Driver included	Driver
Dimmable article	No
Directional	Swivelling
total angle (horizontal plane)	360 °
Tilting	No
Walk-over	No
Drive-over	No
Cable included	No
Resin potting	No
Type of light emission	Double emission
Net weight	0.8 Kg
Electrostatic discharge protection	Yes
Surge protection	2 KV
Optics technology	Dot free

Finishing casing	
Material	Aluminium 6060
Colour	Black
Processing	Powder coating
Finishing diffuser	
Material	UV Resistant Polycarbonate
Colour	opaline



Projectors | 176-264 V AC /176-280 V DC | 168 topLED 25 W DC - 27.5 W AC | CRI 90 | Base

**C00880BBMDI**

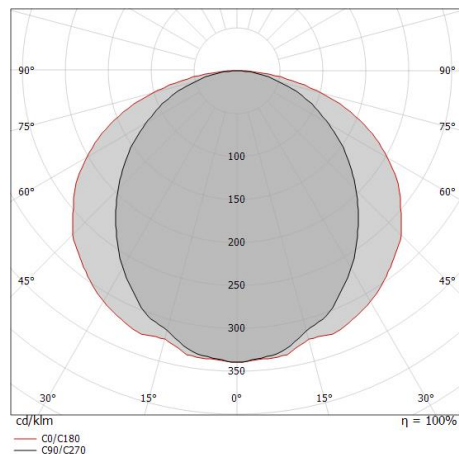
Double emission projectors for indoor application. The super warm white LED light source with a diffused light distribution is composed of 168 topLEDs with CCT of 2700 K and a CRI 90; the source luminous flux is 3607 lm, with a 144.3 lm/W nominal luminous efficacy.

The device body is made of aluminium 6060 and features a black finish, processed by means of powder coating; the diffuser is made of uv resistant polycarbonate. The ingress protection degree is IP40; the total weight is of 0.8 kg.

The total absorbed power is 27.5 W.

The device features protection class II and can be ceiling-mounted.

Compliant with the EN 60598-1 standard and its specific provisions.



Distance [m]	Cone diameter [m]	illuminance [lx]
0.5	1.21 2.19	E(0°) 3680 E(C90) 477 E(C0) 132
1.0	2.42 4.39	E(0°) 920 E(C90) 119 E(C0) 33
1.5	3.63 6.58	E(0°) 409 E(C90) 53 E(C0) 15
2.0	4.84 8.78	E(0°) 230 E(C90) 30 E(C0) 8
2.5	6.04 10.97	E(0°) 147 E(C90) 19 E(C0) 5
3.0	7.25 13.17	E(0°) 102 E(C90) 13 E(C0) 4

— C0/C180 (Half-peak divergence: 131.0°)  
— C90/C270 (Half-peak divergence: 100.8°)

### Energy efficiency class

This product contains a light source of energy efficiency class E.

### Illuminotechnical Features

Light Output Ratio (LOR)	75 %
Source lumens	3607 lm
Delivered lumens	2708 lm
Consumption	27.5 W
Luminaire efficacy	98 lm/W
Colour temperature	2700 K
Standard Deviation of Colour Matching	2 Step MacAdam
Colour rendering index	90 Ra
Standard Operating Ambient Temperature	-20 / +50°C

### LED Life / Failure Ratio

L70 B10 C0 145770h (at Tj 65 Ta 25 )

### UGR

UGR axial	26.1
UGR transversal	29.2
X=4H   Y=8H	S=0.25H
Reflection factor	70/50/20

### OPTICAL

C90/C270 optics	101°
C0/C180 optics	131°
Light distribution simmetry	Symmetrical 2 assis



		<p>Track                      Length: 2000mm; Type of track: Standard.                      Material:Aluminium, colour:White, processing:Coating.</p>	<p><b>Finish</b>                      White</p> <p><b>Code</b>                      83337</p>
		<p>Track                      Length: 1000mm; Type of track: Standard.                      Material:Aluminium, colour:White, processing:Coating.</p>	<p><b>Finish</b>                      White</p> <p><b>Code</b>                      83336</p>
		<p>Closing cap - White gasket (S-9001/115-W)                      Material:white.</p>	<p><b>Code</b>                      81084</p>
		<p>Black three-phase/DALI adapter (9009/B)</p>	<p><b>Code</b>                      81095</p>
		<p>White three-phase/DALI adapter (9009/W)</p>	<p><b>Code</b>                      81094</p>
		<p>Closing cap - Black gasket (S-9001/115-B)                      Material:black, colour:black.</p>	<p><b>Code</b>                      81085</p>
		<p>Cable cover                      Material:black, colour:black.</p>	<p><b>Code</b>                      83250</p>
		<p>Cable cover                      Material:white.</p>	<p><b>Code</b>                      83249</p>

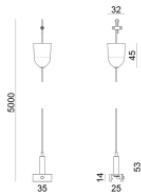


		<p>Cable cover - Black cover for recessed T junction (S-9013-R/6-B)            Material:PC, colour:black.</p>	<p><b>Code</b>  <u>81079</u></p>				
		<p>Cable cover - White cover for recessed T junction (S-9013-R/6-W)            Material:PC, colour:white.</p>	<p><b>Code</b>  <u>81078</u></p>				
		<p>Cable cover - Black cover for recessed junction (S-9010-R/6-B)            Material:PC, colour:black.</p>	<p><b>Code</b>  <u>81073</u></p>				
		<p>Cable cover - White cover for recessed junction (S-9010-R/6-W)            Material:PC, colour:white.</p>	<p><b>Code</b>  <u>81072</u></p>				
		<p>Bracket - Black stiffening bracket (S-9000/333-B)            L=180mm, H=24mm, D=20mm.            Material:Aluminium, colour:black RAL 9005, processing:Coating.</p>	<table border="1"> <thead> <tr> <th>Finish</th> <th>Code</th> </tr> </thead> <tbody> <tr> <td>Black</td> <td>81026</td> </tr> </tbody> </table>	Finish	Code	Black	81026
Finish	Code						
Black	81026						
		<p>Bracket - White stiffening bracket (S-9000/333-W)            L=180mm, H=24mm, D=20mm.            Material:Aluminium, colour:white RAL 9010, processing:Coating.</p>	<table border="1"> <thead> <tr> <th>Finish</th> <th>Code</th> </tr> </thead> <tbody> <tr> <td>White</td> <td>81025</td> </tr> </tbody> </table>	Finish	Code	White	81025
Finish	Code						
White	81025						
		<p>Bracket - Anodized stiffening bracket (S-9000/333)            L=180mm, H=24mm, D=26mm.            Material:Aluminium, colour:Anodised Aluminum, processing:Anodisation.</p>	<table border="1"> <thead> <tr> <th>Finish</th> <th>Code</th> </tr> </thead> <tbody> <tr> <td></td> <td>81024</td> </tr> </tbody> </table>	Finish	Code		81024
Finish	Code						
	81024						
		<p>Suspensions - Black rigid suspension clip (S-9000-P2-B)            Material:plastic, colour:black.</p>	<p><b>Code</b>  <u>81019</u></p>				



Suspensions - White rigid suspension clip (S-9000-P2-W)  
 Material:plastic, colour:white.

**Code**  
81018



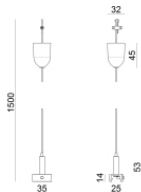
Suspensions - 5m black pendant luminaires kit (9000-KIT3-5-B)  
 Material:plastic, colour:black.

**Code**  
81009



Suspensions - 5m white pendant luminaires kit (9000-KIT3-5-W)  
 Material:plastic, colour:white.

**Code**  
81007



Suspensions - 1.5m black pendant luminaires kit (9000-KIT3-1,5-B)  
 Material:plastic, colour:black.

**Code**  
81008



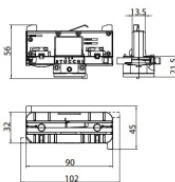
Suspensions - 1.5m white pendant luminaires kit (9000-KIT3-1,5-W)  
 Material:plastic, colour:white.

**Code**  
81006



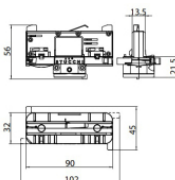
Tool - Cutter S-9000/T

**Code**  
81005



Black three-phase adapter (9009-4/B)

**Code**  
81093



White three-phase adapter (9009-4/W)

**Code**  
81091



		<p>Cable cover - Black cover for recessed X junction (S-9017-R/6-B)                      Material:PC, colour:black.</p>	<p><b>Code</b>  <u>81082</u></p>				
		<p>Cable cover - White cover for recessed X junction (S-9017-R/6-W)                      Material:PC, colour:white.</p>	<p><b>Code</b>  <u>81081</u></p>				
		<p>Cable cover                      Material:PC, colour:black.</p>	<p><b>Code</b>  <u>81076</u></p>				
		<p>Cable cover - White cover for recessed L junction (S-9011-R/6-W)                      Material:PC, colour:white.</p>	<p><b>Code</b>  <u>81075</u></p>				
		<p>Cable cover - Black recessed cover (S-9001-R/6-B)                      Material:PC, colour:black.</p>	<p><b>Code</b>  <u>81070</u></p>				
		<p>Cable cover - White recessed cover (S-9001-R/6-W)                      Material:PC, colour:white.</p>	<p><b>Code</b>  <u>81069</u></p>				
		<p>Bracket - Black fixing braket (S-9000/131-B)                      L=35mm, H=14mm, D=24mm.                      Material:Aluminium, colour:Black, processing:Coating.</p>	<table border="1"> <thead> <tr> <th>Finish</th> <th>Code</th> </tr> </thead> <tbody> <tr> <td>Black</td> <td>81088</td> </tr> </tbody> </table>	Finish	Code	Black	81088
Finish	Code						
Black	81088						
		<p>Bracket - White fixing braket (S-9000/131-W)                      L=35mm, H=14mm, D=24mm.                      Material:Aluminium, colour:white, processing:Coating.</p>	<table border="1"> <thead> <tr> <th>Finish</th> <th>Code</th> </tr> </thead> <tbody> <tr> <td>White</td> <td>81087</td> </tr> </tbody> </table>	Finish	Code	White	81087
Finish	Code						
White	81087						



Bracket - Anodized fixing bracket (S-9000/131)  
 L=35mm, H=14mm, D=24mm.  
 Material:Aluminium, colour:translucent.

Finish	Code
Anod. Al.	81086



Suspensions - Black rigid suspension 1m (S-9000-P3-B)  
 Material:plastic, colour:black.

Code
81022



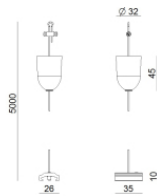
Suspensions - White rigid suspension 1m (S-9000-P3-W)  
 Material:plastic, colour:white.

Code
81021



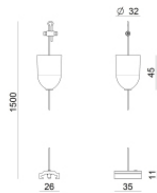
Ceiling rose - 5m black pendant luminaires kit + bracket (9000-KIT5-5-B)  
 Material:plastic, colour:black.

Code
81015



Ceiling rose - 5m white pendant luminaires kit + bracket (9000-KIT5-5-W)  
 Material:plastic, colour:white.

Code
81013



Ceiling rose - 1.5m black pendant luminaires kit + bracket ((9000-KIT5-1,5-B)  
 Material:plastic, colour:black.

Code
81014



Ceiling rose - 1.5m white pendant luminaires kit + bracket (9000-KIT5-1,5-W)  
 Material:plastic, colour:white.

Code
81012



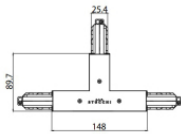
Closing cap - Recessed black end cap 9004-R/B  
 Material:PC, colour:black.

Code
81003



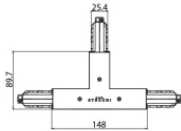
Closing cap - Recessed white end cap 9004-R/W  
 Material:PC, colour:white.

**Code**  
 81002



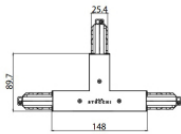
Junction - Right black T junction - internal (9016/B)  
 Type linear.  
 Material:PC, colour:black.

**Finish**  
 Black **Code**  
 81061



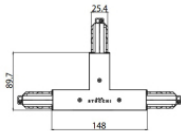
Junction - Right White T junction - internal (9016/W)  
 Type linear.  
 Material:PC, colour:white.

**Finish**  
 White **Code**  
 81060



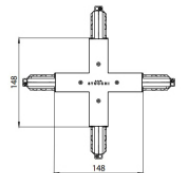
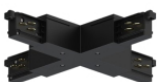
Junction - Left black T junction - internal (9015/B)  
 Type linear.  
 Material:PC, colour:black.

**Finish**  
 Black **Code**  
 81058



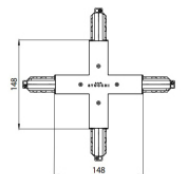
Junction - Left white T junction - internal (9015/W)  
 Type linear.  
 Material:PC, colour:white.

**Finish**  
 White **Code**  
 81057



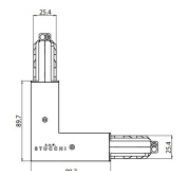
Junction - Black X junction (9017/B)  
 Type linear.  
 Material:PC, colour:black.

**Finish**  
 Black **Code**  
 81064



Junction - White X junction (9017/W)  
 Type linear.  
 Material:PC, colour:white.

**Finish**  
 White **Code**  
 81063



Junction - Black L junction - external (9012/B)  
 Type linear.  
 Material:PC, colour:black.

**Finish**  
 Black **Code**  
 81049





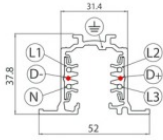
		<p>Junction - White L junction - external (9012/W)                      Type linear.                      Material:PC, colour:white.</p>	<p><b>Finish</b>                      White</p>	<p><b>Code</b>                      81048</p>
		<p>Junction - Black L junction - internal (9011/B)                      Type linear.                      Material:PC, colour:black.</p>	<p><b>Finish</b>                      Black</p>	<p><b>Code</b>                      81046</p>
		<p>Junction - White L junction - internal (9011/W)                      Type linear.                      Material:PC, colour:white.</p>	<p><b>Finish</b>                      White</p>	<p><b>Code</b>                      81045</p>
		<p>Junction - Black electrical junction - internal (9003/B)                      Type linear.                      Material:PC, colour:black.</p>	<p><b>Finish</b>                      Black</p>	<p><b>Code</b>                      81040</p>
		<p>Junction - White electrical junction - internal (9003/W)                      Type linear.                      Material:PC, colour:white.</p>	<p><b>Finish</b>                      White</p>	<p><b>Code</b>                      81039</p>
		<p>Closing cap - Black end cap 9004/B                      Material:PC, colour:black.</p>		<p><b>Code</b>                      81000</p>
		<p>Closing cap - White end cap 9004/W                      Material:PC, colour:white.</p>		<p><b>Code</b>                      80999</p>
		<p>Junction - Right black T junction - external (9014/B)                      Type linear.                      Material:PC, colour:black.</p>	<p><b>Finish</b>                      Black</p>	<p><b>Code</b>                      81055</p>



		<p>Junction - Right white T junction - external (9014/W)                      Type linear.                      Material:PC, colour:white.</p>	<p><b>Finish</b>                      White</p>	<p><b>Code</b>                      81054</p>
		<p>Junction - Black left T junction - external (9013/B)                      Type linear.                      Material:PC, colour:black.</p>	<p><b>Finish</b>                      Black</p>	<p><b>Code</b>                      81052</p>
		<p>Junction - Left white T junction - external (9013/W)                      Type linear.                      Material:PC, colour:white.</p>	<p><b>Finish</b>                      White</p>	<p><b>Code</b>                      81051</p>
		<p>Junction - Flexible black junction (9018/B)                      Type flexible curve.                      Material:PC, colour:black.</p>	<p><b>Finish</b>                      Black</p>	<p><b>Code</b>                      81067</p>
		<p>Junction - Flexible white junction (9018/W)                      Type flexible curve.                      Material:PC, colour:white.</p>	<p><b>Finish</b>                      White</p>	<p><b>Code</b>                      81066</p>
		<p>Junction - Black power supply junction - centrale (9010/B)                      Type linear.                      Material:PC, colour:black.</p>	<p><b>Finish</b>                      Black</p>	<p><b>Code</b>                      81043</p>
		<p>Junction - White power supply junction - central (9010/W)                      Type linear.                      Material:PC, colour:white.</p>	<p><b>Finish</b>                      White</p>	<p><b>Code</b>                      81042</p>
		<p>Power supply - Black left power supply header (9002/B)                      Material:PC, colour:black.</p>		<p><b>Code</b>                      81037</p>

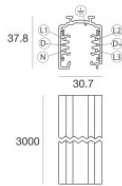
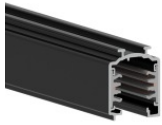


		<p>Power supply - White left power supply header (9002/W)                      Material:PC, colour:white.</p>	<p><b>Code</b>                      81036</p>
		<p>Power supply - Black Right power supply header (9001/B)                      Material:PC, colour:black.</p>	<p><b>Code</b>                      81034</p>
		<p>Power supply - White Right power supply header (9001/W)                      Material:PC, colour:white.</p>	<p><b>Code</b>                      81033</p>
		<p>Track - Three-phase Recessed Black DALI Track, 3 m (9000-3/B-R)                      Length: 3000mm; Type of track: Standard.                      Material:Aluminium, colour:Black, processing:Coating.</p>	<p><b>Finish</b>                      Black</p> <p><b>Code</b>                      80995</p>
		<p>Track - Three-phase Recessed Black DALI Track, 2 m (9000-1/B-R)                      Length: 2000mm; Type of track: Standard.                      Material:Aluminium, colour:Black, processing:Coating.</p>	<p><b>Finish</b>                      Black</p> <p><b>Code</b>                      80994</p>
		<p>Track - Three-phase Recessed Grey DALI Track, 1 m (9000-1/B-R)                      Length: 1000mm; Type of track: Standard.                      Material:Aluminium, colour:Black, processing:Coating.</p>	<p><b>Finish</b>                      Black</p> <p><b>Code</b>                      80993</p>
		<p>Track - Three-phase Recessed White DALI Track, 3 m (9000-3/W-R)                      Length: 3000mm; Type of track: Standard.                      Material:Aluminium, colour:White, processing:Coating.</p>	<p><b>Finish</b>                      White</p> <p><b>Code</b>                      80992</p>
		<p>Track - Three-phase Recessed White DALI Track, 2 m (9000-2/W-R)                      Length: 2000mm; Type of track: Standard.                      Material:Aluminium, colour:White, processing:Coating.</p>	<p><b>Finish</b>                      White</p> <p><b>Code</b>                      80991</p>



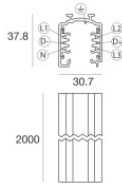
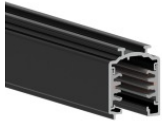
Track - Three-phase Recessed White DALI Track, 1 m (9000-1/W-R)  
 Length: 1000mm; Type of track: Standard.  
 Material:Aluminium, colour:White, processing:Coating.

Finish	Code
White	80990



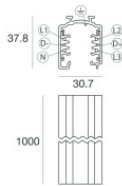
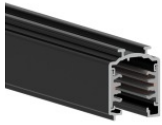
Track  
 Length: 3000mm; Type of track: Standard.  
 Material:Aluminium, colour:Black, processing:Coating.

Finish	Code
Black	83341



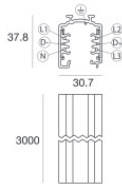
Track  
 Length: 2000mm; Type of track: Standard.  
 Material:Aluminium, colour:Black, processing:Coating.

Finish	Code
Black	83340



Track  
 Length: 1000mm; Type of track: Standard.  
 Material:Aluminium, colour:Black, processing:Coating.

Finish	Code
Black	83339



Track  
 Length: 3000mm; Type of track: Standard.  
 Material:Aluminium, colour:White, processing:Coating.

Finish	Code
White	83338