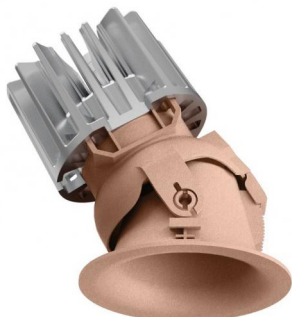


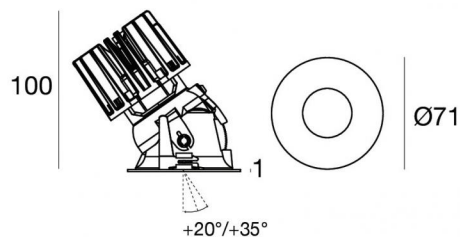
Quantum_RJ EVO



Downlights | 1 arrayLED 9 W DC 700 mA | CRI 90
C00632CUWML



64



Max inclination:
+20° with double panel
+35° with single panel

Technical data

Type	Encasement with flange
Installation position	Ceiling
Installation environment	Indoor
Light Source	LED
Circuit structure	arrayLED
Optics	Medium Flood
Light emission direction	downward
Nominal power	9 W DC
Source lumens	1119 lm
Input voltage range	700mA
CCT / Tone	3000 K
Colour rendering index	90 Ra
C.C. / C.V.	CC
Safety class	3
IP	IP40
Optical compartment IP	IP65
Glow wire test	850°
Direct mounting on normally flammable surfaces	Yes
CE	Yes
Driver included	No
Dimmable article	DALI - 1-10V
Directional	No
Tilting	Yes
total angle (horizontal plane)	360 °
total angle (vertical plane)	35 °
Walk-over	No
Drive-over	No
Cable included	Yes
Cable length	0.2 m
Resin potting	No
Type of light emission	Single emission
Net weight	0.3 Kg
Electrostatic discharge protection	No
Surge protection	No

Finishing casing

Material	Technopolymer
Colour	copper
Processing	Coating

Finishing diffuser

Material	UV Resistant Polycarbonate
Colour	transparent

Finishing radiator

Material	Die-cast Aluminium EN AB - 46100
Colour	Aluminium
Processing	Polishing

Electronics

	99147 On/Off Driver 198-264V AC
	99735 Multi Power 198-264V AC / 180-275V DC
	99733 1-10V Multi Power 198-264V AC / 180-275V DC
	C-E100012 Push and Simply Dim - DALI-2 Controller
	C-E100016 Push and Simply Dim - DALI-2 Controller



Downlights | 1 arrayLED 9 W DC 700 mA | CRI 90 | Base C00632CUWML

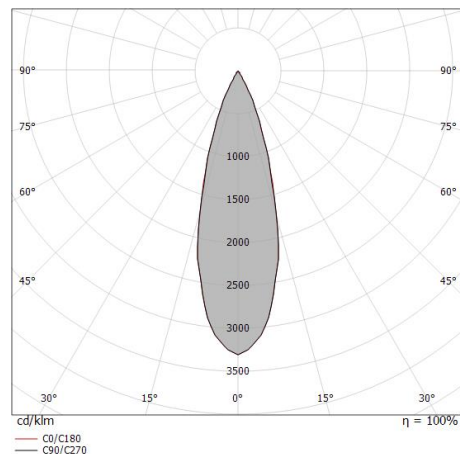
Single emission recessed downlights for indoor application. The warm white LED light source with a medium flood light distribution is composed of 1 arrayed LEDs with CCT of 3000 K and a CRI 90; the source luminous flux is 1119 lm, with a 124.3 lm/W nominal luminous efficacy.

The device body is made of technopolymer and features a copper finish, processed by means of coating; the diffuser is made of uv resistant polycarbonate. The ingress protection degree is IP40; the total weight is of 0.3 kg. The power supply driver is not provided and is to be ordered separately.

The total absorbed power is 9 W. The power supply cable is included and features a 0.2 m length.

The device features protection class III and can be ceiling-mounted, with a 64 mm diameter hole (in plasterboard) with an outer casing, code 89374(for concrete or masonry).

Compliant with the EN 60598-1 standard and its specific provisions.



Distance [m]	Cone diameter [m]	illuminance [lx]
0.5	0.27 0.27	E(0°) 9204 E(C90) 4143 E(C0) 4164
1.0	0.54 0.55	E(0°) 2301 E(C90) 1036 E(C0) 1041
1.5	0.82 0.82	E(0°) 1023 E(C90) 460 E(C0) 463
2.0	1.09 1.08	E(0°) 575 E(C90) 259 E(C0) 260
2.5	1.36 1.37	E(0°) 368 E(C90) 166 E(C0) 167
3.0	1.63 1.64	E(0°) 256 E(C90) 115 E(C0) 116

— C0/C180 (Half-peak divergence: 30.6°)
— C90/C270 (Half-peak divergence: 30.4°)

Energy efficiency class

This product contains a light source of energy efficiency class E.

Illuminotechnical Features

Light Output Ratio (LOR)	62 %
Source lumens	1119 lm
Delivered lumens	695 lm
Consumption	9 W
Luminaire efficacy	77 lm/W
Colour temperature	3000 K
Standard Deviation of Colour Matching	2 Step MacAdam
Colour rendering index	90 Ra
Standard Operating Ambient Temperature	-20 / +50°C
Ordinary temperature on the glass	40°C

LED Life / Failure Ratio

L70 B10 C0 112960h (at Tj 65 Ta 25)

UGR

UGR axial	8.5
UGR transversal	8.5
X=4H Y=8H	S=0.25H
Reflection factor	70/50/20

OPTICAL

C0/C180 optics	30°
Light distribution simmetry	Symmetrical



Outer casing
 installation position: ceiling; type of installation: masonry L=200mm, H=113mm, D=137mm.
 Material:polypropylene, colour:white.

Code
89373



Outer casing
 installation position: ceiling; type of installation: masonry L=370mm, H=120mm, D=200mm.
 Material:polypropylene, colour:white.

Code
89374



Optics
 Light distribution: medium wide flood,Cover material: uv resistant polycarbonate

Code
83372



Optics
 Light distribution: medium flood,Cover material: uv resistant polycarbonate

Code
83371



Optics
 Light distribution: spot,Cover material: uv resistant polycarbonate

Code
83370



Anti-glare
 Anti-glare Type: honeycomb louvre.
 Material:Pom-C, colour:Black.

Code
83367



Diffuser
 Diffuser Type: elliptical filter

Code
83368



Diffuser
 Diffuser Type: aesthetic filter

Code
83369



Quantum_RJ EVO gold front kit

Code
C-K400110



Quantum_RJ EVO copper front kit

Code
C-K400111



Vos_RJ EVO copper front kit

Code
C-K400109



Vos_RJ EVO gold front kit

Code
C-K400108



Warp_RJ EVO gold front kit

Code
C-K400028



Warp_RJ EVO copper front kit

Code
C-K400029



Warp_QJ EVO black front kit

Code
C-K400082



Warp_QJ EVO white front kit

Code
C-K400081



Quantum_RJ EVO black front kit

Code

C-K400088



Quantum_RJ EVO white front kit

Code

C-K400087



Vos_RJ EVO black front kit

Code

C-K400084



Vos_RJ EVO white front kit

Code

C-K400083