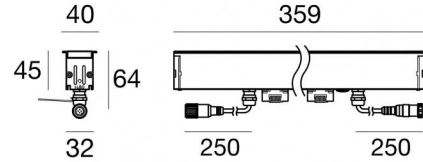




Lines | 85-277 V | 56 topLED 6.4 W DC - 7.2 W AC
CRI 80

C00561AMMWW



Technical data	
Type	Frame
Installation position	Floor
Installation environment	Outdoor
Light Source	LED
Circuit structure	topLED
Optics	Asymmetric Wallwasher
Light emission direction	upward
Nominal power	6.4 W DC
Total Power	7.2 W
Source lumens	1085 lm
Nominal input voltage	220 - 240 V AC
Input voltage range	85 - 277 V AC
Frequency	50 - 60 Hz
CCT / Tone	2700 K
Colour rendering index	80 Ra
C.C. / C.V.	AC
Safety class	2
IP	IP68
Installation limitations	Not for underwater use
IK	IK08
Glow wire test	850°
Direct mounting on normally flammable surfaces	Yes
CE	Yes
Driver included	Driver
Dimmable article	No
Directional	No
Tilting	No
Walk-over	Yes
Drive-over	2000 Kg
Cable included	Yes
Cable length	0.25 m
Resin potting	No
Type of light emission	Single emission
Net weight	0.48 Kg
Electrostatic discharge protection	Yes
Surge protection	0.5 KV

Finishing casing

Material	Aluminium
Colour	Anodised Aluminum
Processing	15 µm Anodizing

Finishing diffuser

Material	Extra clear glass - Tempered
Colour	transparent
Processing	Silk-screening



Lines | 85-277 V | 56 topLED 6.4 W DC - 7.2 W AC | CRI 80 | Base
C00561AMMWW

Single emission lines for outdoor application. The super warm white LED light source with a asymmetric wallwasher light distribution is composed of 56 topLEDs with CCT of 2700 K and a CRI 80; the source luminous flux is 1085 lm, with a 169.5 lm/W nominal luminous efficacy.

The device body is made of aluminium and features a anodised aluminum finish, processed by means of 15 µm anodizing; the diffuser is made of extra clear glass - tempered with a silk-screening treatment. The ingress protection degree is IP68; the total weight is of 0.48 kg.

The total absorbed power is 7.2 W. The power supply cable is included and features a 0.25 m length.

The device features protection class II and can be floor-mounted with an outer casing, code 99912(for concrete or masonry).

Compliant with the EN 60598-1 standard and its specific provisions.

Energy efficiency class

This product contains a light source of energy efficiency class D.

Illuminotechnical Features

Light Output Ratio (LOR)	58 %
Source lumens	1085 lm
Delivered lumens	639 lm
Consumption	7.2 W
Luminaire efficacy	88 lm/W
Colour temperature	2700 K
Standard Deviation of Colour Matching	3 Step MacAdam
Colour rendering index	80 Ra

Standard Operating Ambient Temperature -20 / +50°C

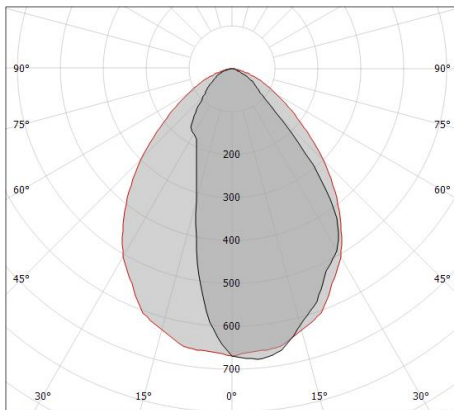
Ordinary temperature on the glass 40°C

LED Life / Failure Ratio

L70 B10 C0 145770h (at Tj 65 Ta 25)

OPTICAL

C0/C180 optics	85°
Light distribution symmetry	Asymmetrical



cd/km
 — C0/C180
 — C90/C270
 η = 100%

0.5	0.92	E(0°) E(C0)	42.6°	1709 342
1.0	1.84	E(0°) E(C0)	42.6°	427 86
1.5	2.76	E(0°) E(C0)	42.6°	190 38
2.0	3.68	E(0°) E(C0)	42.6°	107 21
2.5	4.60	E(0°) E(C0)	42.6°	68 14
3.0	5.52	E(0°) E(C0)	42.6°	47 10

Distance [m] Cone diameter [m] Illuminance [lx]
 — C0/C180 (Half-peak divergence: 85.2°)



	<p>Springs for recessing</p>	<p>Code <u>99818</u></p>	
	<p>Cable and connector - 24V DC 190-250V AC - Conn. F.4 pin M12 (L 1,5m) Length 1500 mm; insulation double; cable gland: no; colors: white - black - blue - brown.</p>	<p>Code <u>99216</u></p>	
	<p>Cable and connector - 24V DC 190-250V AC - Conn. F.4 pin M12 (L 5m) Length 5000 mm; insulation double; cable gland: no; colors: white - black - blue - brown.</p>	<p>Code <u>89190</u></p>	
	<p>Cable and connector - Extension cable Length 1000 mm; insulation double; cable gland: no.</p>	<p>Code <u>98437</u></p>	
	<p>Cable and connector - 24V DC 190-250V AC - Conn M. + F. 4 pin M12 (L 5m) Length 5000 mm; insulation double; cable gland: no.</p>	<p>Code <u>98149</u></p>	
	<p>Cable and connector - 24V DC 190-250V AC - Conn M. + F. 4 pin M12 (L 10m) Length 10000 mm; insulation double; cable gland: no.</p>	<p>Code <u>89188</u></p>	
		<p>Outer casing installation position: floor; type of installation: masonry L=359mm, H=78.7mm, D=71.1mm</p>	<p>Code <u>99912</u></p>
		<p>Closing cap - End caps for Xenia - 2 pieces Material:Aluminium, colour:grey, processing:Coating.</p>	<p>Code <u>83188</u></p>