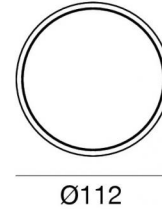
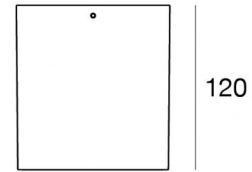
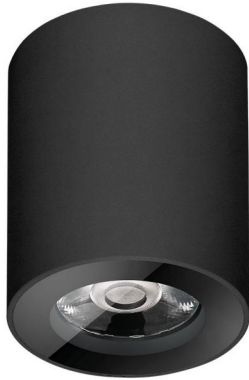




Ceiling Downlights | 198-264 V AC /200-300 V DC  
1 arrayLED 14 W DC - 15.8 W AC | CRI 80



**C00483BBWML**



Technical data	
Type	Surface
Installation position	Ceiling
Installation environment	Outdoor
Light Source	LED
Circuit structure	arrayLED
Optics	Medium Flood
Light emission direction	downward
Nominal power	14 W DC
Total Power	15.8 W
Source lumens	2371 lm
Nominal input voltage	220 - 240 V AC
Input voltage range	198 - 264 V AC
Frequency	50 - 60 Hz
CCT / Tone	3000 K
Colour rendering index	80 Ra
C.C. / C.V.	AC
Safety class	1
IP	IP65
IK	IK08
Glow wire test	850°
Direct mounting on normally flammable surfaces	Yes
CE	Yes
Driver included	Driver
Dimmable article	DALI-2 - PUSH DIM
Directional	No
Tilting	No
Walk-over	No
Drive-over	No
Cable included	No
Resin potting	No
Type of light emission	Single emission
Net weight	1.13 Kg
Electrostatic discharge protection	Yes
Surge protection	1 KV
Optics technology	Set-back low glare optics

Finishing casing	
Material	Die-cast Aluminium EN AB - 46100
Colour	black
Processing	Open pore anodizing + Powder Coating
Finishing diffuser	
Material	Extra clear glass - Tempered
Colour	transparent
Processing	Silk-screening



Ceiling Downlights | 198-264 V AC /200-300 V DC | 1 arrayLED 14 W DC - 15.8 W AC | CRI

80 | Base

**C00483BBWML**

Single emission ceiling downlights for outdoor application. The warm white LED light source with a medium flood light distribution is composed of 1 arrayed LEDs with CCT of 3000 K and a CRI 80; the source luminous flux is 2371 lm, with a 169.4 lm/W nominal luminous efficacy.

The device body is made of die-cast aluminium en ab - 46100 and features a black finish, processed by means of open pore anodizing + powder coating; the diffuser is made of extra clear glass - tempered with a silk-screening treatment. The ingress protection degree is IP65; the total weight is of 1.13 kg.

The total absorbed power is 15.8 W.

The device features protection class I and can be ceiling-mounted.

Compliant with the EN 60598-1 standard and its specific provisions.

### Energy efficiency class

This product contains a light source of energy efficiency class E.

### Illuminotechnical Features

Light Output Ratio (LOR)	73 %
Source lumens	2371 lm
Delivered lumens	1741 lm
Consumption	15.8 W
Luminaire efficacy	110 lm/W
Colour temperature	3000 K
Standard Deviation of Colour Matching	2 Step MacAdam
Colour rendering index	80 Ra
Standard Operating Ambient Temperature	-20 / +50°C
Ordinary temperature on the glass	40°C

### LED Life / Failure Ratio

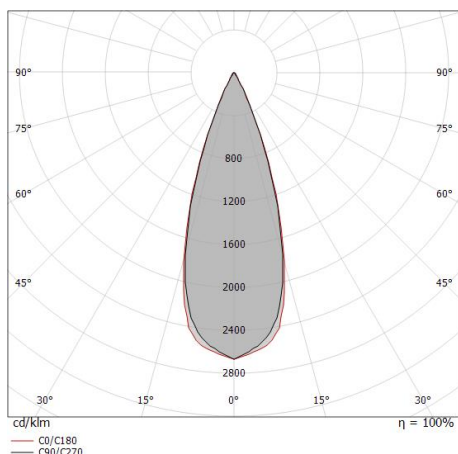
L70 B10 C0 252000h (at Tj 65 Ta 25 )

### UGR

UGR axial	12.7
UGR transversal	12.8
X=4H   Y=8H	S=0.25H
Reflection factor	70/50/20

### OPTICAL

C0/C180 optics	36°
Light distribution simmetry	Symmetrical



Distance [m]	Cone diameter [m]	illuminance [lx]
0.5	0.32 0.32	E(0°) 18602 E(C90) 8073 E(C0) 8081
1.0	0.64 0.65	E(0°) 4651 E(C90) 2018 E(C0) 2020
1.5	0.96 0.97	E(0°) 2067 E(C90) 897 E(C0) 898
2.0	1.28 1.30	E(0°) 1163 E(C90) 505 E(C0) 505
2.5	1.61 1.62	E(0°) 744 E(C90) 323 E(C0) 323
3.0	1.93 1.95	E(0°) 517 E(C90) 224 E(C0) 224

— C0/C180 (Half-peak divergence: 36.0°)  
— C90/C270 (Half-peak divergence: 35.6°)



Bracket - Bracket for installation on stretched cable  
installation position: cable L=133mm, H=60mm, D=25mm.  
Material:Stainless steel --, colour:steel.

**Finish**



**Code**

C-F100018