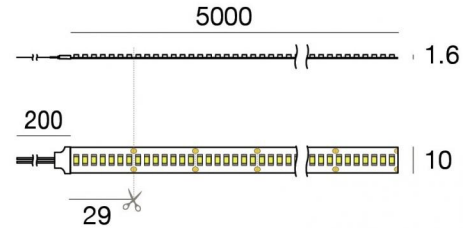


Ribbon HF_V2 238 LEDs/m



LED Strip | 1 topLED 98 W DC 24 V | 19.6 W/m
2216 Lm/m | CRI 90
C0042WDI05000



| Technical data | |
|--|-----------------------|
| Length | 5000 mm |
| Minimum cut | 29 mm |
| Type | LED Strip |
| Installation position | Wall lights - Ceiling |
| Installation environment | Indoor |
| Light Source | LED |
| Circuit structure | topLED |
| Optics | Diffused |
| Light emission direction | external |
| Nominal power | 98 W DC |
| Power / m | 19.6 W / m |
| Source lumens | 11080 lm |
| Source lumens / m | 2216 lm / m |
| Input voltage range | 24V |
| CCT / Tone | 3000 K |
| Colour rendering index | 90 Ra |
| C.C. / C.V. | CV |
| Safety class | 3 |
| IP | IP20 |
| Glow wire test | No |
| Direct mounting on normally flammable surfaces | Yes |
| CE | Yes |
| Driver included | No |
| Dimmable article | DALI - 1-10V |
| Directional | No |
| Tilting | No |
| Walk-over | No |
| Drive-over | No |
| Cable included | Yes |
| Cable length | 0.2 m |
| Resin potting | No |
| Type of light emission | Single emission |
| Length | 5000 mm |
| Net weight | 0.36 Kg |
| Electrostatic discharge protection | No |
| Surge protection | No |

Finishing casing

| | |
|----------|---------------|
| Material | Technopolymer |
| Colour | white |

Electronics

| | |
|--|---|
| | 99331 On/Off Driver 198~264V AC / 176~275V DC 150 W (1 art.) |
| | 99332 1-10V Controller (1 art.) |
| | 99374 On/Off Driver 198~264V AC / 176~275V DC 75 W (1 art.) |
| | 83333 Push and Simply Dim - DALI-2 Controller (1 art.) |
| | C-E400002 Push and Simply Dim - DALI-2 Controller (1 - 2 art.) |

Ribbon HF_V2 238 LEDs/m



LED Strip | 1 topLED 98 W DC 24 V | 19.6 W/m | 2216 Lm/m | CRI 90
C0042WDI05000

Single emission led strip for indoor application. The warm white LED light source with a diffused light distribution is composed of 1190 striped LEDs with CCT of 3000 K and a CRI 90; the source luminous flux is 11080 lm, with a 113.1 lm/W nominal luminous efficacy.

The device body is made of technopolymer and features a white finish. The ingress protection degree is IP20; the total weight is of 0.36 kg. The power supply driver is not provided and is to be ordered separately.

The total absorbed power is 98 W. The power supply cable is included and features a 0.2 m length.

The device features protection class III and can be wall lights or ceiling-mounted.

Compliant with the EN 60598-1 standard and its specific provisions.

Energy efficiency class

This product contains a light source of energy efficiency class F.



Illuminotechnical Features

| | |
|--|----------------|
| Source lumens | 11080 lm |
| Colour temperature | 3000 K |
| Standard Deviation of Colour Matching | 3 Step MacAdam |
| Colour rendering index | 90 Ra |
| Standard Operating Ambient Temperature | -20 / +45°C |

LED Life / Failure Ratio


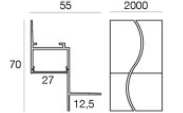

L70 B50 C0 50000h

Ribbon HF_V2 238 LEDs/m



LED Strip | 1 topLED 98 W DC 24 V | 19.6 W/m | 2216 Lm/m | CRI 90
C0042WDI05000

Components

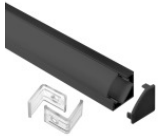
| | | | |
|--|---|----------------------------------|---|
|  |  | LUNO_20/27 - Profili Modular | Code <u>C-K100017</u> |
|  |  | LUNO_20/27 - Profili Modular | Code <u>C-K100018</u> |
|  |  | Rive_17/16 - Profili Modular | Code <u>C-K100015</u> |
|  |  | Rive_17/16 - Profili Modular | Code <u>C-K100016</u> |
|  |  | Cela_18/18 - Profili Modular | Code <u>C-K100019</u> |
|  |  | Cela_18/18 - Profili Modular | Code <u>C-K100020</u> |
|  |  | Tabulo_35/14 - Profili Modular | Code <u>C-K100025</u> |
|  |  | Rive_17/16 | Code <u>C-K100026 - C-K100027</u> |

Ribbon HF_V2 238 LEDs/m



LED Strip | 1 topLED 98 W DC 24 V | 19.6 W/m | 2216 Lm/m | CRI 90
C0042WDI05000

Components



Cela_18/18

Code

C-K100028 - C-K100029

Ribbon HF_V2 238 LEDs/m



Ribbon HF_V2 238 LEDs/m | LED Strip | Accessories
C0042WDI05000

| | | | |
|--|--|---|--------------------------------------|
| | | <p>Connector Length 15,4 mm.</p> | <p>Code <u>83399</u></p> |
|--|--|---|--------------------------------------|

| | | | |
|--|--|-----------------|--------------------------------------|
| | | <p>Diffuser</p> | <p>Code <u>98941</u></p> |
|--|--|-----------------|--------------------------------------|

| | | | |
|--|--|-----------------|--------------------------------------|
| | | <p>Diffuser</p> | <p>Code <u>98942</u></p> |
|--|--|-----------------|--------------------------------------|

| | | | |
|--|--|------------------------------------|--------------------------------------|
| | | <p>Diffuser - Opaline Diffuser</p> | <p>Code <u>98943</u></p> |
|--|--|------------------------------------|--------------------------------------|

| | | <p>Diffuser Material:PC, colour:black.</p> | <table border="1"> <tr> <th>Finish</th> <th>Code</th> </tr> <tr> <td>Black</td> <td><u>83132</u></td> </tr> </table> | Finish | Code | Black | <u>83132</u> |
|--------|--------------|---|--|--------|------|-------|--------------|
| Finish | Code | | | | | | |
| Black | <u>83132</u> | | | | | | |

| | | | |
|--|--|--|--|
| | | <p>Optics Light distribution: medium flood,Cover material: pc</p> | <p>Code <u>C-U100001</u></p> |
|--|--|--|--|

| | | <p>Diffuser Material:PC, colour:opaline.</p> | <table border="1"> <tr> <th>Finish</th> <th>Code</th> </tr> <tr> <td>Opaline</td> <td><u>C-K200005</u></td> </tr> </table> | Finish | Code | Opaline | <u>C-K200005</u> |
|---------|------------------|---|--|--------|------|---------|------------------|
| Finish | Code | | | | | | |
| Opaline | <u>C-K200005</u> | | | | | | |

| | | <p>Diffuser Material:PC, colour:opaline.</p> | <table border="1"> <tr> <th>Finish</th> <th>Code</th> </tr> <tr> <td>Opaline</td> <td><u>C-K200007</u></td> </tr> </table> | Finish | Code | Opaline | <u>C-K200007</u> |
|---------|------------------|---|--|--------|------|---------|------------------|
| Finish | Code | | | | | | |
| Opaline | <u>C-K200007</u> | | | | | | |

| | | <p>Diffuser Material:PC, colour:opaline.</p> | <table border="1"> <tr> <th>Finish</th> <th>Code</th> </tr> <tr> <td>Opaline</td> <td><u>C-K200007</u></td> </tr> </table> | Finish | Code | Opaline | <u>C-K200007</u> |
|---------|------------------|---|--|--------|------|---------|------------------|
| Finish | Code | | | | | | |
| Opaline | <u>C-K200007</u> | | | | | | |

Ribbon HF_V2 238 LEDs/m



Ribbon HF_V2 238 LEDs/m | LED Strip | Accessories
C0042WDI05000

| | | | |
|--|--|---|--|
| | | <p>Closing cap - Closing cap Material:PC, colour:white.</p> | <p>Code <u>98892</u></p> |
| | | <p>Closing cap Material:PC, colour:black.</p> | <p>Code <u>83133</u></p> |
| | | <p>Closing cap Material:plastic, colour:grey.</p> | <p>Code <u>C-V400023</u></p> |
| | | <p>Closing cap Material:plastic, colour:grey.</p> | <p>Code <u>C-V400027</u></p> |
| | | <p>Closing cap Material:plastic, colour:grey.</p> | <p>Code <u>C-V400029</u></p> |
| | | <p>Bracket - Mounting bracket L=19mm, H=8mm, D=9mm. Material:Iron, colour:zinc, processing:Washing.</p> | <p>Code <u>98944</u></p> |
| | | <p>Diffuser</p> | <p>Code <u>98925</u></p> |
| | | <p>Closing cap</p> | <p>Code <u>98928</u></p> |

Ribbon HF_V2 238 LEDs/m



Ribbon HF_V2 238 LEDs/m | LED Strip | Accessories
C0042WDI05000

| | | | |
|--|--|---|---|
| | | <p>Diffuser Material:PC, colour:opaline.</p> | <p>Finish Opaline</p> <p>Code C-K200001</p> |
| | | <p>Diffuser Material:PC, colour:black.</p> | <p>Finish Black</p> <p>Code C-K200002</p> |
| | | <p>Bracket L=9mm, H=8.8mm, D=21.8mm. Material:Iron, colour:translucent, processing:Washing.</p> | <p>Code 98931</p> |
| | | <p>Diffuser Material:PC, colour:opaline.</p> | <p>Finish Opaline</p> <p>Code C-K200003</p> |
| | | <p>Diffuser Material:PC, colour:black.</p> | <p>Finish Black</p> <p>Code C-K200004</p> |
| | | <p>Closing cap Material:plastic, colour:grey.</p> | <p>Code C-V400035</p> |
| | | <p>Closing cap Material:ABS Plastic, colour:black.</p> | <p>Code C-V400036</p> |
| | | <p>Closing cap Material:plastic, colour:grey.</p> | <p>Code C-V400025</p> |

Ribbon HF_V2 238 LEDs/m



Ribbon HF_V2 238 LEDs/m | LED Strip | Accessories
C0042WDI05000

| | | | |
|--|--|--|--|
| | | <p>Closing cap Material:plastic, colour:grey.</p> | <p>Code <u>C-V400031</u></p> |
| | | <p>Closing cap Material:plastic, colour:grey.</p> | <p>Code <u>C-V400033</u></p> |
| | | <p>Bag / Fixing kit</p> | <p>Code <u>C-K100027</u></p> |
| | | <p>Closing cap</p> | <p>Code <u>98896</u></p> |
| | | <p>Diffuser</p> | <p>Code <u>98898</u></p> |
| | | <p>Diffuser</p> | <p>Code <u>98899</u></p> |
| | | <p>Diffuser</p> | <p>Code <u>98900</u></p> |
| | | <p>Closing cap</p> | <p>Code <u>98902</u></p> |

Ribbon HF_V2 238 LEDs/m



Ribbon HF_V2 238 LEDs/m | LED Strip | Accessories
C0042WDI05000

| | | <p>Bracket L=12mm, H=15mm, D=30mm. Material:PC, colour:white.</p> | <table border="1"> <thead> <tr> <th>Finish</th> <th>Code</th> </tr> </thead> <tbody> <tr> <td>White</td> <td>98901</td> </tr> </tbody> </table> | Finish | Code | White | 98901 |
|--------|--|--|---|--------|-------|-----------|-------|
| Finish | Code | | | | | | |
| White | 98901 | | | | | | |
| | | <p>Closing cap Material:Aluminium, colour:translucent.</p> | <p>Code <u>98907</u></p> | | | | |
| | | <p>Diffuser</p> | <p>Code <u>98917</u></p> | | | | |
| | | <p>Closing cap Material:PC, colour:white.</p> | <p>Code <u>98918</u></p> | | | | |
| | | <p>Profile - Wall integrated side profile Material:Aluminium 6060, colour:Anodised Aluminum, processing:20 µm anodizing.</p> | <p>Code <u>98921</u></p> | | | | |
| | | <p>Closing cap Material:PC, colour:white.</p> | <p>Code <u>98922</u></p> | | | | |
| | <p>Diffuser Material:PC, colour:black.</p> | <table border="1"> <thead> <tr> <th>Finish</th> <th>Code</th> </tr> </thead> <tbody> <tr> <td>Black</td> <td>C-K200009</td> </tr> </tbody> </table> | Finish | Code | Black | C-K200009 | |
| Finish | Code | | | | | | |
| Black | C-K200009 | | | | | | |
| | | <p>Closing cap Material:plastic, colour:grey.</p> | <p>Code <u>C-V400041</u></p> | | | | |

Ribbon HF_V2 238 LEDs/m



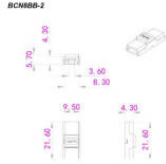
Ribbon HF_V2 238 LEDs/m | LED Strip | Accessories
C0042WDI05000

| | | | |
|------------------|--|---|---|
| | | <p>Diffuser Diffuser Type: opaline diffuser. Material:PC, colour:opaline.</p> | <p>Finish Opaline</p> <p>Code 98395</p> |
| | | <p>Closing cap</p> | <p>Code 98418</p> |
| <p>5x</p> | | <p>Springs for recessing - 5 pieces</p> | <p>Code 98420</p> |
| | | <p>Closing cap Material:plastic, colour:grey.</p> | <p>Code C-V400037</p> |
| | | <p>Closing cap Material:ABS Plastic, colour:black.</p> | <p>Code C-V400038</p> |
| | | <p>Bracket L=22mm, H=21.5mm, D=16.4mm. Material:PC, colour:transparent.</p> | <p>Finish Transp.</p> <p>Code 98904</p> |
| | | <p>Bag / Fixing kit</p> | <p>Code C-K100028</p> |
| | | <p>Bag / Fixing kit</p> | <p>Code C-K100029</p> |

Ribbon HF_V2 238 LEDs/m



Ribbon HF_V2 238 LEDs/m | LED Strip | Accessories
C0042WDI05000



Connector - Fast connector for Ribbon Basic V2 8mm, Ribbon HD 8mm (not Ribbon COB)
Length 21,6 mm.

Code
83396



Connector - Fast connector for Ribbon Basic V2 8mm, Ribbon HD 8mm (not Ribbon COB)
Length 15,4 mm.

Code
83397



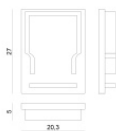
Connector - Quick strip-strip connector for Ribbon HF V2
Length 15 mm.

Code
C-W400001



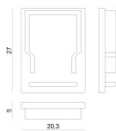
Connector - Quick cable-strip connector for Ribbon HF V2
Length 15 mm.

Code
C-W400002



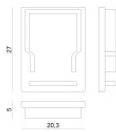
Closing cap
Material:plastic, colour:grey.

Code
C-V400019



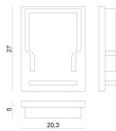
Closing cap
Material:ABS Plastic, colour:black.

Code
C-V400020



Closing cap
Material:plastic, colour:grey.

Code
C-V400021



Closing cap
Material:ABS Plastic, colour:black.

Code
C-V400022

Ribbon HF_V2 238 LEDs/m



Ribbon HF_V2 238 LEDs/m | LED Strip | Accessories

C0042WDI05000
