

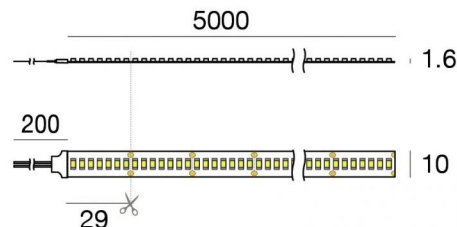
Ribbon HF_V2 238 LEDs/m



LED Strip | 1 topLED 98 W DC 24 V | 19.6 W/m

2125.6 Lm/m | CRI 90

C0042MDI05000



Technical data	
Length	5000 mm
Minimum cut	29 mm
Installation position	Wall lights - Ceiling
Installation environment	Indoor
Light Source	LED
Circuit structure	topLED
Optics	Diffused
Light emission direction	external
Nominal power	98 W DC
Source lumens	10628 lm
Input voltage range	24V
CCT / Tone	2700 K
Colour rendering index	90 Ra
C.C. / C.V.	CV
Safety class	3
IP	IP20
Glow wire test	No
Direct mounting on normally flammable surfaces	Yes
CE	Yes
Driver included	No
Dimmable article	DALI - 1-10V
Directional	No
Tilting	No
Walk-over	No
Drive-over	No
Cable included	Yes
Cable length	0.2 m
Resin potting	No
Type of light emission	Single emission
Length	5000 mm
Net weight	0.36 Kg
Electrostatic discharge protection	No
Surge protection	No

Finishing casing

Material	Technopolymer
Colour	white

Electronics

	99331 On/Off Driver 198~264V AC / 176~275V DC 150 W (1 art.)
	99332 1-10V Controller (1 art.)
	99374 On/Off Driver 198~264V AC / 176~275V DC 75 W (1 art.)
	83333 Push and Simply Dim - DALI-2 Controller (1 art.)
	C-E400002 Push and Simply Dim - DALI-2 Controller (1 - 2 art.)

Ribbon HF_V2 238 LEDs/m



LED Strip | 1 topLED 98 W DC 24 V | 19.6 W/m | 2125.6 Lm/m | CRI 90
C0042MDI05000

Single emission led strip for indoor application. The super warm white LED light source with a diffused light distribution is composed of 1190 stripled LEDs with CCT of 2700 K and a CRI 90; the source luminous flux is 10628 lm, with a 108.4 lm/W nominal luminous efficacy.

The device body is made of technopolymer and features a white finish. The ingress protection degree is IP20; the total weight is of 0.36 kg. The power supply driver is not provided and is to be ordered separately.

The total absorbed power is 98 W. The power supply cable is included and features a 0.2 m length.

The device features protection class III and can be wall lights or ceiling-mounted.

Compliant with the EN 60598-1 standard and its specific provisions.

Energy efficiency class

This product contains a light source of energy efficiency class E.



Illuminotechnical Features

Source lumens	10628 lm
Colour temperature	2700 K
Standard Deviation of Colour Matching	3 Step MacAdam
Colour rendering index	90 Ra
Standard Operating Ambient Temperature	-20 / +45°C

LED Life / Failure Ratio


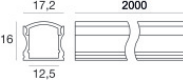
L70 B50 C0 50000h

Ribbon HF_V2 238 LEDs/m



LED Strip | 1 topLED 98 W DC 24 V | 19.6 W/m | 2125.6 Lm/m | CRI 90
C0042MDI05000

Components

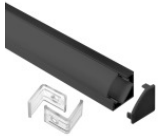
		LUNO_20/27 - Profili Modular	Code <u>C-K100017</u>
		LUNO_20/27 - Profili Modular	Code <u>C-K100018</u>
		Rive_17/16 - Profili Modular	Code <u>C-K100015</u>
		Rive_17/16 - Profili Modular	Code <u>C-K100016</u>
		Cela_18/18 - Profili Modular	Code <u>C-K100019</u>
		Cela_18/18 - Profili Modular	Code <u>C-K100020</u>
		Tabulo_35/14 - Profili Modular	Code <u>C-K100025</u>
		Rive_17/16	Code <u>C-K100026 - C-K100027</u>

Ribbon HF_V2 238 LEDs/m



LED Strip | 1 topLED 98 W DC 24 V | 19.6 W/m | 2125.6 Lm/m | CRI 90
C0042MDI05000

Components



Cela_18/18

Code

C-K100028 - C-K100029

Ribbon HF_V2 238 LEDs/m



Ribbon HF_V2 238 LEDs/m | LED Strip | Accessories
C0042MDI05000

	<p>Connector Length 15,4 mm.</p>		<p>Code <u>83399</u></p>
--	---	--	--------------------------------------

	<p>Diffuser</p>		<p>Code <u>98941</u></p>
--	-----------------	--	--------------------------------------

	<p>Diffuser</p>		<p>Code <u>98942</u></p>
--	-----------------	--	--------------------------------------

	<p>Diffuser - Opaline Diffuser</p>		<p>Code <u>98943</u></p>
--	------------------------------------	--	--------------------------------------

	<p>Diffuser Material:PC, colour:black.</p>		<table border="1"> <tr> <th>Finish</th> <th>Code</th> </tr> <tr> <td>Black</td> <td><u>83132</u></td> </tr> </table>	Finish	Code	Black	<u>83132</u>
Finish	Code						
Black	<u>83132</u>						

	<p>Optics Light distribution: medium flood,Cover material: pc</p>		<p>Code <u>C-U100001</u></p>
--	--	--	--

	<p>Diffuser Material:PC, colour:opaline.</p>		<table border="1"> <tr> <th>Finish</th> <th>Code</th> </tr> <tr> <td>Opaline</td> <td><u>C-K200005</u></td> </tr> </table>	Finish	Code	Opaline	<u>C-K200005</u>
Finish	Code						
Opaline	<u>C-K200005</u>						

	<p>Diffuser Material:PC, colour:opaline.</p>		<table border="1"> <tr> <th>Finish</th> <th>Code</th> </tr> <tr> <td>Opaline</td> <td><u>C-K200007</u></td> </tr> </table>	Finish	Code	Opaline	<u>C-K200007</u>
Finish	Code						
Opaline	<u>C-K200007</u>						

Ribbon HF_V2 238 LEDs/m



Ribbon HF_V2 238 LEDs/m | LED Strip | Accessories
C0042MDI05000

		<p>Closing cap - Closing cap Material:PC, colour:white.</p>	<p>Code <u>98892</u></p>
		<p>Closing cap Material:PC, colour:black.</p>	<p>Code <u>83133</u></p>
		<p>Closing cap Material:plastic, colour:grey.</p>	<p>Code <u>C-V400023</u></p>
		<p>Closing cap Material:plastic, colour:grey.</p>	<p>Code <u>C-V400027</u></p>
		<p>Closing cap Material:plastic, colour:grey.</p>	<p>Code <u>C-V400029</u></p>
		<p>Bracket - Mounting bracket L=19mm, H=8mm, D=9mm. Material:Iron, colour:zinc, processing:Washing.</p>	<p>Code <u>98944</u></p>
		<p>Diffuser</p>	<p>Code <u>98925</u></p>
		<p>Closing cap</p>	<p>Code <u>98928</u></p>

Ribbon HF_V2 238 LEDs/m



Ribbon HF_V2 238 LEDs/m | LED Strip | Accessories
C0042MDI05000

		<p>Diffuser Material:PC, colour:opaline.</p>	<p>Finish Opaline</p> <p>Code C-K200001</p>
		<p>Diffuser Material:PC, colour:black.</p>	<p>Finish Black</p> <p>Code C-K200002</p>
		<p>Bracket L=9mm, H=8.8mm, D=21.8mm. Material:Iron, colour:translucent, processing:Washing.</p>	<p>Code 98931</p>
		<p>Diffuser Material:PC, colour:opaline.</p>	<p>Finish Opaline</p> <p>Code C-K200003</p>
		<p>Diffuser Material:PC, colour:black.</p>	<p>Finish Black</p> <p>Code C-K200004</p>
		<p>Closing cap Material:plastic, colour:grey.</p>	<p>Code C-V400035</p>
		<p>Closing cap Material:ABS Plastic, colour:black.</p>	<p>Code C-V400036</p>
		<p>Closing cap Material:plastic, colour:grey.</p>	<p>Code C-V400025</p>

Ribbon HF_V2 238 LEDs/m



Ribbon HF_V2 238 LEDs/m | LED Strip | Accessories
C0042MDI05000

		<p>Closing cap Material:plastic, colour:grey.</p>	<p>Code <u>C-V400031</u></p>
		<p>Closing cap Material:plastic, colour:grey.</p>	<p>Code <u>C-V400033</u></p>
		<p>Bag / Fixing kit</p>	<p>Code <u>C-K100027</u></p>
		<p>Closing cap</p>	<p>Code <u>98896</u></p>
		<p>Diffuser</p>	<p>Code <u>98898</u></p>
		<p>Diffuser</p>	<p>Code <u>98899</u></p>
		<p>Diffuser</p>	<p>Code <u>98900</u></p>
		<p>Closing cap</p>	<p>Code <u>98902</u></p>

Ribbon HF_V2 238 LEDs/m



Ribbon HF_V2 238 LEDs/m | LED Strip | Accessories
C0042MDI05000

		<p>Bracket L=12mm, H=15mm, D=30mm. Material:PC, colour:white.</p>	<table border="1"> <thead> <tr> <th>Finish</th> <th>Code</th> </tr> </thead> <tbody> <tr> <td>White</td> <td>98901</td> </tr> </tbody> </table>	Finish	Code	White	98901
Finish	Code						
White	98901						
		<p>Closing cap Material:Aluminium, colour:translucent.</p>	<p>Code <u>98907</u></p>				
		<p>Diffuser</p>	<p>Code <u>98917</u></p>				
		<p>Closing cap Material:PC, colour:white.</p>	<p>Code <u>98918</u></p>				
		<p>Profile - Wall integrated side profile Material:Aluminium 6060, colour:Anodised Aluminum, processing:20 µm anodizing.</p>	<p>Code <u>98921</u></p>				
		<p>Closing cap Material:PC, colour:white.</p>	<p>Code <u>98922</u></p>				
	<p>Diffuser Material:PC, colour:black.</p>	<table border="1"> <thead> <tr> <th>Finish</th> <th>Code</th> </tr> </thead> <tbody> <tr> <td>Black</td> <td>C-K200009</td> </tr> </tbody> </table>	Finish	Code	Black	C-K200009	
Finish	Code						
Black	C-K200009						
		<p>Closing cap Material:plastic, colour:grey.</p>	<p>Code <u>C-V400041</u></p>				

Ribbon HF_V2 238 LEDs/m



Ribbon HF_V2 238 LEDs/m | LED Strip | Accessories
C0042MDI05000

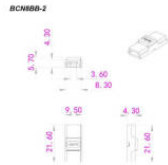
		<p>Diffuser Diffuser Type: opaline diffuser. Material:PC, colour:opaline.</p>	<p>Finish Opaline</p> <p>Code 98395</p>
		<p>Closing cap</p>	<p>Code 98418</p>
<p>5x</p>		<p>Springs for recessing - 5 pieces</p>	<p>Code 98420</p>
		<p>Closing cap Material:plastic, colour:grey.</p>	<p>Code C-V400037</p>
		<p>Closing cap Material:ABS Plastic, colour:black.</p>	<p>Code C-V400038</p>
		<p>Bracket L=22mm, H=21.5mm, D=16.4mm. Material:PC, colour:transparent.</p>	<p>Finish Transp.</p> <p>Code 98904</p>
		<p>Bag / Fixing kit</p>	<p>Code C-K100028</p>
		<p>Bag / Fixing kit</p>	<p>Code C-K100029</p>

Ribbon HF_V2 238 LEDs/m



Ribbon HF_V2 238 LEDs/m | LED Strip | Accessories

C0042MDI05000



Connector - Fast connector for Ribbon Basic V2 8mm, Ribbon HD 8mm (not Ribbon COB)
Length 21,6 mm.

Code
83396



Connector - Fast connector for Ribbon Basic V2 8mm, Ribbon HD 8mm (not Ribbon COB)
Length 15,4 mm.

Code
83397



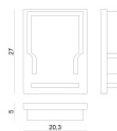
Connector - Quick strip-strip connector for Ribbon HF V2
Length 15 mm.

Code
C-W400001



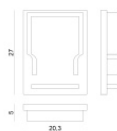
Connector - Quick cable-strip connector for Ribbon HF V2
Length 15 mm.

Code
C-W400002



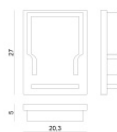
Closing cap
Material:plastic, colour:grey.

Code
C-V400019



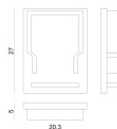
Closing cap
Material:ABS Plastic, colour:black.

Code
C-V400020



Closing cap
Material:plastic, colour:grey.

Code
C-V400021



Closing cap
Material:ABS Plastic, colour:black.

Code
C-V400022

Ribbon HF_V2 238 LEDs/m



Ribbon HF_V2 238 LEDs/m | LED Strip | Accessories

C0042MDI05000
