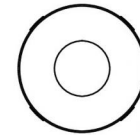
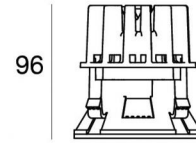
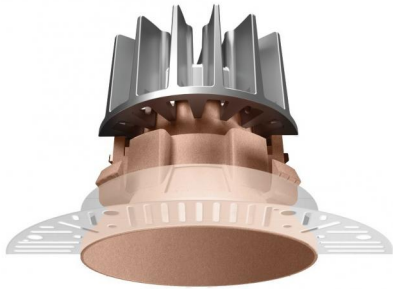


Epitax EVO



Downlights | 1 arrayLED 14 W DC 400 mA | CRI 90
C00371CUNWF



Ø92

Technical data

| | |
|--|---------------------------|
| Type | Encasement without flange |
| Installation position | Ceiling |
| Installation environment | Indoor |
| Light Source | LED |
| Circuit structure | arrayLED |
| Optics | Wide Flood |
| Light emission direction | downward |
| Nominal power | 14 W DC |
| Source lumens | 2411 lm |
| Input voltage range | 400mA |
| CCT / Tone | 4000 K |
| Colour rendering index | 90 Ra |
| C.C. / C.V. | CC |
| Safety class | 3 |
| IP | IP40 |
| Optical compartment IP | IP65 |
| Glow wire test | 850° |
| Direct mounting on normally flammable surfaces | Yes |
| CE | Yes |
| Driver included | No |
| Dimmable article | DALI - 1-10V |
| Directional | No |
| Tilting | No |
| Walk-over | No |
| Drive-over | No |
| Cable included | Yes |
| Cable length | 0.2 m |
| Resin potting | No |
| Type of light emission | Single emission |
| Net weight | 0.3 Kg |
| Electrostatic discharge protection | No |
| Surge protection | No |

Finishing casing

| | |
|------------|---------------|
| Material | Technopolymer |
| Colour | copper |
| Processing | Coating |


Finishing diffuser

| | |
|----------|----------------------------|
| Material | UV Resistant Polycarbonate |
| Colour | transparent |

Finishing radiator

| | |
|------------|----------------------------------|
| Material | Die-cast Aluminium EN AB - 46100 |
| Colour | Aluminium |
| Processing | Polishing |

Electronics

 99734
Multi Power 198~264V AC / 180~275V DC

 99732
1-10V Multi Power 198~264V AC / 180~275V DC

 83322
Push and Simply Dim - DALI-2 Controller

Downlights | 1 arrayLED 14 W DC 400 mA | CRI 90 | Base C00371CUNWF

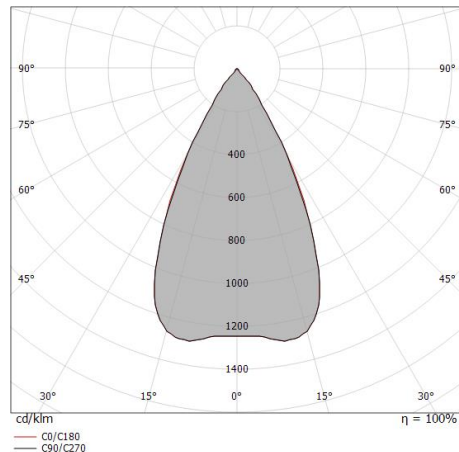
Single emission recessed downlights for indoor application. The natural white LED light source with a wide flood light distribution is composed of 1 arrayed LEDs with CCT of 4000 K and a CRI 90; the source luminous flux is 2411 lm, with a 172.2 lm/W nominal luminous efficacy.

The device body is made of technopolymer and features a copper finish, processed by means of coating; the diffuser is made of uv resistant polycarbonate. The ingress protection degree is IP40; the total weight is of 0.3 kg. The power supply driver is not provided and is to be ordered separately.

The total absorbed power is 14 W. The power supply cable is included and features a 0.2 m length.

The device features protection class III and can be ceiling-mounted with an outer casing, code C-C100007(for concrete or masonry).

Compliant with the EN 60598-1 standard and its specific provisions.



| Distance [m] | Cone diameter [m] | illuminance [lx] |
|--------------|-------------------|---|
| 0.5 | 0.51 0.52 | E(0°) 8193 E(C90) 3004 E(C0) 2973 |
| 1.0 | 1.03 1.05 | E(0°) 2048 E(C90) 751 E(C0) 743 |
| 1.5 | 1.54 1.57 | E(0°) 910 E(C90) 324 E(C0) 330 |
| 2.0 | 2.06 2.09 | E(0°) 512 E(C90) 188 E(C0) 186 |
| 2.5 | 2.57 2.61 | E(0°) 328 E(C90) 120 E(C0) 119 |
| 3.0 | 3.08 3.14 | E(0°) 228 E(C90) 83 E(C0) 83 |

— C0/C180 (Half-peak divergence: 55.2°)
— C90/C270 (Half-peak divergence: 54.4°)

Energy efficiency class

This product contains a light source of energy efficiency class E.

Illuminotechnical Features

| | |
|--|----------------|
| Light Output Ratio (LOR) | 68 % |
| Source lumens | 2411 lm |
| Delivered lumens | 1646 lm |
| Consumption | 14 W |
| Luminaire efficacy | 117 lm/W |
| Colour temperature | 4000 K |
| Standard Deviation of Colour Matching | 2 Step MacAdam |
| Colour rendering index | 90 Ra |
| Colour Rendering Index | 60 R9 |
| Black Body Locus | On |
| Standard Operating Ambient Temperature | -20 / +50°C |

LED Life / Failure Ratio

L70 B10 C0 252000h (at Tj 65 Ta 25)

UGR

| | |
|-------------------|----------|
| UGR axial | 15.9 |
| UGR transversal | 15.9 |
| X=4H Y=8H | S=0.25H |
| Reflection factor | 70/50/20 |

OPTICAL

| | |
|-----------------------------|-------------|
| C0/C180 optics | 54° |
| Light distribution simmetry | Symmetrical |





| | | |
|--|--|--|
| | <p>Anti-glare Anti-glare Type: honeycomb louvre. Material:Pom-C, colour:Black.</p> | <p>Code <u>83379</u></p> |
| | <p>Diffuser Diffuser Type: elliptical filter</p> | <p>Code <u>83380</u></p> |
| | <p>Diffuser Diffuser Type: aesthetic filter</p> | <p>Code <u>83381</u></p> |
| | <p>Optics - Steel AISI 304L Light distribution: flood,Cover material: uv resistant polycarbonate</p> | <p>Code <u>83382</u></p> |
| | <p>Optics Light distribution: medium flood,Cover material: uv resistant polycarbonate</p> | <p>Code <u>83383</u></p> |
| | <p>Optics Light distribution: wide flood,Cover material: uv resistant polycarbonate</p> | <p>Code <u>83384</u></p> |
| | <p>Outer casing installation position: ceiling; type of installation: drywall L=147mm, H=22mm, D=147mm. Material:PC, colour:white.</p> | <p>Finish White Code <u>C-C100007</u></p> |
| | <p>Epitax_R EVO white front kit</p> | <p>Code <u>C-K400124</u></p> |



Epitax_R EVO black front kit

Code

C-K400125



Epitax_R EVO gold front kit

Code

C-K400126



Epitax_R EVO copper front kit

Code

C-K400127