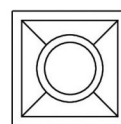
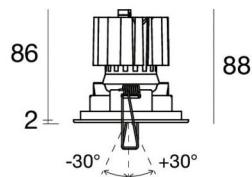
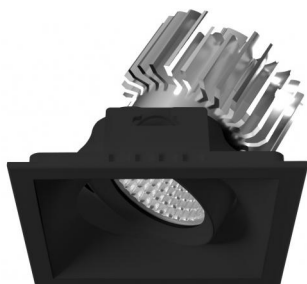




Downlights | 1 arrayLED 11 W DC 300 mA | CRI 90  
**C00184BBWSP**



□ 90

### Technical data

Type	Encasement with flange
Installation position	Ceiling
Installation environment	Indoor
Light Source	LED
Circuit structure	arrayLED
Optics	Spot
Light emission direction	downward
Nominal power	11 W DC
Source lumens	1578 lm
Input voltage range	300mA
CCT / Tone	3000 K
Colour rendering index	90 Ra
C.C. / C.V.	CC
Safety class	3
IP	IP44
Optical compartment IP	IP65
IK	IK05
Glow wire test	850°
Direct mounting on normally flammable surfaces	Yes
CE	Yes
Driver included	No
Dimmable article	DALI - 1-10V
Directional	No
Tilting	Yes
total angle (vertical plane)	60 °
Walk-over	No
Drive-over	No
Cable included	Yes
Cable length	0.15 m
Resin potting	No
Type of light emission	Single emission
Net weight	0.3 Kg
Electrostatic discharge protection	No
Surge protection	No

### Finishing casing

Material	UV Resistant Polycarbonate
Colour	Black
Processing	Liquid painting


### Finishing diffuser


Material	UV Resistant Polycarbonate
Colour	transparent

### Finishing radiator

Material	Die-cast Aluminium EN AB - 46100
Processing	Tumbling

### Electronics

 99734  
 Multi Power 198~264V AC / 180~275V DC (1 art.)

 99732  
 1-10V Multi Power 198~264V AC / 180~275V DC (1 art.)

 83322  
 Push and Simply Dim - DALI-2 Controller (1 art.)



## Downlights | 1 arrayLED 11 W DC 300 mA | CRI 90 | Base C00184BBWSP

Single emission recessed downlights for indoor application. The warm white LED light source with a spot light distribution is composed of 1 arrayed LEDs with CCT of 3000 K and a CRI 90; the source luminous flux is 1578 lm, with a 143.5 lm/W nominal luminous efficacy.

The device body is made of uv resistant polycarbonate and features a black finish, processed by means of liquid painting; the diffuser is made of uv resistant polycarbonate. The ingress protection degree is IP44; the total weight is of 0.3 kg. The power supply driver is not provided and is to be ordered separately.

The total absorbed power is 11 W. The power supply cable is included and features a 0.15 m length.

The device features protection class III and can be ceiling-mounted, with a 81 x 81 mm hole (in plasterboard).

Compliant with the EN 60598-1 standard and its specific provisions.

### Energy efficiency class

This product contains a light source of energy efficiency class E.

### Illuminotechnical Features

Light Output Ratio (LOR)	58 %
Source lumens	1578 lm
Delivered lumens	924 lm
Consumption	11 W
Luminaire efficacy	84 lm/W
Colour temperature	3000 K
Standard Deviation of Colour Matching	2 Step MacAdam
Colour rendering index	90 Ra
Colour Rendering Index	60 R9
Black Body Locus	On
Standard Operating Ambient Temperature	-20 / +50°C
Ordinary temperature on the glass	40°C

### LED Life / Failure Ratio

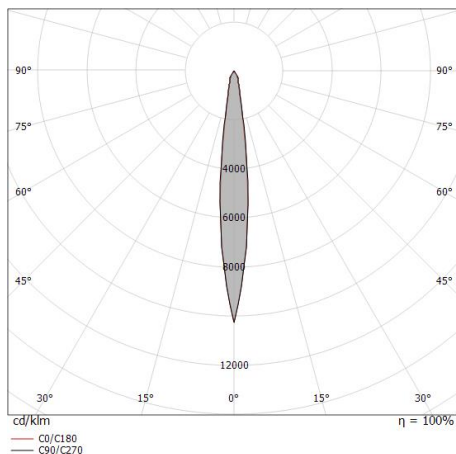
L70 B10 C0 252000h (at Tj 65 Ta 25)

### UGR

UGR axial	14
UGR transversal	14
X=4H   Y=8H	S=0.25H
Reflection factor	70/50/20

### OPTICAL

C0/C180 optics	12°
Light distribution symmetry	Symmetrical



Distance [m]	Cone diameter [m]	illuminance [lx]
0.5	0.11 0.11	E(0°) 37890 E(C90) 6.3° 18819 E(C0) 6.2° 18836
1.0	0.22 0.22	E(0°) 9472 E(C90) 6.3° 4705 E(C0) 6.2° 4709
1.5	0.33 0.33	E(0°) 4210 E(C90) 6.3° 2091 E(C0) 6.2° 2093
2.0	0.44 0.43	E(0°) 2368 E(C90) 6.3° 1176 E(C0) 6.2° 1177
2.5	0.55 0.54	E(0°) 1516 E(C90) 6.3° 753 E(C0) 6.2° 753
3.0	0.66 0.65	E(0°) 1052 E(C90) 6.3° 523 E(C0) 6.2° 523

— C0/C180 (Half-peak divergence: 12.4°)  
— C90/C270 (Half-peak divergence: 12.6°)

### COLOR VECTOR GRAPHIC

