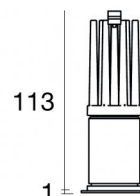




Downlights | 1 arrayLED 6.3 W DC 700 mA | CRI 90
C00048AUNFL



Ø42



35

Technical data	
Type	Encasement with flange
Installation position	Ceiling
Installation environment	Indoor
Light Source	LED
Circuit structure	arrayLED
Optics	Flood
Light emission direction	downward
Nominal power	6.3 W DC
Source lumens	805 lm
Input voltage range	700mA
CCT / Tone	4000 K
Colour rendering index	90 Ra
C.C. / C.V.	CC
Safety class	3
IP	IP44
Glow wire test	850°
Direct mounting on normally flammable surfaces	Yes
CE	Yes
Driver included	No
Dimmable article	DALI - 1-10V
Directional	No
Tilting	No
Walk-over	No
Drive-over	No
Cable included	Yes
Cable length	0.1 m
Resin potting	No
Type of light emission	Single emission
Net weight	0.11 Kg
Electrostatic discharge protection	No
Surge protection	No

Finishing casing

Material	Aluminium 6026
Colour	gold
Processing	Powder coating

Finishing diffuser

Material	UV Resistant Polycarbonate
Colour	transparent

Finishing radiator

Material	Die-cast Aluminium
Colour	Aluminium
Processing	Tumbling

Electronics



99147
On/Off Driver 198-264V AC (1 - 3 art.)



99735
Multi Power 198-264V AC / 180-275V DC (1 art.)



99733
1-10V Multi Power 198-264V AC / 180-275V DC (1 art.)



83323
Push and Simply Dim - DALI-2 Controller (1 art.)



C-E100016
Push and Simply Dim - DALI-2 Controller (1 - 3 art.)



Downlights | 1 arrayLED 6.3 W DC 700 mA | CRI 90 | Base
C00048AUNFL

Single emission recessed downlights for indoor application. The natural white LED light source with a flood light distribution is composed of 1 arrayed LEDs with CCT of 4000 K and a CRI 90; the source luminous flux is 805 lm, with a 127.8 lm/W nominal luminous efficacy.

The device body is made of aluminium 6026 and features a gold finish, processed by means of powder coating; the diffuser is made of uv resistant polycarbonate. The ingress protection degree is IP44; the total weight is of 0.11 kg. The power supply driver is not provided and is to be ordered separately.

The total absorbed power is 6.3 W. The power supply cable is included and features a 0.1 m length.

The device features protection class III and can be ceiling-mounted, with a 35 mm diameter hole (in plasterboard).

Compliant with the EN 60598-1 standard and its specific provisions.

Energy efficiency class

This product contains a light source of energy efficiency class F.

Illuminotechnical Features

Light Output Ratio (LOR)	51 %
Source lumens	805 lm
Delivered lumens	411 lm
Consumption	6.5 W
Luminaire efficacy	63 lm/W
Colour temperature	4000 K
Standard Deviation of Colour Matching	3 Step MacAdam
Colour rendering index	90 Ra
Standard Operating Ambient Temperature	-20 / +50°C

LED Life / Failure Ratio

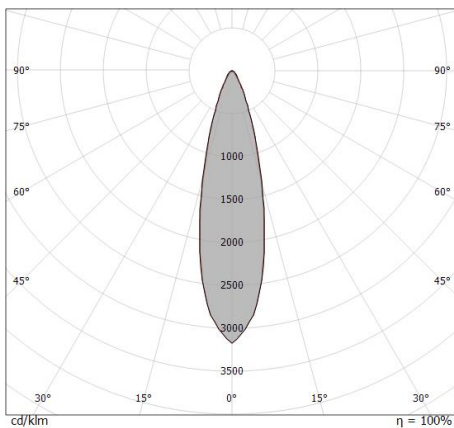
L70 B10 C0 134020h (at Tj 65 Ta 25)

UGR

UGR axial	22.6
UGR transversal	22.6
X=4H Y=8H	S=0.25H
Reflection factor	70/50/20

OPTICAL

C0/C180 optics	26°
Light distribution simmetry	Symmetrical



Distance [m]	Cone diameter [m]	Half-peak divergence [°]	E(0°) [lx]	E(C90) [lx]	E(C0) [lx]
0.5	0.24 0.23	26.4° 26.6°	5211	2425	2414
1.0	0.47 0.47	26.4° 26.6°	1303	606	604
1.5	0.71 0.70	26.4° 26.6°	579	269	268
2.0	0.95 0.94	26.4° 26.6°	326	152	151
2.5	1.18 1.17	26.4° 26.6°	208	97	97
3.0	1.42 1.41	26.4° 26.6°	145	67	67

Distance [m] Cone diameter [m] Illuminance [lx]

— C0/C180 (Half-peak divergence: 26.4°)
— C90/C270 (Half-peak divergence: 26.6°)