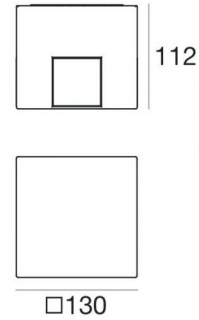




Wall Lights | 198-264 V
12 x powerLEDs 23 W DC - 25 W AC | CRI 80
97357M05



Technical data	
Type	Surface - -
Installation position	Wall lights
Installation environment	Outdoor
Light Source	LED
Circuit structure	powerLEDs
Optics	Ultra Spot
Light emission direction	external
Nominal power	23 W DC
Total Power	25 W
Source lumens	2628 lm
Nominal input voltage	220 - 240 V AC
Input voltage range	198 - 264 V AC
Frequency	50 - 60 Hz
CCT / Tone	2700 K
Colour rendering index	80 Ra
C.C. / C.V.	AC
Safety class	1
IP	IP66
IK	IK05
Glow wire test	850°
Direct mounting on normally flammable surfaces	Yes
CE	Yes
Driver included	Driver
Dimmable article	No
Directional	No
Tilting	No
Walk-over	No
Drive-over	No
Cable included	No
Resin potting	No
Type of light emission	Multiple emission
Net weight	1.6 Kg
Electrostatic discharge protection	Yes
Surge protection	4 KV
Product technological characteristics	TVS

Finishing casing

Material	Die-cast Aluminium EN AB - 46100
Colour	Dark brown
Processing	Open pore anodizing + Powder Coating

Finishing diffuser

Material	Extra clear glass
Colour	transparent
Processing	Silk-screening

Finishing radiator

Material	Die-cast Aluminium EN AB - 46100
Colour	Black
Processing	Open pore anodizing + Powder Coating

Wall Lights | 198-264 V | 12 x powerLEDs 23 W DC - 25 W AC | CRI 80 | Base
97357M05

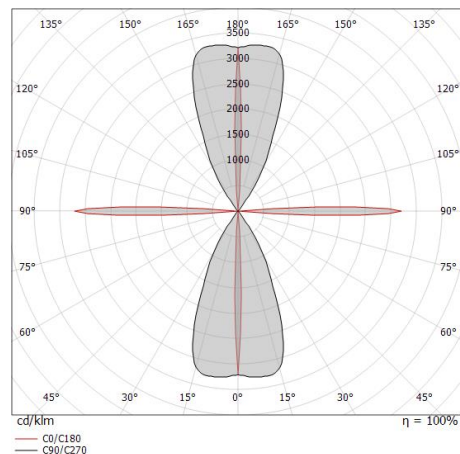
Multiple emission wall lights for outdoor application. The super warm white LED light source with a ultra spot light distribution is composed of 12 powered LEDs with CCT of 2700 K and a CRI 80; the source luminous flux is 2628 lm, with a 114.3 lm/W nominal luminous efficacy.

The device body is made of die-cast aluminium en ab - 46100 and features a dark brown finish, processed by means of open pore anodizing + powder coating; the diffuser is made of extra clear glass with a silk-screening treatment. The ingress protection degree is IP66; the total weight is of 1.6 kg.

The total absorbed power is 25 W.

The device features protection class I and can be wall lights-mounted.

Compliant with the EN 60598-1 standard and its specific provisions.



Energy efficiency class

This product contains 4 light sources of energy efficiency class D.

Illuminotechnical Features

Light Output Ratio (LOR)	13 %
Source lumens	2628 lm
Delivered lumens	364 lm
Consumption	25 W
Luminaire efficacy	14 lm/W
Colour temperature	2700 K
Standard Deviation of Colour Matching	1.5 Step
Colour rendering index	80 Ra
Standard Operating Ambient Temperature	-20 / +50°C
Ordinary temperature on the glass	40°C

LED Life / Failure Ratio

L70 B10 C0 361980h (at Tj 60 Ta 25)

OPTICAL

C90/C270 optics	50°
C0/C180 optics	180°
Light distribution simmetry	Symmetrical 2 assis