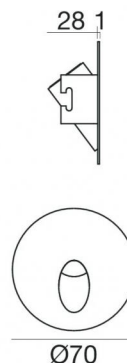




Wall Lights | 1 x powerLED 2 W DC 630 mA | CRI 80
92671W70




52


Technical data	
Type	Encasement with flange - -
Installation position	Wall lights
Installation environment	Outdoor
Light Source	LED
Circuit structure	powerLED
Optics	Asymmetric Wallwasher
Light emission direction	downward
Nominal power	2 W DC
Source lumens	249 lm
Input voltage range	630mA
CCT / Tone	3000 K
Colour rendering index	80 Ra
C.C. / C.V.	CC
Safety class	3
IP	IP65
IK	IK10
Glow wire test	850°
Direct mounting on normally flammable surfaces	Yes
CE	Yes
Driver included	No
Dimmable article	DALI - 1-10V
Directional	No
Tilting	No
Walk-over	No
Drive-over	No
Cable included	Yes
Cable length	1 m
Resin potting	Yes
Type of light emission	Single emission
Net weight	0.391 Kg
Electrostatic discharge protection	No
Surge protection	No


Finishing casing

Material	Stainless steel 316
Colour	steel
Processing	Brushing

Electronics

 89420
 On/Off Driver 198~264V AC / 176~275V DC (1 - 2 art.)

 99186
 On/Off Driver 198~264V AC (1 - 12 art.)

 C-E200008
 On/Off Driver 198~264V AC / 180~275V DC (1 - 6 art.)



Wall Lights | 1 x powerLED 2 W DC 630 mA | CRI 80 | Base 92671W70

Single emission wall lights for outdoor application. The warm white LED light source with a asymmetric wallwasher light distribution is composed of 1 powered LEDs with CCT of 3000 K and a CRI 80; the source luminous flux is 249 lm, with a 124.5 lm/W nominal luminous efficacy.

The device body is made of stainless steel and features a steel finish, processed by means of brushing. The ingress protection degree is IP65; the total weight is of 0.391 kg. The power supply driver is not provided and is to be ordered separately.

The total absorbed power is 2 W. The power supply cable is included and features a 1 m length.

The device features protection class III and can be wall lights-mounted, with a 52 mm diameter hole (in plasterboard) with an outer casing, code 84338(for concrete or masonry).

Compliant with the EN 60598-1 standard and its specific provisions.

Energy efficiency class

This product contains a light source of energy efficiency class D.

Illuminotechnical Features

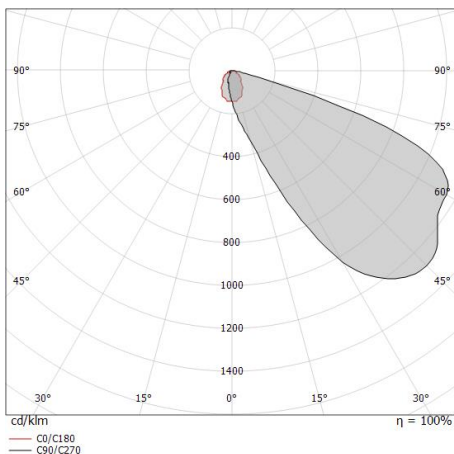
Light Output Ratio (LOR)	34 %
Source lumens	249 lm
Delivered lumens	85 lm
Consumption	2,0 W
Luminaire efficacy	42 lm/W
Colour temperature	3000 K
Standard Deviation of Colour Matching	1.5 Step
Colour rendering index	80 Ra
Standard Operating Ambient Temperature	-20 / +50°C
Ordinary temperature on the glass	40°C

LED Life / Failure Ratio

L70 B10 C0 361980h (at Tj 60 Ta 25)

OPTICAL

C0/C180 optics	74°
Light distribution simmetry	Asymmetrical



Distance [m]	Cone diameter [m]	Illuminance [lx]
0.5	0.75	$E(0^\circ)$ 48 $E(C0)$ 13
1.0	1.50	$E(0^\circ)$ 12 $E(C0)$ 3
1.5	2.25	$E(0^\circ)$ 5 $E(C0)$ 1
2.0	3.00	$E(0^\circ)$ 3 $E(C0)$ 1
2.5	3.75	$E(0^\circ)$ 2 $E(C0)$ 1
3.0	4.50	$E(0^\circ)$ 1 $E(C0)$ 0

— C0/C180 (Half-peak divergence: 73.8°)



Outer casing

installation position: wall lights; type of installation: masonry L=72mm, H=62mm, D=62mm.

Material:ABS Plastic, colour:black.

Code

84338