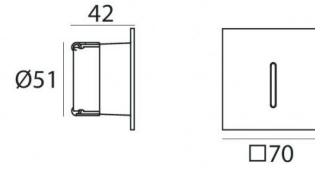




Wall Lights | 1 x powerLED 2 W DC 630 mA | CRI 80
92559N05



52

Technical data	
Type	Encasement with flange - -
Installation position	Wall lights
Installation environment	Outdoor
Light Source	LED
Circuit structure	powerLED
Optics	Ultra Spot
Light emission direction	downward
Nominal power	2 W DC
Source lumens	266 lm
Input voltage range	630mA
CCT / Tone	4000 K
Colour rendering index	80 Ra
C.C. / C.V.	CC
Safety class	3
IP	IP65
Glow wire test	850°
Direct mounting on normally flammable surfaces	Yes
CE	Yes
Driver included	No
Dimmable article	DALI - 1-10V
Directional	No
Tilting	No
Walk-over	No
Drive-over	No
Cable included	Yes
Cable length	1 m
Resin potting	Yes
Type of light emission	Single emission
Net weight	0.150 Kg
Electrostatic discharge protection	No
Surge protection	No
Product technological characteristics	Acquastop - TVS


Finishing casing


Material	Aluminium 6026
Colour	Grey
Processing	Open pore anodizing + Powder Coating


Finishing diffuser

Material	Extra clear glass
Colour	transparent

Electronics

 89420
 On/Off Driver 198~264V AC / 176~275V DC (1 - 2 art.)

 99186
 On/Off Driver 198~264V AC (6 - 12 art.)

 C-E200008
 On/Off Driver 198~264V AC / 180~275V DC (3 - 6 art.)



Wall Lights | 1 x powerLED 2 W DC 630 mA | CRI 80 | Base 92559N05

Single emission wall lights for outdoor application. The natural white LED light source with a ultra spot light distribution is composed of 1 powered LEDs with CCT of 4000 K and a CRI 80; the source luminous flux is 266 lm, with a 133.0 lm/W nominal luminous efficacy.

The device body is made of aluminium 6026 and features a grey finish, processed by means of open pore anodizing + powder coating; the diffuser is made of extra clear glass. The ingress protection degree is IP65; the total weight is of 0.150 kg. The power supply driver is not provided and is to be ordered separately.

The total absorbed power is 2 W. The power supply cable is included and features a 1 m length.

The device features protection class III and can be wall lights-mounted, with a 52 mm diameter hole (in plasterboard) with an outer casing, code 84338(for concrete or masonry).

Compliant with the EN 60598-1 standard and its specific provisions.

Energy efficiency class

This product contains a light source of energy efficiency class D.

Illuminotechnical Features

Light Output Ratio (LOR)	11 %
Source lumens	266 lm
Delivered lumens	30 lm
Consumption	2,0 W
Luminaire efficacy	15 lm/W
Colour temperature	4000 K
Standard Deviation of Colour Matching	1.5 Step
Colour rendering index	80 Ra

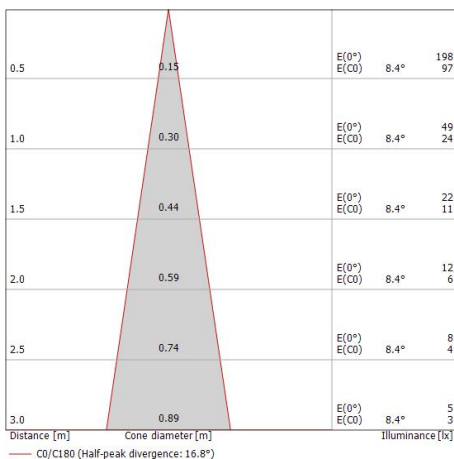
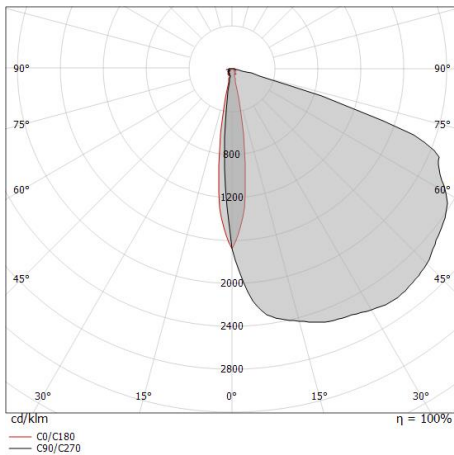
Standard Operating Ambient Temperature	-20 / +50°C
Ordinary temperature on the glass	40°C

LED Life / Failure Ratio

L70 B10 C0 361980h (at Tj 60 Ta 25)

OPTICAL

C0/C180 optics	17°
Light distribution symmetry	Asymmetrical





Cut_Q | Step Lights | Accessories
92559N05



Outer casing

installation position: wall lights; type of installation: masonry L=72mm, H=62mm, D=62mm.

Material:ABS Plastic, colour:black.

Code

84338