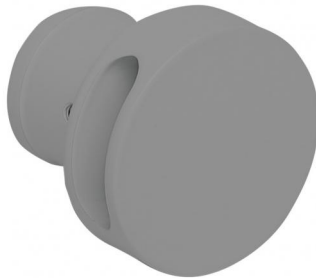
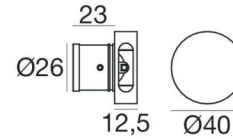




Wall Lights | 2 x powerLED 2 W DC 350 mA | CRI 80  
**92282C70**



29



Technical data	
Type	Semi-recessed - -
Installation position	Wall lights
Installation environment	Outdoor
Light Source	LED
Optics	Double Wide Flood
Light emission direction	downward and upward
Nominal power	2 W DC
Source lumens	330 lm
Input voltage range	350mA
CCT / Tone	5000 K
Colour rendering index	80 Ra
C.C. / C.V.	CC
Safety class	3
IP	IP66
Glow wire test	850°
Direct mounting on normally flammable surfaces	Yes
CE	Yes
Driver included	No
Dimmable article	DALI - 1-10V
Directional	No
Tilting	No
Walk-over	No
Drive-over	No
Cable included	Yes
Cable length	1 m
Resin potting	Yes
Type of light emission	Double emission
Net weight	0.108 Kg
Electrostatic discharge protection	No
Surge protection	No

### Finishing casing

Material	Aluminium
Colour	Grey
Processing	Coating

### Electronics



89421  
 On/Off Driver 198~264V AC / 176~275V DC (1 - 3 art.)



89419  
 On/Off Driver 198~264V AC / 176~275V DC (1 art.)



C-E200006  
 On/Off Driver 198~264V AC / 180~275V DC (1 - 6 art.)

## Wall Lights | 2 x powerLED 2 W DC 350 mA | CRI 80 | Base 92282C70

Double emission wall lights for outdoor application. The cold white LED light source with a double wide flood light distribution is composed of 2 powerLEDs with CCT of 5000 K and a CRI 80; the source luminous flux is 330 lm, with a 165.0 lm/W nominal luminous efficacy.

The device body is made of aluminium and features a grey finish, processed by means of coating. The ingress protection degree is IP66; the total weight is of 0.108 kg. The power supply driver is not provided and is to be ordered separately.

The total absorbed power is 2 W. The power supply cable is included and features a 1 m length.

The device features protection class III and can be wall lights-mounted, with a 29 mm diameter hole (in plasterboard) with an outer casing, code 84915(for concrete or masonry).

Compliant with the EN 60598-1 standard and its specific provisions.

### Energy efficiency class

This product contains 2 light sources of energy efficiency class D.

### Illuminotechnical Features

Light Output Ratio (LOR)	49 %
Source lumens	330 lm
Delivered lumens	164 lm
Consumption	2,0 W
Luminaire efficacy	82 lm/W
Colour temperature	5000 K
Standard Deviation of Colour Matching	1/16 ANSI BIN
Colour rendering index	80 Ra

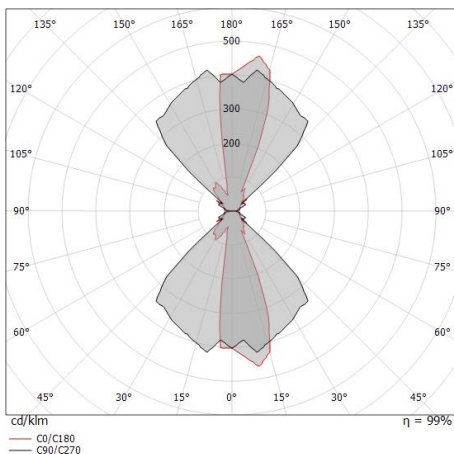
Standard Operating Ambient Temperature	-20 / +50°C
Ordinary temperature on the glass	40°C

### LED Life / Failure Ratio

L70 B10 C0 361980h (at Tj 60 Ta 25 )

### OPTICAL

C90/C270 optics	92°
Light distribution symmetry	Asymmetrical





Outer casing

installation position: ceiling; type of installation: masonry L=42mm, H=35mm, D=35mm.

Material:ABS Plastic, colour:black.

**Code**

84336



Outer casing

installation position: wall lights; type of installation: masonry L=49mm, H=60mm, D=60mm.

Material:ABS Plastic, colour:black.

**Code**

84915