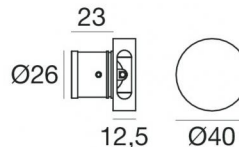
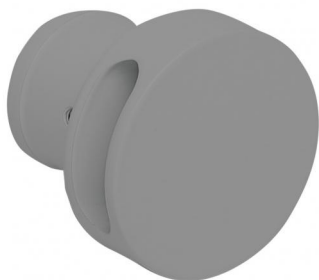




Wall Lights | 1 x powerLED 2 W DC 630 mA | CRI 80
92272N70



29



Technical data	
Type	Semi-recessed - -
Installation position	Wall lights
Installation environment	Outdoor
Light Source	LED
Circuit structure	powerLED
Optics	Wide Flood
Light emission direction	downward
Nominal power	2 W DC
Source lumens	266 lm
Input voltage range	630mA
CCT / Tone	4000 K
Colour rendering index	80 Ra
C.C. / C.V.	CC
Safety class	3
IP	IP66
Glow wire test	850°
Direct mounting on normally flammable surfaces	Yes
CE	Yes
Driver included	No
Dimmable article	DALI - 1-10V
Directional	No
Tilting	No
Walk-over	No
Drive-over	No
Cable included	Yes
Cable length	1 m
Resin potting	Yes
Type of light emission	Single emission
Net weight	0.127 Kg
Electrostatic discharge protection	No
Surge protection	No

Finishing casing	
Material	Aluminium
Colour	Grey
Processing	Coating

Electronics



89420
 On/Off Driver 198~264V AC / 176~275V DC (1 - 2 art.)



99186
 On/Off Driver 198~264V AC (1 - 12 art.)



C-E200008
 On/Off Driver 198~264V AC / 180~275V DC (1 - 6 art.)

Wall Lights | 1 x powerLED 2 W DC 630 mA | CRI 80 | Base 92272N70

Single emission wall lights for outdoor application. The natural white LED light source with a wide flood light distribution is composed of 1 powered LED with CCT of 4000 K and a CRI 80; the source luminous flux is 266 lm, with a 133.0 lm/W nominal luminous efficacy.

The device body is made of aluminium and features a grey finish, processed by means of coating. The ingress protection degree is IP66; the total weight is of 0.127 kg. The power supply driver is not provided and is to be ordered separately.

The total absorbed power is 2 W. The power supply cable is included and features a 1 m length.

The device features protection class III and can be wall lights-mounted, with a 29 mm diameter hole (in plasterboard) with an outer casing, code 84915(for concrete or masonry).

Compliant with the EN 60598-1 standard and its specific provisions.

Energy efficiency class

This product contains a light source of energy efficiency class D.

Illuminotechnical Features

Light Output Ratio (LOR)	43 %
Source lumens	266 lm
Delivered lumens	115 lm
Consumption	2,0 W
Luminaire efficacy	57 lm/W
Colour temperature	4000 K
Standard Deviation of Colour Matching	1.5 Step
Colour rendering index	80 Ra

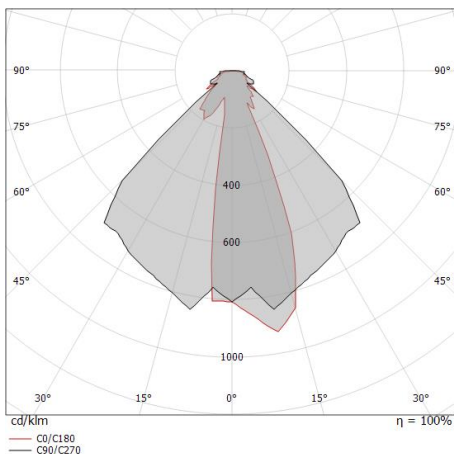
Standard Operating Ambient Temperature -20 / +50°C

LED Life / Failure Ratio

L70 B10 C0 361980h (at Tj 60 Ta 25)

OPTICAL

C90/C270 optics	92°
Light distribution symmetry	Asymmetrical





Outer casing

installation position: ceiling; type of installation: masonry L=42mm, H=35mm, D=35mm.

Material:ABS Plastic, colour:black.

Code

84336



Outer casing

installation position: wall lights; type of installation: masonry L=49mm, H=60mm, D=60mm.

Material:ABS Plastic, colour:black.

Code

84915