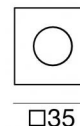




Uplights | 1 x powerLED 1 W DC 350 mA | CRI 80
92069M30



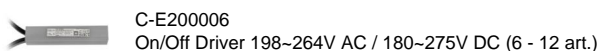
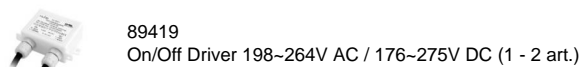
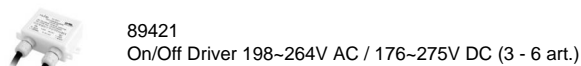
Technical data

Type	Frame
Installation position	Floor
Installation environment	Outdoor
Light Source	LED
Circuit structure	powerLED
Optics	Flood
Light emission direction	upward
Nominal power	1 W DC
Source lumens	145 lm
Input voltage range	350mA
CCT / Tone	2700 K
Colour rendering index	80 Ra
C.C. / C.V.	CC
Safety class	3
IP	IP66
IK	IK05
Glow wire test	850°
Direct mounting on normally flammable surfaces	Yes
CE	Yes
Driver included	No
Dimmable article	DALI - 1-10V
Directional	No
Tilting	No
Walk-over	Yes
Drive-over	No
Cable included	Yes
Cable length	1 m
Resin potting	Yes
Type of light emission	Single emission
Net weight	0.066 Kg
Electrostatic discharge protection	No
Surge protection	No

Finishing casing

Material	Brass
Colour	chrome
Processing	Electroplating

Electronics





Uplights | 1 x powerLED 1 W DC 350 mA | CRI 80 | Base 92069M30

Single emission uplights for outdoor application. The super warm white LED light source with a flood light distribution is composed of 1 poweredLEDs with CCT of 2700 K and a CRI 80; the source luminous flux is 145 lm, with a 145.0 lm/W nominal luminous efficacy.

The device body is made of brass and features a chrome finish, processed by means of electroplating. The ingress protection degree is IP66; the total weight is of 0.066 kg. The power supply driver is not provided and is to be ordered separately.

The total absorbed power is 1 W. The power supply cable is included and features a 1 m length.

The device features protection class III and can be floor-mounted, with a 29 mm diameter hole (in plasterboard) with an outer casing, code 84915(for concrete or masonry).

Compliant with the EN 60598-1 standard and its specific provisions.

Energy efficiency class

This product contains a light source of energy efficiency class D.

Illuminotechnical Features

Light Output Ratio (LOR)	57 %
Source lumens	145 lm
Delivered lumens	83 lm
Consumption	1,0 W
Luminaire efficacy	83 lm/W
Colour temperature	2700 K
Standard Deviation of Colour Matching	1.5 Step
Colour rendering index	80 Ra
Standard Operating Ambient Temperature	-20 / +50°C
Ordinary temperature on the glass	40°C

LED Life / Failure Ratio

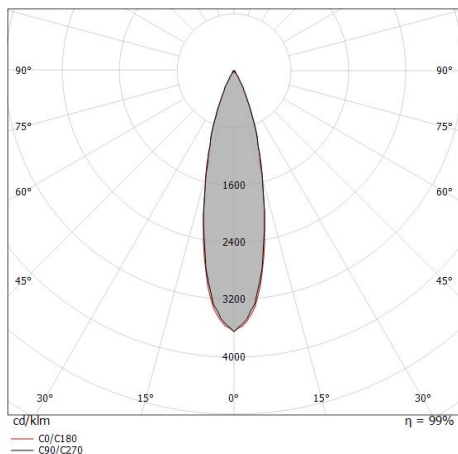
L70 B10 C0 361980h (at Tj 60 Ta 25)

UGR

UGR axial	18.6
UGR transversal	18.1
X=4H Y=8H	S=0.25H
Reflection factor	70/50/20

OPTICAL

C0/C180 optics	26°
Light distribution simmetry	Symmetrical



Distance [m]	Cone diameter [m]	Illuminance [lx]
0.5	0.23	E(0°) 1201 E(C90) 556 E(C0) 555
1.0	0.47	E(0°) 300 E(C90) 139 E(C0) 139
1.5	0.70	E(0°) 133 E(C90) 62 E(C0) 62
2.0	0.93	E(0°) 75 E(C90) 35 E(C0) 35
2.5	1.16	E(0°) 48 E(C90) 22 E(C0) 22
3.0	1.40	E(0°) 33 E(C90) 15 E(C0) 15

Distance [m] Cone diameter [m] Illuminance [lx]

— C0/C180 (Half-peak divergence: 26.4°)
— C90/C270 (Half-peak divergence: 26.2°)



Beret_Q | Uplights | Accessories
92069M30



Outer casing

installation position: wall lights; type of installation: masonry L=49mm, H=60mm, D=60mm.

Material:ABS Plastic, colour:black.

Code

84915



Outer casing

installation position: ceiling; type of installation: masonry L=42mm, H=35mm, D=35mm.

Material:ABS Plastic, colour:black.

Code

84336