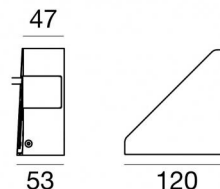
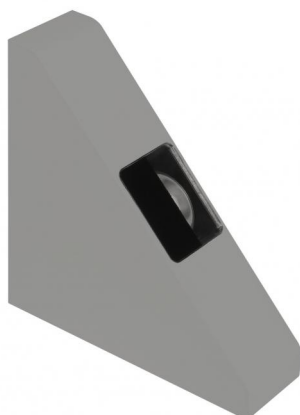




Wall Lights | 198-264 V AC /186-275 V DC
1 x powerLED 8.4 W DC - 10.5 W AC | CRI 80
91598W90



Technical data	
Designer	OKAPI
Type	Surface - -
Installation position	Wall lights
Installation environment	Outdoor
Light Source	LED
Circuit structure	powerLED
Optics	90°
Light emission direction	external
Nominal power	8.4 W DC
Total Power	10.5 W
Source lumens	854 lm
Nominal input voltage	220 - 240 V AC
Input voltage range	198 - 264 V AC
Frequency	50 - 60 Hz
CCT / Tone	3000 K
Colour rendering index	80 Ra
C.C. / C.V.	AC
Safety class	1
IP	IP65
IK	IK05
Glow wire test	850°
Direct mounting on normally flammable surfaces	Yes
CE	Yes
Driver included	Driver
Dimmable article	No
Directional	No
Tilting	No
Walk-over	No
Drive-over	No
Cable included	Yes
Cable length	1 m
Resin potting	No
Type of light emission	Diffusion at right angle
Net weight	0.746 Kg
Electrostatic discharge protection	Yes
Surge protection	2 KV
Product technological characteristics	TCS - TVS

Finishing casing

Material	Die-cast Aluminium EN AB - 46100
Colour	Grey
Processing	Open pore anodizing + Powder Coating

Finishing diffuser

Material	Extra clear glass - Tempered
Colour	transparent
Processing	Silk-screening

Cables Electrification

Cable connector	No
-----------------	----

The driver contained in the device complies with IEC 61347-2-13 annex J, and can therefore be powered by centralized power systems.

Wall Lights | 198-264 V AC /186-275 V DC | 1 x powerLED 8.4 W DC - 10.5 W AC | CRI 80 |
 Base
91598W90

Diffusion at right angle wall lights for outdoor application. The warm white LED light source is composed of 1 powerled LEDs with CCT of 3000 K and a CRI 80; the source luminous flux is 854 lm, with a 101.7 lm/W nominal luminous efficacy.

The device body is made of die-cast aluminium en ab - 46100 and features a grey finish, processed by means of open pore anodizing + powder coating; the diffuser is made of extra clear glass - tempered with a silk-screening treatment. The ingress protection degree is IP65; the total weight is of 0.746 kg.

The total absorbed power is 10.5 W. The power supply cable is included and features a 1 m length.

The device features protection class I and can be wall lights-mounted.

Compliant with the EN 60598-1 standard and its specific provisions.

Energy efficiency class

This product contains a light source of energy efficiency class E.

Illuminotechnical Features

Light Output Ratio (LOR)	36 %
Source lumens	854 lm
Delivered lumens	311 lm
Consumption	10.5 W
Luminaire efficacy	29 lm/W
Colour temperature	3000 K
Standard Deviation of Colour Matching	3 Step MacAdam
Colour rendering index	80 Ra

Standard Operating Ambient Temperature -20 / +50°C

Ordinary temperature on the glass 35°C

LED Life / Failure Ratio

L70 B10 C0 247450h (at Tj 60 Ta 25)

