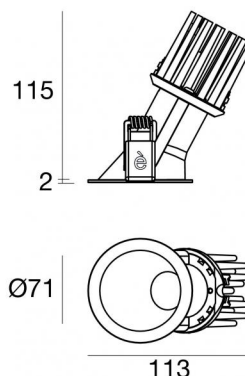




Downlights | 1 x powerLED 10 W DC 800 mA | CRI 92  
**90846M60**



64

| Technical data                                 |                        |
|--|------------------------|
| Type   | Encasement with flange |
| Installation position                          | Ceiling                |
| Installation environment                       | Indoor                 |
| Light Source                                   | LED                    |
| Circuit structure                              | powerLED               |
| Optics   | 60°                    |
| Light emission direction                       | downward               |
| Nominal power                                  | 10 W DC                |
| Source lumens                                  | 960 lm                 |
| Input voltage range                            | 800mA                  |
| CCT / Tone                                     | 2700 K                 |
| Colour rendering index                         | 92 Ra                  |
| C.C. / C.V.                                    | CC                     |
| Safety class                                   | 3                      |
| IP   | IP44                   |
| Optical compartment IP                         | IP65                   |
| Glow wire test                                 | 850°                   |
| Direct mounting on normally flammable surfaces | Yes                    |
| CE   | Yes                    |
| Driver included                                | No                     |
| Dimmable article                               | DALI - 1-10V           |
| Directional                                    | No                     |
| Tilting  | No                     |
| Walk-over                                      | No                     |
| Drive-over                                     | No                     |
| Cable included                                 | No                     |
| Resin potting                                  | No                     |
| Type of light emission                         | Single emission        |
| Net weight                                     | 0.250 Kg               |
| Electrostatic discharge protection             | No                     |
| Surge protection                               | No                     |
| Optics technology                              | F.O.L.                 |
| Product technological characteristics          | TVS                    |

### Finishing casing

|            |                                  |
|------------|----------------------------------|
| Material   | Die-cast Aluminium EN AB - 46100 |
| Colour     | White                            |
| Processing | Powder coating                   |

### Finishing diffuser

|          |                            |
|----------|----------------------------|
| Material | UV Resistant Polycarbonate |
| Colour   | transparent                |

### Finishing radiator

|            |                                  |
|------------|----------------------------------|
| Material   | Die-cast Aluminium EN AB - 46100 |
| Processing | Tumbling                         |

### Electronics



99135  
On/Off Driver 198~264V AC



99345  
DALI - Push and Simply Dim Multi Power 198~264V AC / 176~275V DC



99735  
Multi Power 198~264V AC / 180~275V DC



99733  
1-10V Multi Power 198~264V AC / 180~275V DC



C-E100013  
Push and Simply Dim - DALI-2 Controller



Downlights | 1 x powerLED 10 W DC 800 mA | CRI 92 | Base  
**90846M60**

Single emission recessed downlights for indoor application. The super warm white LED light source is composed of 1 powered LEDs with CCT of 2700 K and a CRI 92; the source luminous flux is 960 lm, with a 96.0 lm/W nominal luminous efficacy.

The device body is made of die-cast aluminium en ab - 46100 and features a white finish, processed by means of powder coating; the diffuser is made of uv resistant polycarbonate. The ingress protection degree is IP44; the total weight is of 0.250 kg. The power supply driver is not provided and is to be ordered separately.

The total absorbed power is 10 W.

The device features protection class III and can be ceiling-mounted, with a 64 mm diameter hole (in plasterboard).

Compliant with the EN 60598-1 standard and its specific provisions.

### Energy efficiency class

This product contains a light source of energy efficiency class F.

### Illuminotechnical Features

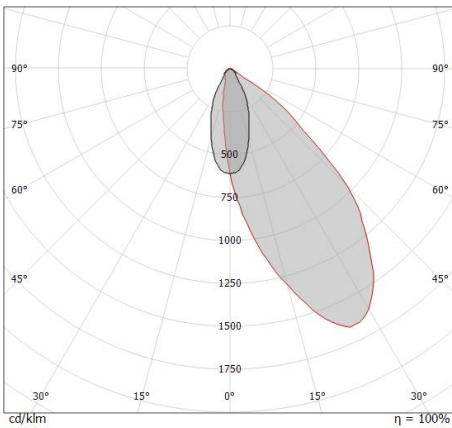
|  |                |
|--|----------------|
| Light Output Ratio (LOR)               | 61 %           |
| Source lumens                          | 960 lm         |
| Delivered lumens                       | 590 lm         |
| Consumption                            | 10 W           |
| Luminaire efficacy                     | 59 lm/W        |
| Colour temperature                     | 2700 K         |
| Standard Deviation of Colour Matching  | 2 Step MacAdam |
| Colour rendering index                 | 92 Ra          |
| Black Body Locus                       | On             |
| Standard Operating Ambient Temperature | -20 / +50°C    |
| Ordinary temperature on the glass      | 40°C           |

### LED Life / Failure Ratio

L70 B10 C0 247450h (at Tj 60 Ta 25 )

### OPTICAL

|                             |              |
|-----------------------------|--------------|
| C90/C270 optics             | 43°          |
| Light distribution simmetry | Asymmetrical |



| Distance [m] | Cone diameter [m] | Illuminance [lx]                 |
|--------------|-------------------|----------------------------------|
| 0.5          | 1.05              | E(0°)<br>E(C90) 46.5° 1439<br>36 |
| 1.0          | 2.11              | E(0°)<br>E(C90) 46.5° 360<br>9   |
| 1.5          | 3.16              | E(0°)<br>E(C90) 46.5° 160<br>4   |
| 2.0          | 4.22              | E(0°)<br>E(C90) 46.5° 90<br>2    |
| 2.5          | 5.27              | E(0°)<br>E(C90) 46.5° 58<br>1    |
| 3.0          | 6.32              | E(0°)<br>E(C90) 46.5° 40<br>1    |

Distance [m] Cone diameter [m] Illuminance [lx]  
— C90/C270 (Half-peak divergence: 93.0°)

