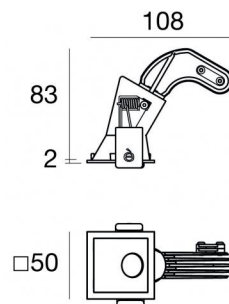
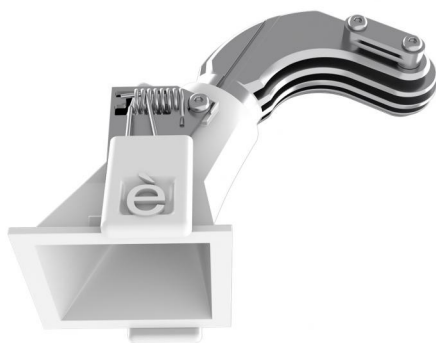




Downlights | 1 x powerLED 4 W DC 350 mA | CRI 90
90842N15



46

Technical data

| | |
|--|------------------------|
| Type | Encasement with flange |
| Installation position | Ceiling |
| Installation environment | Indoor |
| Light Source | LED |
| Circuit structure | powerLED |
| Optics | Spot |
| Light emission direction | downward |
| Nominal power | 4 W DC |
| Source lumens | 449 lm |
| Input voltage range | 350mA |
| CCT / Tone | 4000 K |
| Colour rendering index | 90 Ra |
| C.C. / C.V. | CC |
| Safety class | 3 |
| IP | IP44 |
| Optical compartment IP | IP65 |
| Glow wire test | 850° |
| Direct mounting on normally flammable surfaces | Yes |
| CE | Yes |
| Driver included | No |
| Dimmable article | DALI - 1-10V |
| Directional | No |
| Tilting | No |
| Walk-over | No |
| Drive-over | No |
| Cable included | Yes |
| Cable length | 0.170 m |
| Resin potting | No |
| Type of light emission | Single emission |
| Net weight | 0.078 Kg |
| Electrostatic discharge protection | No |
| Surge protection | No |
| Optics technology | F.O.L. - Honey comb |
| Product technological characteristics | TVS |

Finishing casing

| | |
|------------|----------------------------------|
| Material | Die-cast Aluminium EN AB - 46100 |
| Colour | White |
| Processing | Powder coating |


Finishing diffuser

| | |
|----------|----------------------------|
| Material | UV Resistant Polycarbonate |
| Colour | transparent |


Finishing radiator

| | |
|------------|----------------------------------|
| Material | Die-cast Aluminium EN AB - 46100 |
| Colour | Aluminium |
| Processing | Polishing |

Electronics

 89145
On/Off Driver 198-264V AC / 180-275V DC (1 art.)

 99375
On/Off Driver 198-264V AC (2 - 3 art.)

 C-E100010
1-10V - 0-10V Controller (1 art.)

 C-E100011
Push and Simply Dim - DALI-2 Controller (1 art.)

Cables Electrification

Cable connector No



Downlights | 1 x powerLED 4 W DC 350 mA | CRI 90 | Base 90842N15

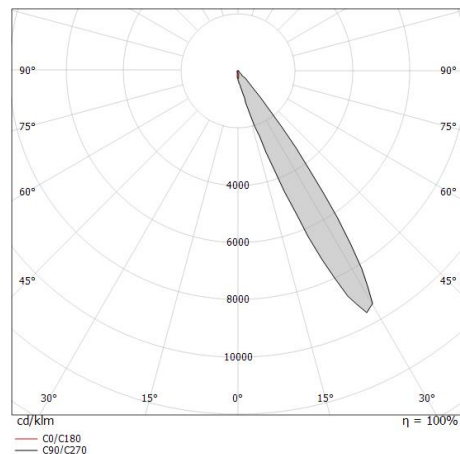
Single emission recessed downlights for indoor application. The natural white LED light source with a spot light distribution is composed of 1 powered LEDs with CCT of 4000 K and a CRI 90; the source luminous flux is 449 lm, with a 112.3 lm/W nominal luminous efficacy.

The device body is made of die-cast aluminium en ab - 46100 and features a white finish, processed by means of powder coating; the diffuser is made of uv resistant polycarbonate. The ingress protection degree is IP44; the total weight is of 0.078 kg. The power supply driver is not provided and is to be ordered separately.

The total absorbed power is 4 W. The power supply cable is included and features a 0.170 m length.

The device features protection class III and can be ceiling-mounted, with a 46 x 46 mm hole (in plasterboard).

Compliant with the EN 60598-1 standard and its specific provisions.



| | | | | |
|-----|------|----------------|-------|------------|
| 0.5 | 0.28 | E(0°) E(C0) | 15.6° | 264 118 |
| 1.0 | 0.56 | E(0°) E(C0) | 15.6° | 66 30 |
| 1.5 | 0.84 | E(0°) E(C0) | 15.6° | 29 13 |
| 2.0 | 1.12 | E(0°) E(C0) | 15.6° | 17 7 |
| 2.5 | 1.40 | E(0°) E(C0) | 15.6° | 11 5 |
| 3.0 | 1.68 | E(0°) E(C0) | 15.6° | 7 3 |

Distance [m] Cone diameter [m] Illuminance [lx]

— C0/C180 (Half-peak divergence: 31.2°)

Energy efficiency class

This product contains a light source of energy efficiency class F.

Illuminotechnical Features

| | |
|--|----------------|
| Light Output Ratio (LOR) | 51 % |
| Source lumens | 449 lm |
| Delivered lumens | 233 lm |
| Consumption | 4 W |
| Luminaire efficacy | 58 lm/W |
| Colour temperature | 4000 K |
| Standard Deviation of Colour Matching | 3 Step MacAdam |
| Colour rendering index | 90 Ra |
| Black Body Locus | On |
| Standard Operating Ambient Temperature | -20 / +50°C |
| Ordinary temperature on the glass | 40°C |

LED Life / Failure Ratio

L70 B10 C0 247450h (at Tj 60 Ta 25)

OPTICAL

| | |
|-----------------------------|--------------|
| C0/C180 optics | 31° |
| Light distribution simmetry | Asymmetrical |

