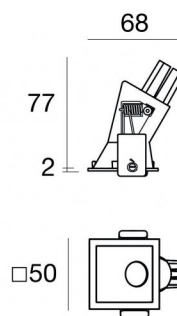
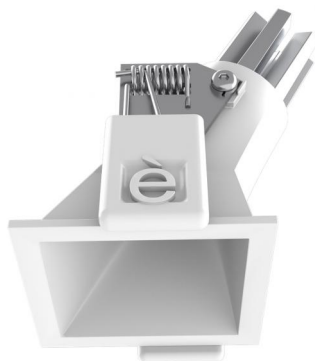




Downlights | 1 x powerLED 2 W DC 630 mA | CRI 90
90822W60



46

Technical data	
Type	Encasement with flange
Installation position	Ceiling
Installation environment	Indoor
Light Source	LED
Circuit structure	powerLED
Optics	60°
Light emission direction	downward
Nominal power	2 W DC
Source lumens	213 lm
Input voltage range	630mA
CCT / Tone	3000 K
Colour rendering index	90 Ra
C.C. / C.V.	CC
Safety class	3
IP	IP44
Optical compartment IP	IP65
Glow wire test	850°
Direct mounting on normally flammable surfaces	Yes
CE	Yes
Driver included	No
Dimmable article	DALI - 1-10V
Directional	No
Tilting	No
Walk-over	No
Drive-over	No
Cable included	Yes
Cable length	0.170 m
Resin potting	No
Type of light emission	Single emission
Net weight	0.047 Kg
Electrostatic discharge protection	No
Surge protection	No
Optics technology	F.O.L.
Product technological characteristics	TVS

Finishing casing

Material	Die-cast Aluminium EN AB - 46100
Colour	White
Processing	Powder coating


Finishing diffuser

Material	UV Resistant Polycarbonate
Colour	transparent


Finishing radiator

Material	Die-cast Aluminium EN AB - 46100
Processing	Tumbling

Electronics


 89147
On/Off Driver 198~264V AC / 180~275V DC (1 - 2 art.)

 99105
On/Off Driver 198~264V AC (1 - 12 art.)

 99374
On/Off Driver 198~264V AC / 176~275V DC 75 W (1 - 37 art.)

 99710
1-10V Converter 24V DC (1 art.)

 99713
DALI Converter 24V DC (1 art.)

 99376
On/Off Driver 198~264V AC (1 - 6 art.)

Cables Electrification

Cable connector	No
-----------------	----

Downlights | 1 x powerLED 2 W DC 630 mA | CRI 90 | Base 90822W60

Single emission recessed downlights for indoor application. The warm white LED light source is composed of 1 powerLEDs with CCT of 3000 K and a CRI 90; the source luminous flux is 213 lm, with a 106.5 lm/W nominal luminous efficacy.

The device body is made of die-cast aluminium en ab - 46100 and features a white finish, processed by means of powder coating; the diffuser is made of uv resistant polycarbonate. The ingress protection degree is IP44; the total weight is of 0.047 kg. The power supply driver is not provided and is to be ordered separately.

The total absorbed power is 2 W. The power supply cable is included and features a 0.170 m length.

The device features protection class III and can be ceiling-mounted, with a 46 x 46 mm hole (in plasterboard).

Compliant with the EN 60598-1 standard and its specific provisions.

Energy efficiency class

This product contains a light source of energy efficiency class F.

Illuminotechnical Features

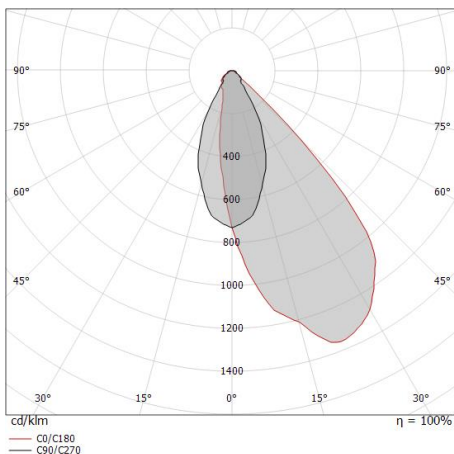
Light Output Ratio (LOR)	48 %
Source lumens	213 lm
Delivered lumens	104 lm
Consumption	2,0 W
Luminaire efficacy	52 lm/W
Colour temperature	3000 K
Standard Deviation of Colour Matching	3 Step MacAdam
Colour rendering index	90 Ra
Standard Operating Ambient Temperature	-20 / +50°C
Ordinary temperature on the glass	40°C

LED Life / Failure Ratio

L70 B20 C0 214455h (at Tj 60 Ta 25)

OPTICAL

C90/C270 optics	48°
Light distribution symmetry	Asymmetrical



Distance [m]	Cone diameter [m]	Illuminance [lx]
0.5	0.93	E(0°) 305 E(C90) 10
1.0	1.87	E(0°) 76 E(C90) 2
1.5	2.80	E(0°) 34 E(C90) 1
2.0	3.73	E(0°) 19 E(C90) 1
2.5	4.66	E(0°) 12 E(C90) 0
3.0	5.60	E(0°) 8 E(C90) 0

— C90/C270 (Half-peak divergence: 86.0°)